

March 15, 2024

Re: West Edge Subdivision  
Aberdeen, SD  
Helms A-8668

**ADDENDUM NUMBER 1**

The following modifications are made to the plans and specifications for the West Edge Subdivision, Aberdeen, SD.

**1.) Contract Documents, Section 00 42 43 – Bid Form. Modifications to Article 6 – Time of Completion. Remove and Replace with the following.**

**ARTICLE 6 - TIME OF COMPLETION**

Bidder agrees that all dirt work, geotextile separator fabric, geogrid, gravel base course, and curb & gutter and utility work (minus the sanitary sewer lift station and forcemain piping) of Phase 1 will be substantially complete on or before September 6, 2024. Bidder agrees that all utility work of Phase 2 and the sanitary sewer lift station & sewer forcemain piping work will be substantially complete on or before January 31, 2025. Bidder agrees that both lifts of asphalt concrete surfacing shall be substantially complete on Phase 1 by May 16, 2025. Bidder agrees that all remaining work will be substantially complete on or before August 8, 2025; and ready for final payment in accordance with Paragraph 14.07 of the General Conditions on or before August 29, 2025.

**2.) Contract Documents, Section 00 52 14 – Agreement Between Owner and Contractor for Construction Contract (Unit Price). Modifications to Article 4.02 – Contract Times: Dates. Remove and Replace with the following.**

**4.02 Contract Times: Dates**

A. All dirt work, geotextile separator fabric, geogrid, gravel base course, and curb & gutter and utility work (minus the sanitary sewer lift station and forcemain piping) of Phase 1 will be substantially complete on or before September 6, 2024. All utility work of Phase 2 and the sanitary sewer lift station & sewer forcemain piping work will be substantially complete on or before January 31, 2025. Both lifts of asphalt concrete surfacing shall be substantially complete on Phase 1 by May 16, 2025. All remaining work will be substantially complete on or before August 8, 2025; and ready for final payment in accordance with Paragraph 14.07 of the General Conditions on or before August 29, 2025.

**3.) Technical Specification; Section 31 34 20 – Geosynthetic Reinforcement. Revision to Section 1.05.B. Remove and Replace with the following.**

- B. The design of the pavement is based on a design traffic loading of 315,000 ESALs using the following parameters and based on the asphalt paving section as indicated in the construction plans:
  - i. Subgrade CBR Value: 3.0%
  - ii. Subgrade Modulus: 4,500 psi

**4.) Technical Specification; Section 33 32 13-13 Sanitary Sewer Duplex Submersible Pump Lift Station. Revisions to Section 2.14. Remove and Replace with the following.**

**2.14 SPARE PUMPS**

- A. One spare pump complete with all hardware for installing into wetwell on rail system provided, shall be supplied. The spare pump shall be identical to the ones supplied for the lift station.
- B. DELETED

**5.) Technical Specification; Section 33 42 00 Duplex Storm Water Submersible Pump Lift Stations. Revisions to Section 2.10. Remove and Replace with the following.**

**2.10 SPARE PUMPS**

- C. One spare pump complete with all hardware for installing into wetwell on rail system provided, shall be supplied. The spare pump shall be identical to the ones supplied for the lift station.

**6.) Construction Plan Sheets: Sheet 51 of 109. Curb and Gutter Detail Revision. Remove and replace with the attached.**

**7.) Construction Plan Sheets: Sheet 63 of 109. Construction Phasing Plan Revision. Remove and replace with the attached.**

ALL OTHER ITEMS OF THE PLANS AND SPECIFICATIONS REMAIN UNCHANGED.

BY: 

PROJECT ENGINEER - HELMS AND ASSOCIATES

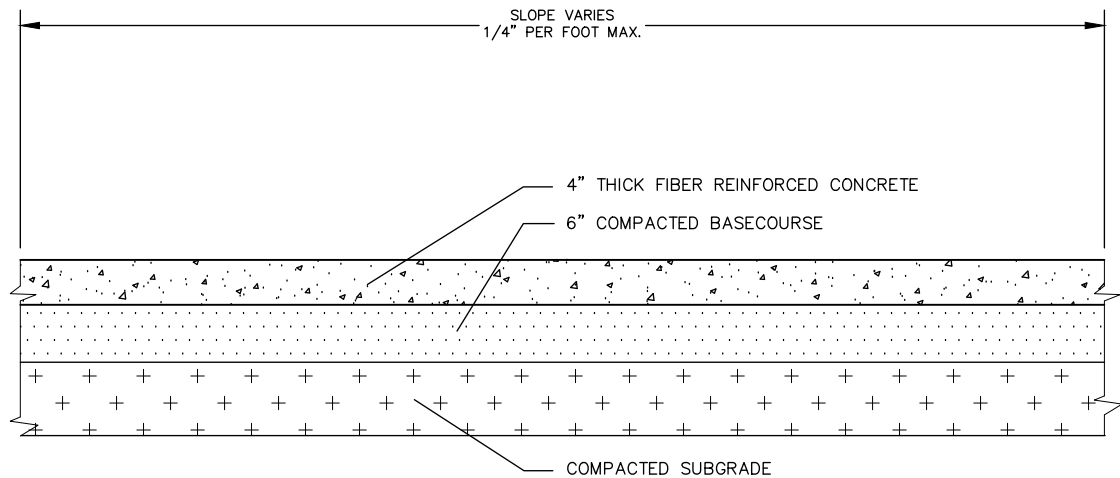


=====

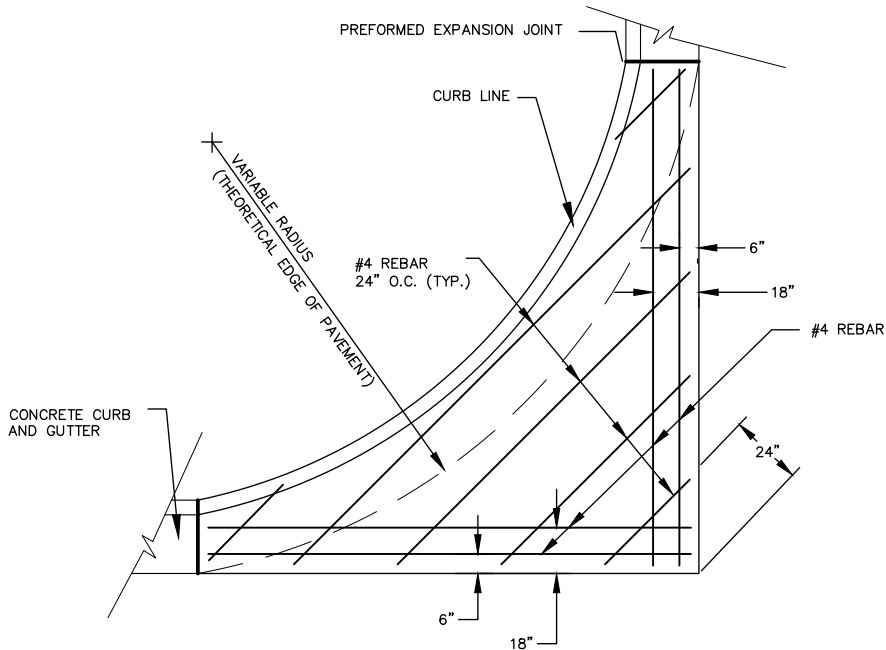
COMPANY NAME: \_\_\_\_\_ BY: \_\_\_\_\_

TITLE: \_\_\_\_\_ DATE: \_\_\_\_\_

ATTACH THIS SIGNED ADDENDUM NUMBER 1 TO THE BID FORM WHEN SUBMITTING  
AND/OR ACKNOWLEDGE THE ADDENDUM ON THE BID FORM.



CONCRETE CONCRETE SIDEWALK DETAIL  
NO SCALE



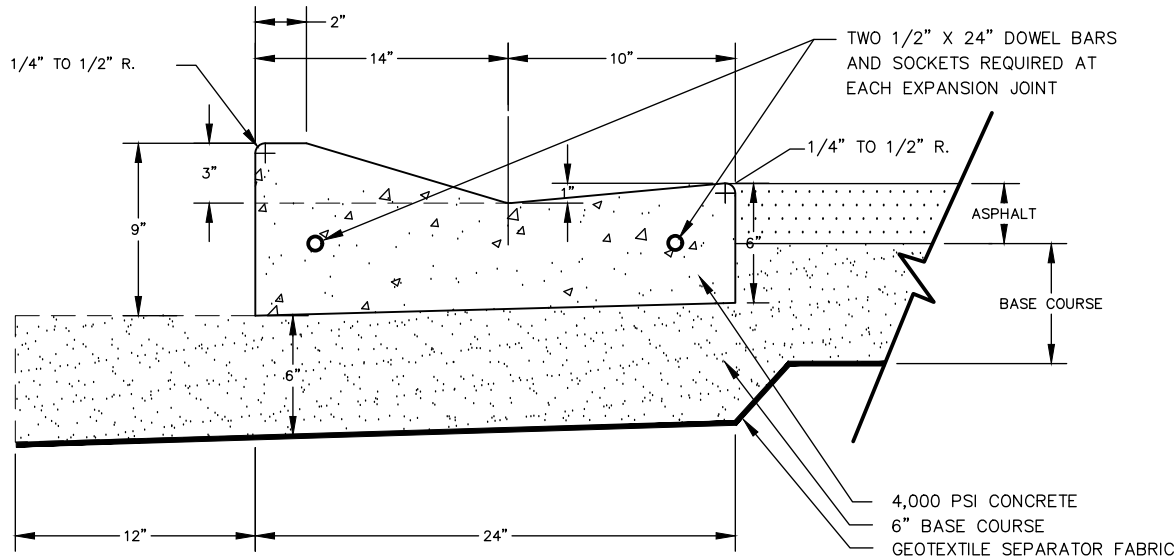
PCC FILLET SECTION  
NO SCALE

ALL REBARS SHALL BE EPOXY COATED AND CONFORM TO A.S.T.M. A615 GRADE 60 AND THE SOUTH DAKOTA STANDARD SPECIFICATIONS FOR ROADS AND BRIDGES, SECTION 480 AND 1010. ALL REBAR SHALL HAVE A MINIMUM OF 3" COVER.

THE CONCRETE CURB IS MONOLITHIC WITH THE CONCRETE FILLET. NO SEPARATE PAYMENT FOR THIS CURB WILL BE MADE AS THE CURB IS CONSIDERED A PART OF THE FILLET.

TRANSVERSE JOINTS SHALL BE CONSTRUCTED WHEN FILLETS ARE REPAIRED IN THE FILLET SECTION AS DIRECTED BY THE ENGINEER.

THE COST OF ALL MATERIALS, LABOR, AND INCIDENTALS NECESSARY TO REPAIR THE PCC FILLET SECTION WITH CURB AND GUTTER ARE INCIDENTAL TO THE CONTRACT UNIT PRICE PER SQUARE FOOT FOR "PCC FILLET SECTION."



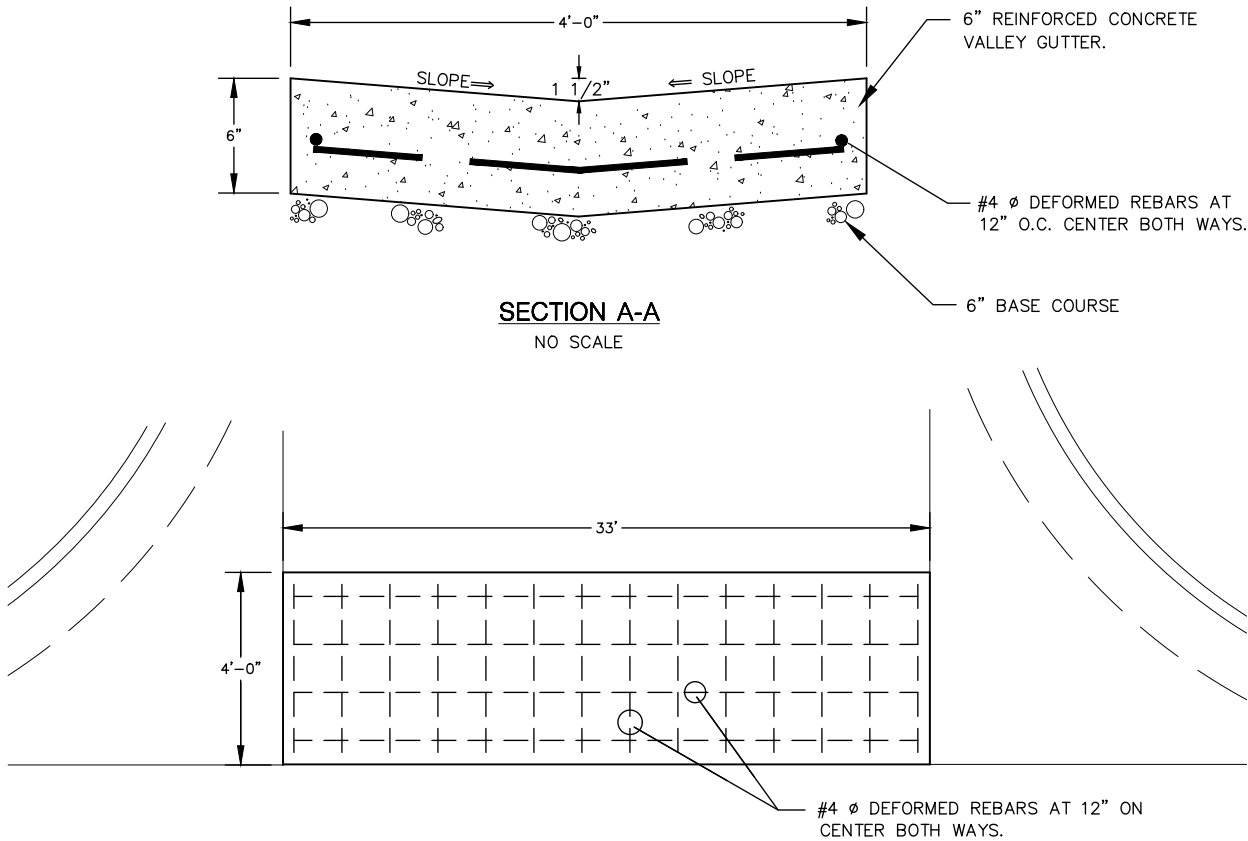
1/2" PREFORMED EXPANSION JOINT FILLERS SHALL BE PLACED TRANSVERSALLY IN THE CURB AND GUTTER AS FOLLOWS.

1. AT EACH JUNCTION OF RADIUS RETURN CURB AND GUTTER WHICH IS PARALLEL TO THE PROJECT CENTER LINE.
2. AT EACH JUNCTION WITH EXISTING CONCRETE CURB OR CONCRETE CURB AND GUTTER.
3. AT EACH JUNCTION WITH EXISTING CONCRETE SIDEWALK, TO THE DEPTH OF THE SIDEWALK.

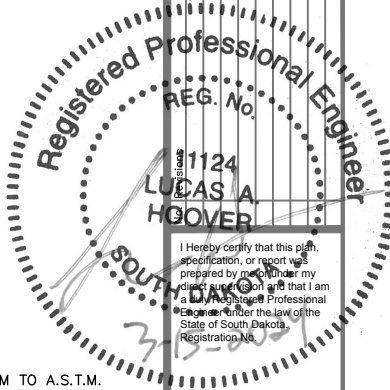
1/2" PREFORMED EXPANSION JOINT FILLER SHALL BE PLACED LONGITUDINALLY ALONG THE BACKFACE OF THE CURB TO THE DEPTH OF THE CONCRETE SIDEWALK, WHERE SUCH BACKFACE OF CURB IS ADJACENT TO AN EXISTING CONCRETE SIDEWALK.

WEAKENED PLANE JOINTS SHALL BE CONSTRUCTED AT 10' INTERVALS EXCEPT WHEN CURB AND GUTTER IS TO BE CONSTRUCTED ADJACENT TO PCC PAVEMENT. THEN THE JOINTS SHALL COINCIDE WITH THE PCC PAVEMENT'S TRANSVERSE JOINTS. THE JOINTS SHALL BE CONSTRUCTED TO A DEPTH OF ONE INCH BY SCORING WITH A TOOL WHICH WILL LEAVE THE CORNERS ROUNDED AND INSURE THE FREE MOVEMENT OF CONCRETE AT THE JOINT.

MODIFIED TYPE "M" 24 CONCRETE CURB AND GUTTER DETAIL  
NO SCALE



4' WIDE CONCRETE VALLEY GUTTER DETAIL  
NO SCALE



416 Production St. N.  
P.O. Box 111,  
Aberdeen, S.D. 57402  
Phone: 605.225.1212,  
Fax: 605.225.3189  
Email: bobb@helmsengineering.com

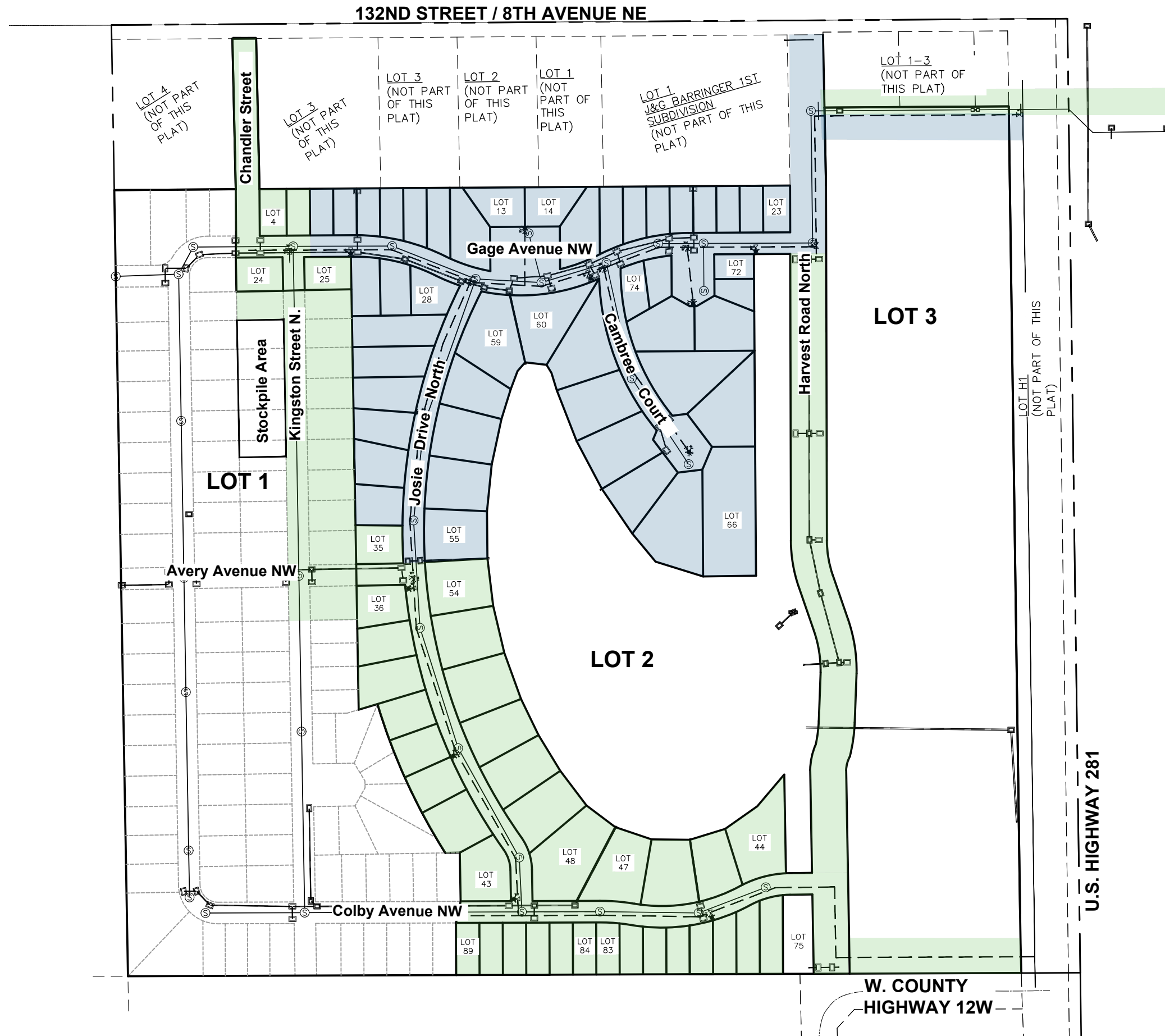


DETAILS

Drawn By: CLB  
Chk' By: LAH  
Proj. No: A8668  
Dwg. No: 8668-01  
VP. No: DET  
Date: 3/15/24

CONSTRUCTION PLANS FOR  
WEST EDGE SUBDIVISION  
ABERDEEN, SOUTH DAKOTA

CONTRACTOR SHALL HAUL  
EQUIPMENT AND MATERIAL FROM  
THE NORTH. THE CONTRACTOR  
WILL TAKE PRECAUTIONS TO  
NOT USE OR HAUL ACROSS  
PAVED SUBDIVISION STREETS.



SCALE  
1"=300' (11X17)  
1"=150' (24X36)

63  
OF  
109

