

## ADDENDUM

<b>ADDENDUM #</b>
<b>02</b>

<b>ISSUED BY</b>	Brittany Bauer (Wilkus Architects)		
<b>PROJECT</b>	Mellette Community Center		
<b>ISSUED ON</b>	10/18/18	<b>REGARDING CONSTRUCTION DOCUMENTS DATED</b>	08/13/18
<b>ISSUED TO</b>	Bidders List		

### NOTICE

The following list of items represents revisions and/or corrections to the Construction Documents bearing the date listed above. These items shall become a part of the Construction Documents and shall be included in the General Contractor's final bid to the Owner.

<b>ITEM</b>	<b>REVISION</b>		<b>REQUESTED BY</b>	Mettler Sichmeller Engineering
1	<b>CLARIFICATION</b>	X		
<b>DESCRIPTION:</b> MC Cable will be allowed as an approved wiring method.				

<b>ITEM</b>	<b>REVISION</b>		<b>REQUESTED BY</b>	Bidders
2	<b>CLARIFICATION</b>	X		
<b>DESCRIPTION:</b> Bottom of truss dimensions as shown on attached exhibit.				

<b>ITEM</b>	<b>REVISION</b>		<b>REQUESTED BY</b>	Bidders
3	<b>CLARIFICATION</b>	X		
<b>DESCRIPTION:</b> Location of display case is in the Entry. Verify exact location with owner. Provide blocking as required.				

<b>ITEM</b>	<b>REVISION</b>	X	<b>REQUESTED BY</b>	Bidders
4	<b>CLARIFICATION</b>			
<b>DESCRIPTION:</b> Delete Section 055000 – Metal Fabrications Metal Ships Ladder. Ships ladder to be constructed per drawings.				

<b>ITEM</b>	<b>REVISION</b>	X	<b>REQUESTED BY</b>	Bidders
1	<b>CLARIFICATION</b>			
<b>DESCRIPTION:</b> Delete reference on Finish Materials List to exterior M-1 roofing. Provide per specification.				

ITEM 2	REVISION		REQUESTED BY	Bidders
	CLARIFICATION	X		
DESCRIPTION: Acoustical ACT-1 is Type III. ACT-2 is Type IV. See specification section 095113 – Acoustical panel Ceilings.				

ITEM 5	REVISION		REQUESTED BY	Bidders
	CORRECTION	X		
DESCRIPTION: Disregard keynote #4 on A700 and keynote #7 on A701.				

ITEM 2	REVISION		REQUESTED BY	Bidders
	CLARIFICATION	X		
DESCRIPTION: The ramp handrail is mounded to the building per 5/A100. The rail to the North is mounted on the wood guardrail per 4/A100.				

Addendum No. ME-1  
To Mechanical & Electrical Plans and Specifications:  
**Mellette Community Center**  
**Mellette, South Dakota**

Addendum Dated: October 18, 2018

Original Plans & Specifications Dated: August 13, 2018

SCOPE OF THIS ADDENDUM: The following becomes a part of the original plans and specifications, taking precedence over the items that may conflict. The bidder shall note receipt and make acknowledgement of the addendum on his bid form, incorporating its provision in his bid.

PLAN AND SPECIFICATION CHANGES AND CLARIFICATIONS:

1. MC Cable shall be an approved wiring method.

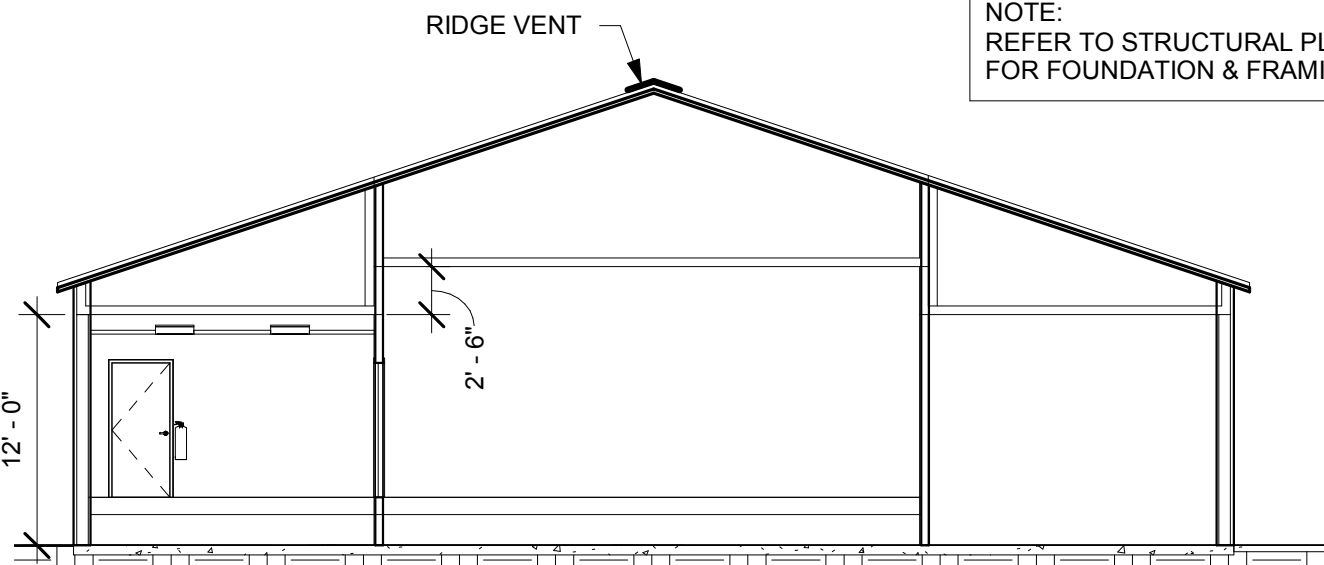
APPROVED EQUALS:

The following list of equipment manufacturer's shall be added to the approved equals listed on the plan sheet schedules, and considered as approved equals subject to meeting all requirements of the plans and specifications – final acceptance subject to shop drawing approval.

1. Mop Sink: Fiat Products
2. Electric Water Heater: Bradford White, AO Smith, State Industries
3. Gas Furnaces: Luxaire
4. Condensing Units & DX Cooling Coil: Luxaire
5. Indoor Energy Recovery Ventilators: Broan
6. Stationary Louvers: NCA Manufacturing

Travis J. Sichmeller, P.E.  
Blake Woodward, P.E.  
Mettler Sichmeller Engineering  
(605) 225-4344

Attachments: None.



NOTE:  
REFER TO STRUCTURAL PLANS  
FOR FOUNDATION & FRAMING

1  
CB-A1

**EAST / WEST BUILDING SECTION - (THRU RAISED PLATFORM)**

1" = 10'-0"