

April 2, 2020

Re: GA Terminal / Revenue Producing Hangar
Platte Municipal Airport
Platte, South Dakota
AIP # 3-46-0066-011-2020
A-6822

Bid Opening: **April 6, 2020**
4:00 pm Local Time

ADDENDUM NUMBER 1

The following modifications are made to the plans and specifications for the GA Terminal / Revenue Producing Hangar, Platte Municipal Airport:

COVID-19 Precautions

The City of Platte office is currently closed to the public; however, this is a public bid opening. The City of Platte cannot legally restrict access to this project's bid opening; however, they do respectfully ask that only **one** representative per bidder be present for the public opening and reading of the bids in an effort to follow the recommendations of the Governor of South Dakota and the guidelines to prevent the spread of COVID-19. In addition, the City of Platte shall enforce the "social distancing" rule and, therefore, anyone attending the meeting will be required to comply with said rule.

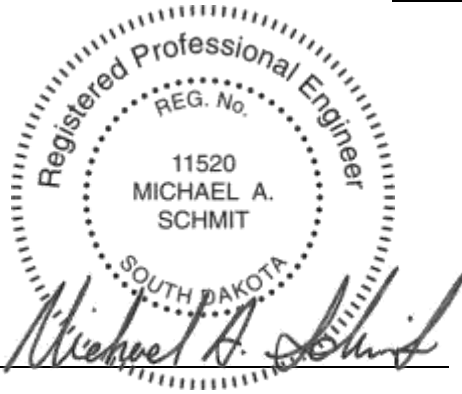
PLANS

1. Sheet 2, Site Plan, add the following note:

SITE GRADING

Contractor shall grade from the GA Terminal / Revenue Producing Hangar at a maximum slope of 10:1 (Horizontal:Vertical) to provide positive drainage. These areas shall be surfaced with 6" of salvaged Gravel Surfacing from the site.

**ALL OTHER ITEMS OF THE PLANS AND SPECIFICATIONS REMAIN
UNCHANGED**



BY: _____

PROJECT ENGINEER – HELMS & ASSOCIATES

Acknowledge receipt of the Addendum by inserting its number on the Proposal Form. Failure to do so may subject bidder to disqualification. This Addendum forms a part of the Contract Documents. It modifies them as above.



Ciavarella Design, Inc.

410 W 2nd Avenue, Suite 4
Mitchell, SD 57301
www.ciavarelladesign.com

(605) 996-3735

GA Terminal / Revenue Producing Hangar

Platte Municipal Airport
Platte, South Dakota

Addendum 1
04-02-2020

The following becomes part of the original Plans and Specifications, just as if printed and bound therein, and takes precedence over any items that may conflict. All bidders shall acknowledge receipt of this Addendum on their Bid Form, incorporating its provisions in his bid.

General Information

1. Bid Date is April 6, 2019 at 4:00 PM CT.

Specification Information

1. Section 08 3430 – Vertical Bi-Fold Hangar Door
 - a. Bi-fold door shall have interior liner sheeting.
 - b. Glazing in the bi-fold door shall be manufacturer's standard insulated glass/window.
 - c. Revise paragraph 2.10.A to read "Manufacturer's standard automatic latching system."
 - d. Door insulation shall be manufacturer's standard 4" insulation system.
2. Section 08 5113 – Aluminum Windows
 - a. Omit hopper windows from specification. Windows are intended to be fixed. Storefront systems will be allowed, provided they meet the specifications of this section.
3. Section 13 3419 – Metal Building Systems
 - a. Wind load shall be 115mph
 - b. Snow load shall be 40 psf
 - c. There should be no live load. Roof live/snow loads would be unreducible.
 - d. Shop drawings will need to be approved by Architect prior to ordering of the metal building system.

Drawing Information

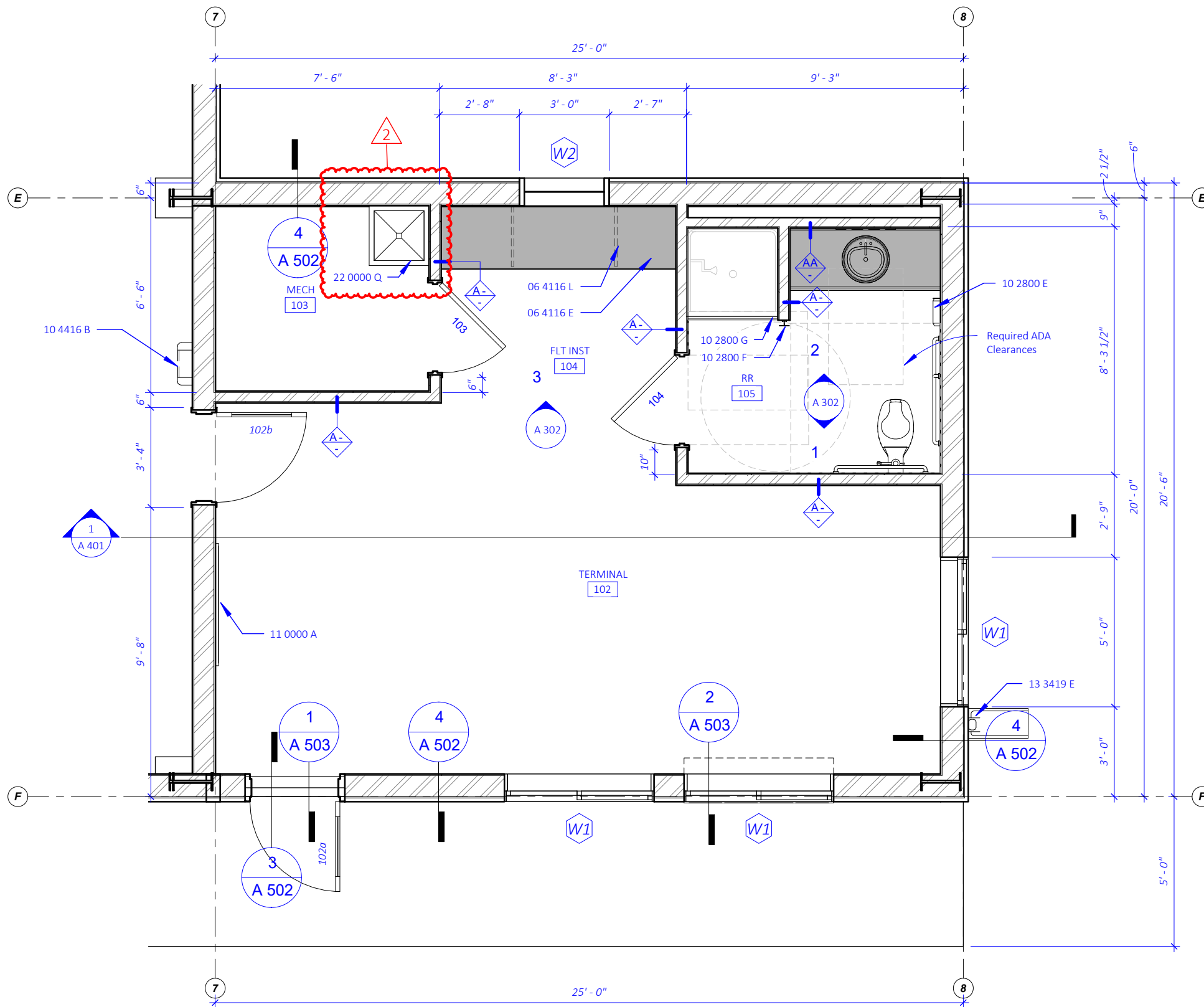
1. A mop sink and holder have been added to the plan. Provide FRP board on back and side walls 48 inches high by the width of the mop sink.
2. Provide adequate eave height to accommodate 18' high x 65' wide bi-fold doors. Clear opening height, with the bi-fold door in its retracted position, to be no less than 18'-0".
3. Drawings indicate 1 inch insulated glass. This is intended for the 3'x7' swinging doors. No fire ratings are required on this project.
4. Rural water service comes from an existing water meter and pit. Omit the water meter and pit from this project
5. Sand/Oil separator: Omit reference to Neenah R4840. Specifications should be followed.
6. Sheet E1.02
 - a. Water Heater is changing to an instantaneous style. Add 2-70A, 240 V connections from Panel A with #6 wires to them. Add 2-100A, 240V disconnects for these connections.
7. Sheet E4.01
 - a. Starter/Disconnect Schedule:
 - i. Change WH-1 disconnect from 1 - 30A, to 2 - 100A disconnects.
8. Sheet E4.03
 - a. Panel A
 - i. Change WH-1 circuit breaker to 2 - 70A, 2 pole breakers, use #6 wires.

Approved Equals

Note: All approved equals must meet all specifications as listed in their prospective sections.

1. Section 08 3430 – Vertical Bi-Fold Hangar Door
 - a. Midland Door Solutions Bi-Fold Door
 - i. AJ Manufacturing 905 Series White Aluminum Fixed lite
2. Section 08 5113 – Aluminum Windows
 - a. CMI Architectural
3. Section 13 3419 – Metal Building Systems
 - a. Double-Lok; Star Building Systems
4. Section 23 0000 – Mechanical
 - a. Package Air Conditioner

- i. Friedrich
 - ii. Islandair
- 5. M3.0
 - a. CO Detection System
 - i. INTEC Controls
- 6. M5.0
 - a. Louvers
 - i. NCA Manufacturing
 - b. Ceiling, Wall, and Roof Ventilators
 - i. PennBarry
 - ii. Aerovent by Twin City Fan



1 ENLARGED PLAN - TERMINAL
Scale 1/4" = 1'-0"

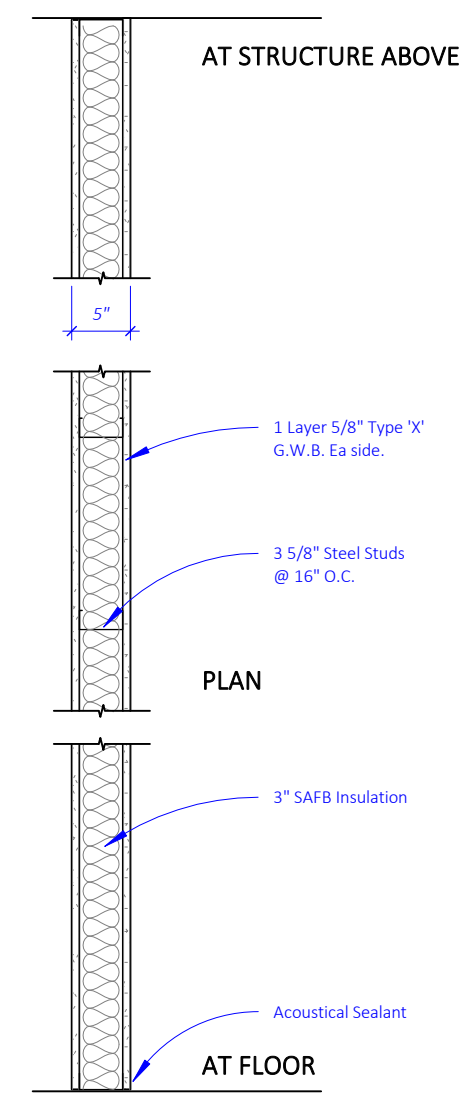
SPEC NOTES

- 06 4116 E COUNTERTOP, PLAM
- 06 4116 L COUNTERTOP SUPPORT BRACKET
- 10 2800 E PAPER TOWEL DISPENSER, SURFACE MOUNTED, PROVIDED AND INSTALLED BY OWNER
- 10 2800 F ROBE HOOK
- 10 2800 G SHOWER CURTAIN AND ROD
- 10 4416 B FIRE EXTINGUISHER CABINET, SEMI-RECESSED
- 11 0000 A TV, BY OWNER
- 13 3419 E DOWNSPOUT, OPEN-FACED, PREFIN METAL WITH PREFIN INTERIOR TO MATCH METAL BLDG WALL PANEL. CONTRACTOR TO DETERMINE NECESSARY QUANTITY AND SPACING, BY METAL BUILDING CONTRACTOR
- 22 0000 Q MOP SINK AND HOLDER W/ F.R.P. BOARD ON BACK AND SIDE WALLS, 48"H x WIDTH OF SINK, See Mech. Mount WH-1 above on shelf.

GENERAL FLOOR PLAN NOTES

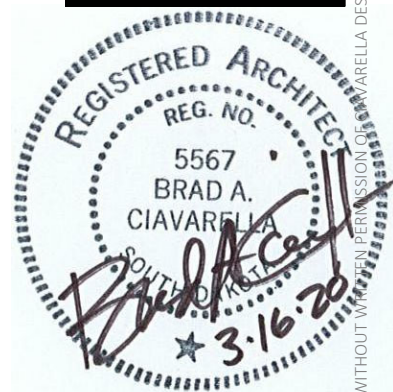
- A. INTERIOR & EXTERIOR DIMENSIONS ARE TO FACE OF STUD, U.N.O.
- B. SEE SHEET A 702 FOR DOOR SCHEDULE

WALL TYPES



- A- INT. 3 5/8" METAL STUD WALL
- AA- INT. 3 5/8" METAL STUD WALL (5/8" G.W.B. ONE SIDE ONLY, OMIT SAFB BEHIND VANITY)

CIAVARELLA DESIGN ARCHITECTS
410 W 2nd Ave, Suite #4
Mitchell, SD 57301
605.996.3735
www.ciavarelladesign.com



I hereby certify that this plan, specifications, or report was prepared by me or under my direct supervision and that I am a duly Registered Architect under the laws of the State of South Dakota.

GA Terminal / Revenue Producing Hangar
Platte, South Dakota
Enlarged Floor Plan

REVISION SCHEDULE

#	Description	Date
1	Bid Set	03/16/2020
2	Addendum 1	04/02/2020

Issue Date: March 16, 2020
Drawn By: KDG
Checked By: BC

A 203

THESE DRAWINGS ARE A COPYRIGHT 2020 DOCUMENT; THESE DRAWINGS SHALL NOT BE REPRODUCED, COPIED OR USED IN ANY OTHER WAY WITHOUT WRITTEN PERMISSION OF CIAVARELLA DESIGN, INC.