

January 24, 2025

Re: Manor Pickleball Courts Phase II
Aberdeen, South Dakota
A-8381

Bid Opening: **January 27, 2025**
2:00 pm Local Time

ADDENDUM NUMBER 1

The following modifications become a part of the original plans and specifications, taking precedence over the items that may conflict. The bidder shall note receipt and make acknowledgement of the addendum on his bid form, incorporating its provisions in his bid.

CONTRACT DOCUMENTS AND TECHNICAL SPECIFICATIONS

1. BIDDING CLARIFICATION, ITEM 2 “Strip and Stockpile Topsoil”- *The stockpile location will be onsite and will not require hauling*

2. BIDDING CLARIFICATION, ITEM 3 “Unclassified Excavation”- *This shall include the removal of the tree stump shown on page 2 of the plans.*

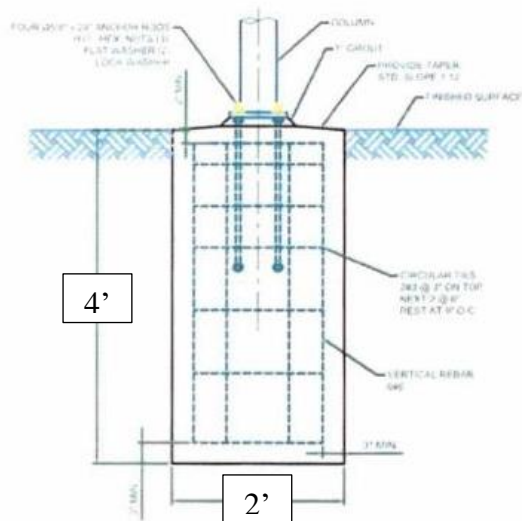
3. PLANS, PAGE 5- *8’ Chain link Fence shall be used, not 10’ Chain Link Fence. This is correct on the Bid Tab.*

4. PLANS, PAGE 7- *12” Thickened Edge Detail- #4 Rebar shall be used in lieu of #5 Rebar.*

5. PLANS, PAGE 7- *Insert this detail for the Umbrella Foundations.*

Non-constrained: When the surrounding area of a drilled pier does not have any additional reinforcement other than the natural soil.

These footings are designed specifically for a 20’ diameter Coolbrella Model 102.3 and are not valid for any other model. These are engineered for 60 MPH winds maximum.



B. Surface-Mounted Plate

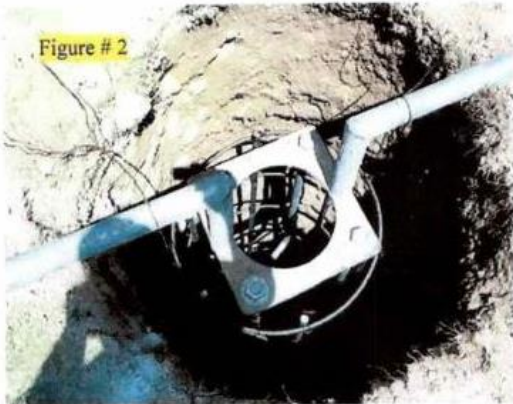


Figure # 2

Base Plate Columns

- Surface-Mounted or Recessed Plate Columns will require you to make a template the same pattern as the base plate on the column for holding the anchor bolts while pouring concrete. **See figure # 2**
 - The most common template would be a ¼" piece of plywood that has holes drilled at the exact center of the anchor locations on the base plate.
 - We suggest making this template double-thick so it does not warp or bow while placing concrete.
- Note: The entry height can be established by measuring from the top plate. See the drawings at the bottom of the page to verify.
- Secure the braces to ensure they do not move during the concrete pour. **See figure # 4**
 - This can be done with stakes placed on either side of the brace or template.
 - Use 3" adobe blocks to keep the cages from touching the sides of the footing wall.
 - It helps to hold the cage with a shovel for extra support when pouring concrete.
- Use a concrete vibrator throughout the pour to distribute concrete evenly. **See figure # 5**
 - Stab concrete at different spots in 5 second intervals.
- Hold the vibrator in each location for no longer than 5 second intervals to distribute concrete evenly.



Figure # 4



Figure # 5



Figure # 6

7. Frame Installation- (for Embed move to the next page)
Base Plate Columns



- To plumb the columns during installation, it is easiest to level the nuts first before installing columns. **See figures # 6 and # 7**
 1. Remove the template.
 2. Keep the level on one nut and twist the other three left or right to get them all at the same level.
- Lift the columns and lower them onto the anchors very carefully, taking care to not damage the threads.
- Keep a bubble level on the column and tighten all of the nuts until the lock washer is compressed and each column is plumb.

Sleeved Columns

- Remove plate and screw on column.

ALL OTHER ITEMS OF THE PLANS AND SPECIFICATIONS REMAIN UNCHANGED



BY: _____

PROJECT ENGINEER – HELMS & ASSOCIATES

Acknowledge receipt of the Addendum by inserting its number on the Bid Form. Failure to do so may subject bidder to disqualification. This Addendum forms a part of the Contract Documents. It modifies them as above.