

July 25, 2025

Re: Aberdeen Water Tower and Transmission Line
Aberdeen, South Dakota
SRF # C462072-04
EDA# 05-79-06091
Helms # 8542

Bid Opening: **July 29, 2025**
2:00 pm (local time)

ADDENDUM NUMBER 1

The following modifications are made to the plans and specifications for the Aberdeen Water Tower and Transmission Line Project.

CONTRACT DOCUMENTS AND TECHNICAL SPECIFICATIONS

CIVIL CONSTRUCTION SPECIFICATIONS AND CONTRACT DOCUMENTS

1. Section 00 21 13 Instruction to Bidders Article 18: add the following part;

Part 18.08 Owner intends to award two separate contracts. One contract for schedule A and One Contract for Schedule B. Contractors may bid one **OR** both schedules. If a single contractor is awarded both schedules, one contract shall be issued. Schedules shall be considered separate bids when considering the lowest responsive bidder.

2. Section 00 80 00 Supplementary Conditions Article 17 Part 7.10 Taxes: delete SC-7.10 in its entirety;

Note: The Project will be subject to Use and Sales Taxes.

3. Section 00 74 10 State Revolving Fund (SRF) General Conditions; Fair Share Objective: revise percentages with paragraph B. as shown below;

B. Fair Share Objective

1. The fair share objective for this project is **1.5%** MBE's and **2.4%** WBE's.

Goals for minority and female participation remain as indicated in the instructions to bidders at 1.3% and 6.9%.

4. Section 00 75 00 EDA General Conditions: add the following paragraph;

Executive Order 11246 (“Equal Employment Opportunity”), which is referenced in the EDA Contracting Provisions, was revoked by Executive Order 14713 (“Ending Illegal Discrimination and Restoring Merit-Based Opportunity”), on January 21, 2025. Accordingly, on July 1, 2025, the Department of Labor proposed rescission of the regulations at 41 CFR § 60-1.4 and 41 CFR § 60-4 which implement Executive Order 11246. Until such time as the regulations are rescinded or unless there is additional Department of Labor guidance addressing the issue, the Contractor agrees to comply with all applicable requirements of 41 CFR § 60-1.4 and 41 CFR § 60-4.

5. Section 01 55 26 Traffic Control; add the following Part 3.14:

3.14 Permanent Pavement Markings. The Contractor will be required to repaint all existing pavement markings including edge lines/lane lines, (12,000 ft -4W), word messages, stop bars (5-24W), cross walk marking(1), railroad crossings X (1). This list is to be used for bidding purposes for approximate scope of pavement markings. All stop bars shall be grinded prior to placement and shall be painted as suitable for surface type. The Contractor will be required to document all marking and be able to relocate for replacement of the existing. The cost to duplicate the existing marking locations will be incidental to the contract unit prices for the various contract items.

All materials will be applied as per manufacturer’s recommendations. High build waterborne pavement marking paint will conform to the 2015 SD DOT Standard Specifications, Supplemental specifications for Section 980.1B. All cost for materials, labor and equipment necessary to furnish and install pavement markings will be incidental to the related contract items.

6. Section 32 11 26.16 Milling/Pulverization of Existing Asphalt Surface and Base; Part 2.01A: remove and replace gradation table with below;

Sieve Designation (square openings) as per ASTM C 136	Percentage by Weight Passing Sieves
3 inch (75.0 mm)	100
No. 10 (2.0 mm)	20-100
No. 40 (0.450 mm)	5-60
No. 200 (0.075 mm)	0-15

7. Section 33 05 19 Pressure Piping Tied Joint Restraint System; Part 2.02: add the following part;

Part 2.02D Mechanical Joint (MJ) valves and fittings shall be connected using a bolt through positive restraint mechanism made of ductile iron conforming to ASTM A536. The positive restraint device shall connect the valves and or fittings at a linear distance not to exceed three inches and without attachment to pipe. Foster Adapters shall be epoxy coated and utilize Type 304 or 316 stainless steel bolts and nuts. Products shall meet the AIS requirements. Devices shall come complete with all accessories, including MJ gaskets. Foster Adapters shall be incidental to the related bid items and not measured for separate payment.

8. Section 33 05 23.16 Utility Pipe Jacking; Part 2.04: approved equal;

Fusible polyvinyl chloride (PVC) pipe shall conform to AWWA C900, ASTM D2241 or ASTM D1785, as applicable. Testing shall be in accordance with the test methods provided or referenced in the applicable pipe standard.

Cartridge-loaded, restrained joint polyvinyl chloride pipe starting stock shall be made to the AWWA C900 standard. The finished product shall be tested in accordance with AWWA C900.

9. Section 33 11 00 Water Utility Piping and Fittings; Part 1.04: add the following part;

Part 1.04F Pipe shall be furnished with low density polyethylene (LDPE) plugs and caps. Caps and Plugs shall be easily removable by hand. Contractor shall leave plugs in bell end until ready for placement of next “stick” of pipe. Plugs shall not reach to the bell gasket such that contractor can pre-lube the bell ends if desired prior to placement in trench.

10. Section 33 11 00 Water Utility Piping and Fittings; Part 2.02: add the following part;

Part 2.02F when fittings with multiple sizes are required but not readily available the contractor may use the largest called for size for the fitting along with a single reducer per branch of the tee or cross to achieve the correct diameter. The reducer cost shall be incidental to the fittings called out in the plans and specifications and not measured separately unless specifically called for in the plans as a reducer.

11. Section 33 11 00 Water Utility Piping and Fittings; Paragraph 2.03D: add the following sentence to the paragraph;

D.To consider any pipe laying lengths longer than 20ft, they shall meet the required AWWA certifications required within these specifications and plans.

12. Section 33 11 00 Water Utility Piping and Fittings; Part 2.06: add the following part;

Part 2.06K C900 DR25 is approve for use as casing pipe as part of this section for water and sewer separation purposes.

13. Section 33 11 00 Water Utility Piping and Fittings; Part 2.07F: approved equal;

UGS Fusible PVC: Fusible polyvinyl chloride (PVC) pipe shall conform to AWWA C900, ASTM D2241 or ASTM D1785, as applicable. Testing shall be in accordance with the test methods provided or referenced in the applicable pipe standard.

UGS TerraBrute CR: Cartridge-loaded, restrained joint polyvinyl chloride pipe starting stock shall be made to the AWWA C900 standard. The finished product shall be tested in accordance with AWWA C900.

14. Section 33 16 19 Elevated Water Storage Reservoir; Part 1.01: add the following part;

Part 1.01C AWWA D107 and industry standards for the composite tank support wall relating to concrete mixes, curing, form removal items, etc. in lieu of Section 03 30 00. All other work not related to the tower structure above grade shall be as noted in Section 03 30 00 unless preapproved by the Engineer.

15. Section 33 16 19 Elevated Water Storage Reservoir; Part 1.04E: remove and replace with the following;

Part 1.04E Contractor shall use the load combinations published in the latest version of AWWA-D107 for design of the composite water storage tank.

16. Section 33 16 19 Elevated Water Storage Reservoir; Part 2.03D: add the following paragraph;

Contractor may eliminate the buttress at openings larger than 8ft with stamped by license engineer design concept and analysis, furnished to Owner/Engineer as part of submittal package.

17. Section 33 16 19 Elevated Water Storage Reservoir; Part 2.06.B: add the following paragraph;

Contractor may use square ladder rungs with one edge pointed up.

18. Section 33 16 19 Elevated Water Storage Reservoir; Part 2.06.C: add the following paragraph;

DBI-SALA Lad-Saf System is approved safety climb device.

19. Section 33 16 19 Elevated Water Storage Reservoir; Part 2.08: add the following part;

Part 2.08F the tower shall feature two logos appropriately sized to the shell height. Logo shall match as shown below.



20. Section 33 16 19 Elevated Water Storage Reservoir; Part 2.09C: revise paragraph to read;

C. The walls and ceiling shall be constructed of structurally insulated panels by Extreme Panel Technologies Inc or approved Equal. The panels shall be constructed of 5/8" treated plywood with 0.04-S FRP on both sides and 5-5/8" foam. **The control room shall include a 6ft x7ft double insulated steel door. Door shall be painted "gray" and furnished with stainless steel hardware without locks.** The control room shall be installed as per the manufactures recommendation. The floor shall be concrete. Wedge anchors connecting sill plats for the permanent walls shall be supplied by Contractor.

21. Section 33 16 19 Elevated Water Storage Reservoir; Part 2.10: add the following paragraph;

E. Aluminum jacketing shall be min. 0.016" thickness, smooth finish.

22. Section 33 16 19 Elevated Water Storage Reservoir; Part 3.03A: add the following paragraph;

Concrete forms from 4ft to 12ft are approved for use.

23. Section 33 16 19 Elevated Water Storage Reservoir; Part 3.05B: add the following paragraph;

Tnemec Coating Systems are approved equal.

Interior/Exterior Zinc: 94 zinc

Interior Strip Coat: N140

Interior topcoat: Series 22

Exterior intermediate: Series 1095 urethane

Exterior topcoat: Series 700

24. Section 33 16 19 Elevated Water Storage Reservoir; Part 3.05E: delete.

25. Section 33 16 19 Elevated Water Storage Reservoir; Part 3.06A: add the following paragraph.

Hydrostatic test and disinfection process can be combined. This can be done after painting.

26. Section 40 73 14 Air Release Valve (ARV); Part 2.01: revise Part 2.01F to read;

The air release valve shall be as manufactured be ARI D-46 2" with a one-way out valve. Connection shall be made to watermain with a 2" Saddle. See Section 32 12 13 for saddle specifications.

PLANS:

SHEET 15 & 28: Plan Note Clarification: Contractor may directional bore in lieu of jack and bore at the locations called for on sheet 15 & 28. Should the contractor elect to directional bore, without casing

pipe, the quantity referenced will be removed from the project. Directional bore of the watermain without casing pipe shall be incidental to the 16" Watermain Bid Item. Should the contractor directional bore casing pipe then the quantities will be measured as part of Bid Item 15.

SHEET 41: Clarification: Schedule A work shall include installation of 20" Valve, tee and hydrant. Schedule B work shall connect to existing valve. If the Schedule B work is completed prior to the installation of Schedule A valve, contractor for Schedule A shall connect to existing water tower piping.

SHEET 42: Any reference to AWWA D100 shall be removed and replaced with AWWA D107

SHEET 42: Maximum Range shall be 40'- 0" in lieu of 35'-0". The High water line and max height elevation shall not be changed.

SHEET 42: Inlet/Outlet Pipe and Overflow Pipe shall be stainless steel as specified and shall not be measured for separate payment. Inlet/Outlet and Overflow pipe within the tower shall be incidental to related bid items.

SHEET 43: Any reference to electrical requirements shall be superseded by Sheets E2 and E3.

SHEET 43: Stainless Steel Pipe shall be utilized on the interior of the tower. Ductile Iron pipe shall begin at the floor, to the existing valve from Schedule A.

SHEET 46-53: TRAFFIC CONTROL: Remove and Replace traffic control sheets with attached.

SHEET 57: Contractor shall install restraining devices on any pipe joint a minimum of 20ft from fittings.

SHEET 58: AIR RELEASE MANHOLE DETAIL: Contractor shall utilize a saddle for installation of air release valves as noted in the project specifications.

ATTACHEMENTS:

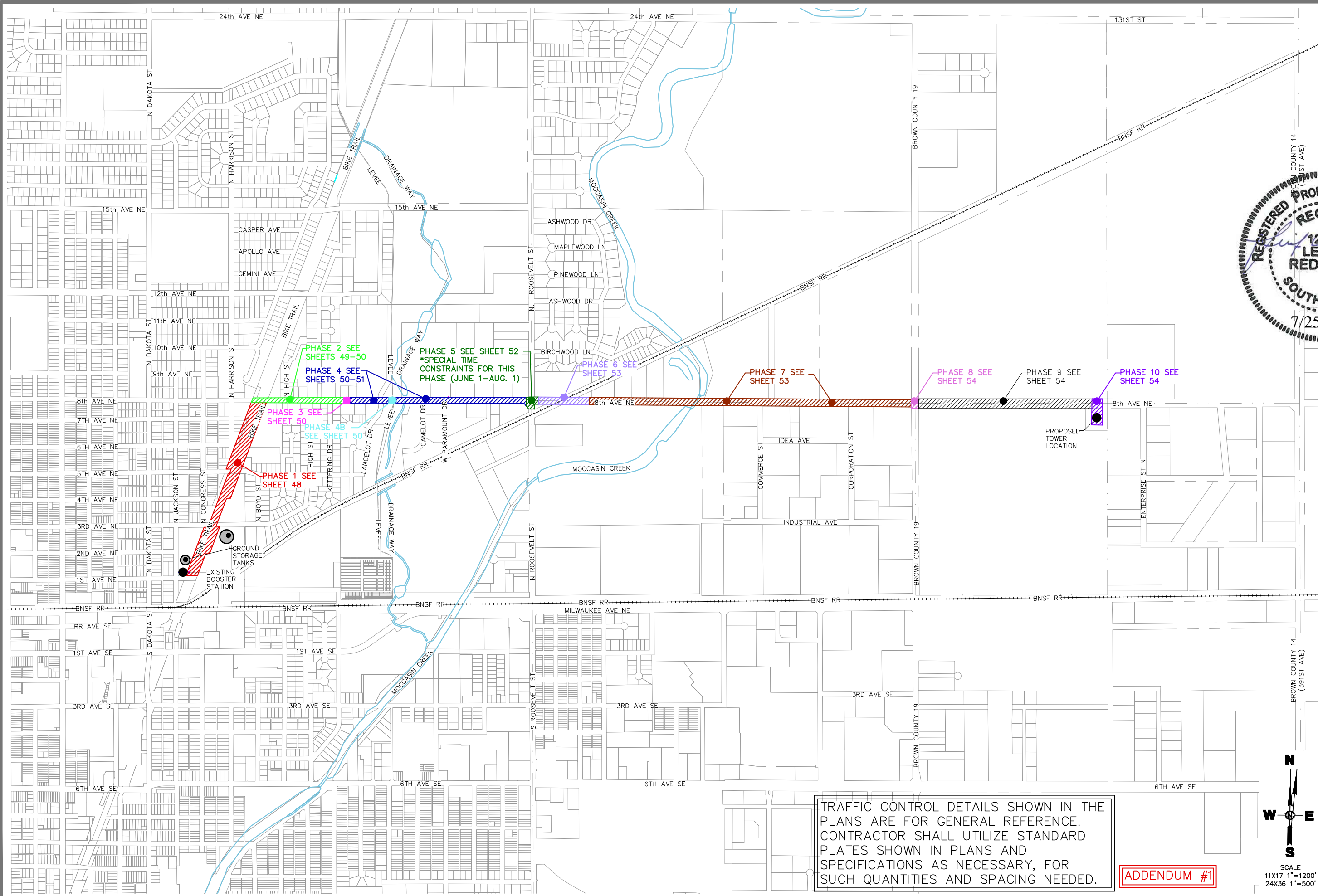
TRAFFIC CONTROL PLAN SHEETS # 46-53

BY: 

PROJECT ENGINEER – HELMS & ASSOCIATES



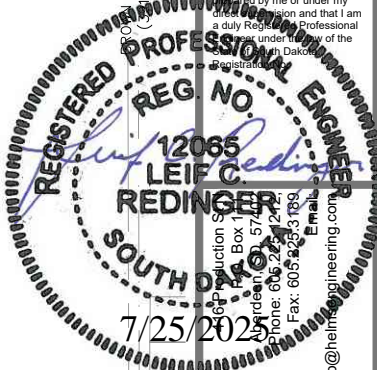
Acknowledge receipt of the Addendum by inserting its number on the Bid Form. Failure to do so may subject bidder to disqualification. This Addendum forms a part of the Contract Documents. It modifies them as above.



TRAFFIC CONTROL DETAILS SHOWN IN THE PLANS ARE FOR GENERAL REFERENCE. CONTRACTOR SHALL UTILIZE STANDARD PLATES SHOWN IN PLANS AND SPECIFICATIONS AS NECESSARY, FOR SUCH QUANTITIES AND SPACING NEEDED.

ADDENDUM #1

SCALE
11X17 1"=1200'
24X36 1"=500'



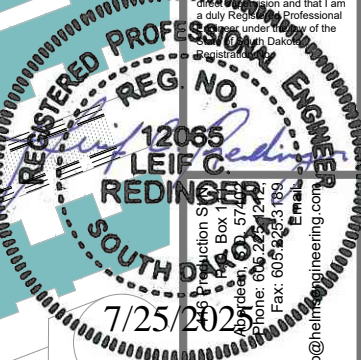
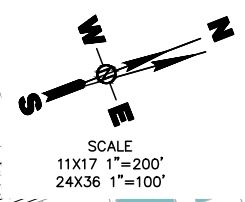
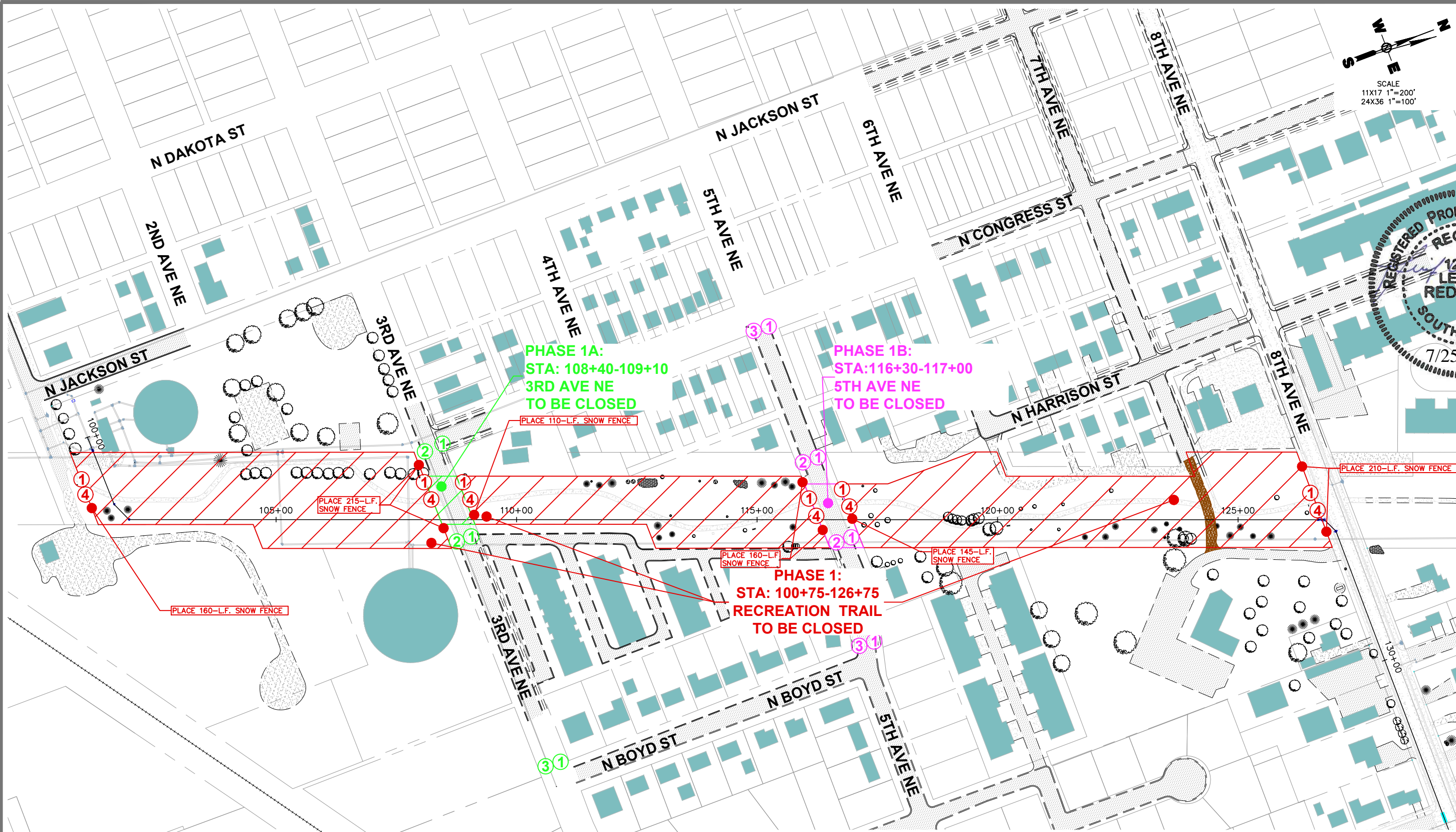
TRAFFIC CONTROL
PHASING PLAN
ABERDEEN WATER TOWER
& TRANSMISSION LINE
ABERDEEN, SOUTH DAKOTA

Drawn By: TMO
Chk' By: LCR
Proj. No: A-8542
Dwg. No: 8542-04
VP. No: DETOUR
Date: 7/25/25

Helm
& ASSOCIATES
CIVIL ENGINEERS & LAND SURVEYORS

No.	Revisions	Date
1	ADDENDUM #1	7/25

I Hereby certify that this plan, specification, or report was prepared by me or under my direct supervision and that I am a duly Registered Professional Engineer under the laws of the State of South Dakota.
bobb@helms-engineering.com



Helm & Associates
CIVIL ENGINEERS & LAND SURVEYORS

TRAFFIC CONTROL PLAN
ABERDEEN WATER TOWER
& TRANSMISSION LINE
ABERDEEN, SOUTH DAKOTA

Drawn By: TMO
Chk' By: LCR
Proj. No: A-8542
Dwg. No: 8542-04
VP. No: TRAF200(1)
Date: 7/25/25

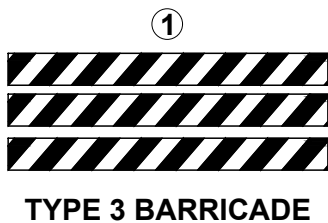
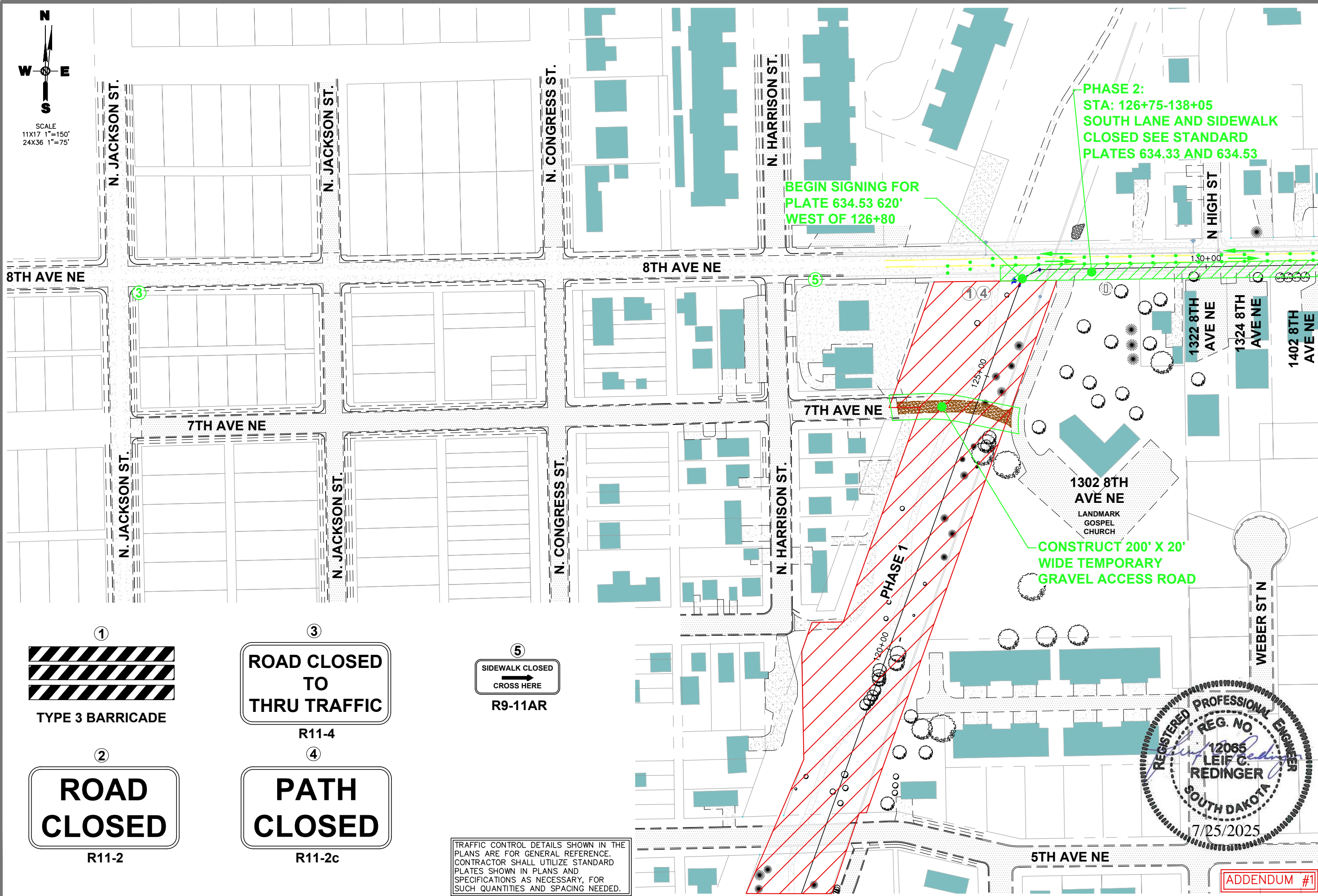
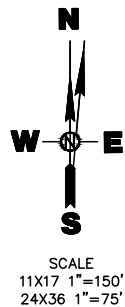
TRAFFIC CONTROL DETAILS SHOWN IN THE PLANS ARE FOR GENERAL REFERENCE. CONTRACTOR SHALL UTILIZE STANDARD PLATES SHOWN IN PLANS AND SPECIFICATIONS AS NECESSARY, FOR SUCH QUANTITIES AND SPACING NEEDED.

TYPE 3 BARRICADE

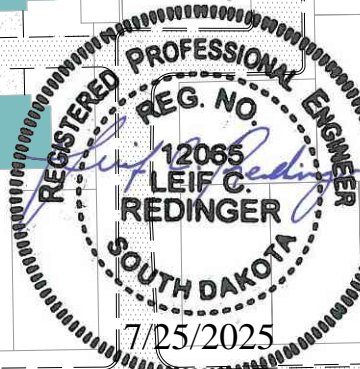
**ROAD
CLOSED**
R11-2

**ROAD CLOSED
TO
THRU TRAFFIC**
R11-4

**PATH
CLOSED**
R11-2c
ADDENDUM #1



TRAFFIC CONTROL DETAILS SHOWN IN THE PLANS ARE FOR GENERAL REFERENCE. CONTRACTOR SHALL UTILIZE STANDARD PLATES SHOWN IN PLANS AND SPECIFICATIONS AS NECESSARY, FOR SUCH QUANTITIES AND SPACING NEEDED.



ADDENDUM #1

Date
7/25

Revisions
1

ADDENDUM #1

I Hereby certify that this plan, specification, or report was prepared by me or under my direct supervision and that I am a duly Registered Professional Engineer under the law of the State of South Dakota.
Registration No.

416 Production S/N
P.O. Box 111,
Aberdeen, S.D. 57402
Phone: 605.225.1212,
Fax: 605.225.3189
Email:
bobb@helmsengineering.com

CIVIL ENGINEERS & LAND SURVEYORS

TRAFFIC CONTROL PLAN

ABERDEEN WATER TOWER
& TRANSMISSION LINE
ABERDEEN, SOUTH DAKOTA

Drawn By: TMO

Chk' By: LCR

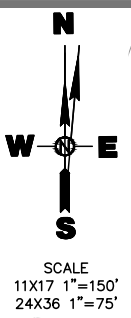
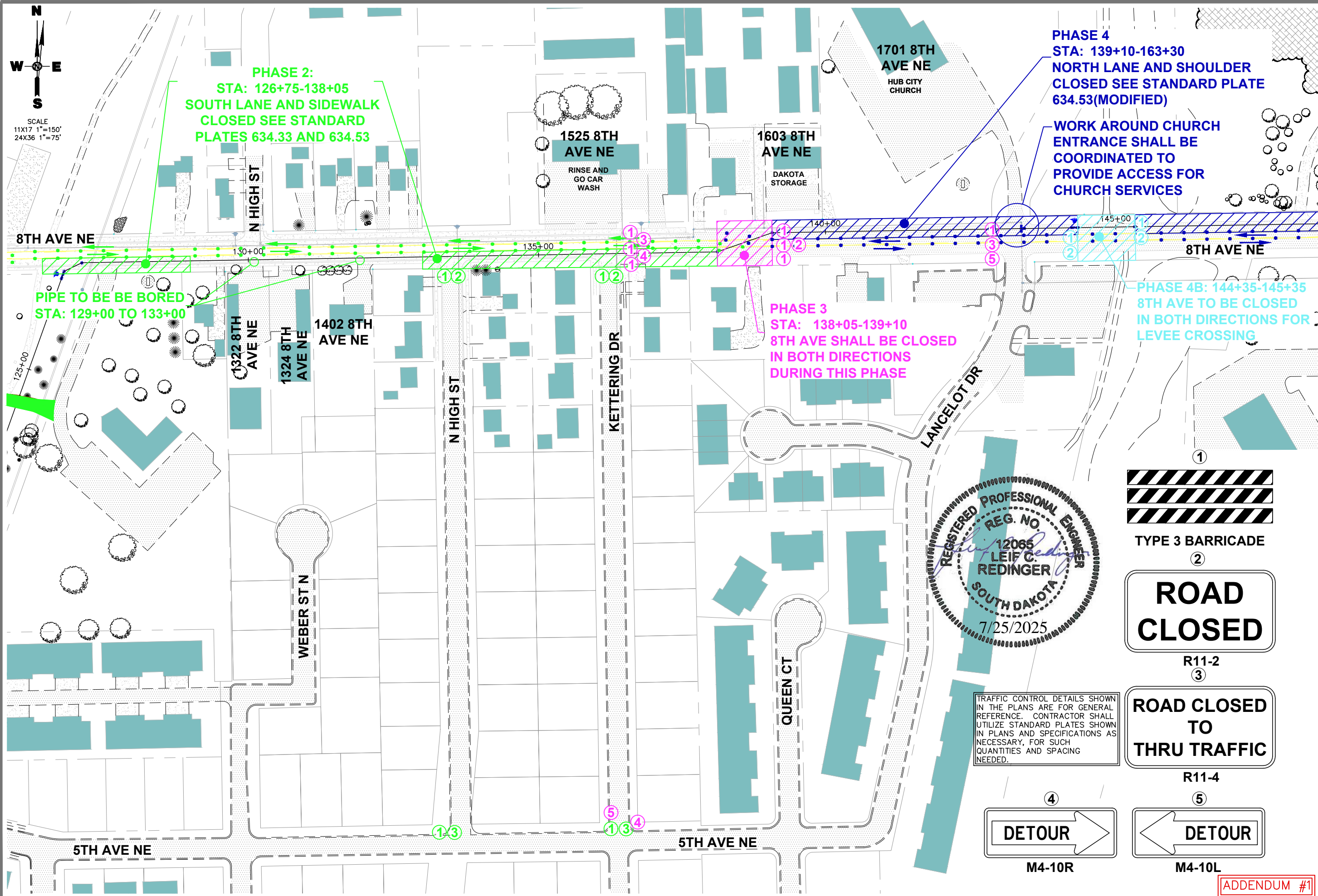
Proj. No: A-8542

Dwg. No: 8542-04

VP. No: TRAF200(2)

Date: 7/25/25

48
OF
74



PHASE 2:
STA: 126+75-138+05
SOUTH LANE AND SIDEWALK
CLOSED SEE STANDARD
PLATES 634.33 AND 634.53

PIPE TO BE BORED
STA: 129+00 TO 133+00

1525 8TH
AVE NE
RINSE AND
GO CAR
WASH

1603 8TH
AVE NE
DAKOTA
STORAGE

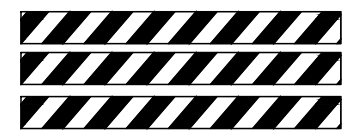
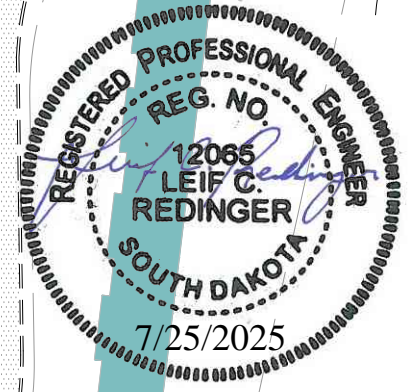
1701 8TH
AVE NE
HUB CITY
CHURCH

PHASE 4
STA: 139+10-163+30
NORTH LANE AND SHOULDER
CLOSED SEE STANDARD PLATE
634.53(MODIFIED)

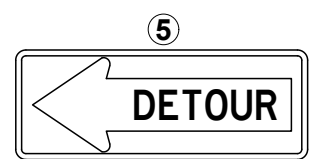
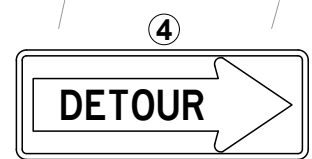
WORK AROUND CHURCH
ENTRANCE SHALL BE
COORDINATED TO
PROVIDE ACCESS FOR
CHURCH SERVICES

PHASE 3
STA: 138+05-139+10
8TH AVE SHALL BE CLOSED
IN BOTH DIRECTIONS
DURING THIS PHASE

PHASE 4B: 144+35-145+35
8TH AVE TO BE CLOSED
IN BOTH DIRECTIONS FOR
LEVEE CROSSING



TYPE 3 BARRICADE



TRAFFIC CONTROL DETAILS SHOWN
IN THE PLANS ARE FOR GENERAL
REFERENCE. CONTRACTOR SHALL
UTILIZE STANDARD PLATES SHOWN
IN PLANS AND SPECIFICATIONS AS
NECESSARY, FOR SUCH
QUANTITIES AND SPACING
NEEDED.

ADDENDUM #1

Date7/25

Revisions

No.1

ADDENDUM #1

I Hereby certify that this plan, specification, or report was prepared by me or under my direct supervision and that I am a duly Registered Professional Engineer under the law of the State of South Dakota. Registration No.

416 Production STN
P.O. Box 111,
Aberdeen, S.D. 57402
Phone: 605.225.1212,
Fax: 605.225.3189
Email:
bobb@helmsengineering.com

TRAFFIC CONTROL PLAN

ABERDEEN WATER TOWER
& TRANSMISSION LINE
ABERDEEN, SOUTH DAKOTA

Drawn By:TMO

Chk' By:LCR

Proj. No:A-8542

Dwg. No:8542-04

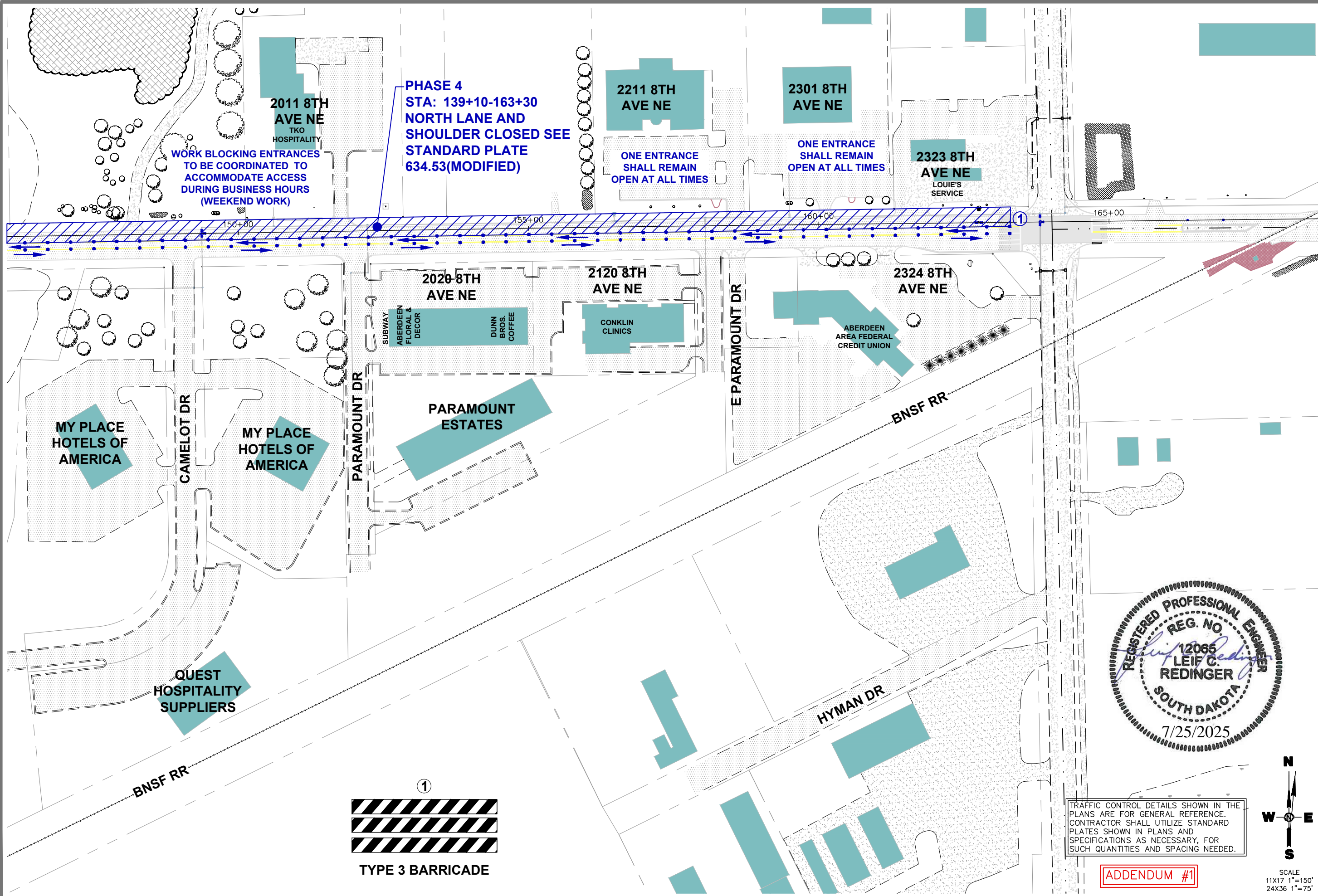
VP. No:TRAF200(2.5)

Date:7/25/25

49

OF

74



PHASE 4
STA: 139+10-163+30
NORTH LANE AND
SHOULDER CLOSED SEE
STANDARD PLATE
634.53(MODIFIED)

WORK BLOCKING ENTRANCES
TO BE COORDINATED TO
ACCOMMODATE ACCESS
DURING BUSINESS HOURS
(WEEKEND WORK)

2211 8TH
AVE NE

ONE ENTRANCE
SHALL REMAIN
OPEN AT ALL TIMES

2301 8TH
AVE NE

ONE ENTRANCE
SHALL REMAIN
OPEN AT ALL TIMES

2323 8TH
AVE NE
LOUIE'S
SERVICE

2020 8TH
AVE NE

2120 8TH
AVE NE

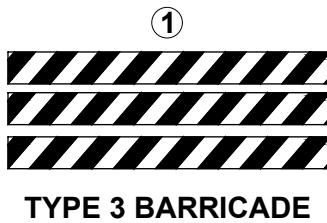
2324 8TH
AVE NE

MY PLACE
HOTELS OF
AMERICA

MY PLACE
HOTELS OF
AMERICA

PARAMOUNT
ESTATES

QUEST
HOSPITALITY
SUPPLIERS

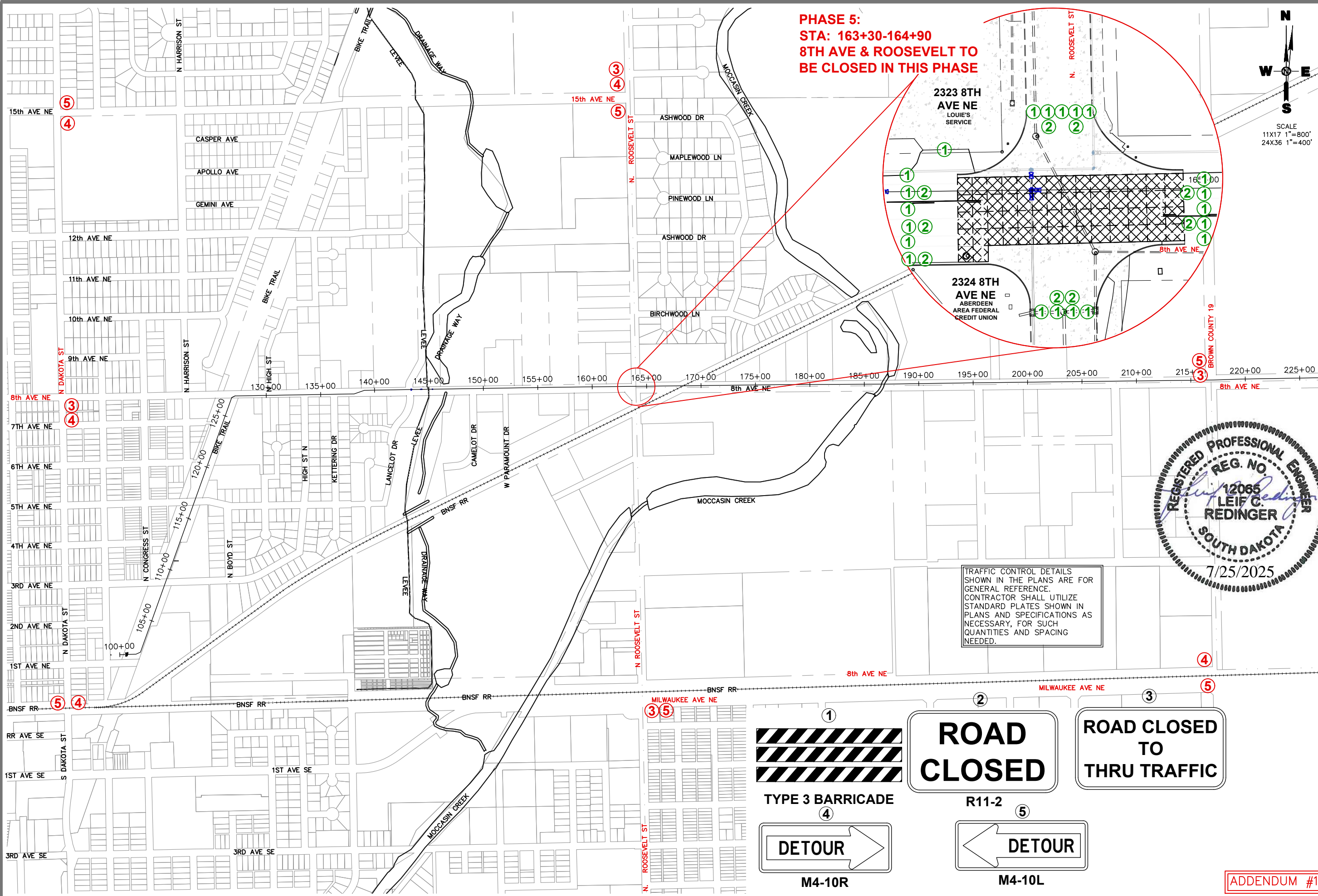


TRAFFIC CONTROL DETAILS SHOWN IN THE
PLANS ARE FOR GENERAL REFERENCE.
CONTRACTOR SHALL UTILIZE STANDARD
PLATES SHOWN IN PLANS AND
SPECIFICATIONS AS NECESSARY, FOR
SUCH QUANTITIES AND SPACING NEEDED.

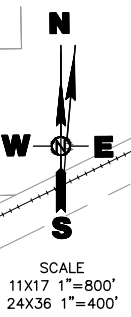
ADDENDUM #1



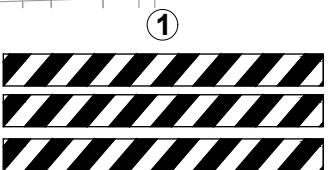
Date 7/25	
No.	Revisions
1	ADDENDUM #1
I Hereby certify that this plan, specification, or report was prepared by me or under my direct supervision and that I am a duly Registered Professional Engineer under the law of the State of South Dakota. Registration No.	
416 Production SHN P.O. Box 111, Aberdeen, S.D. 57402 Phone: 605.225.1212, Fax: 605.225.3189 Email: bobb@helmsengineering.com	
 CIVIL ENGINEERS & LAND SURVEYORS	
TRAFFIC CONTROL PLAN	
ABERDEEN WATER TOWER & TRANSMISSION LINE ABERDEEN, SOUTH DAKOTA	
Drawn By:	TMO
Chk' By:	LCR
Proj. No:	A-8542
Dwg. No:	8542-04
VP. No:	TRAF200(3)
Date:	7/25/25
50 OF 74	



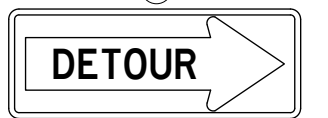
PHASE 5:
STA: 163+30-164+90
8TH AVE & ROOSEVELT TO
BE CLOSED IN THIS PHASE



TRAFFIC CONTROL DETAILS
SHOWN IN THE PLANS ARE FOR
GENERAL REFERENCE.
CONTRACTOR SHALL UTILIZE
STANDARD PLATES SHOWN IN
PLANS AND SPECIFICATIONS AS
NECESSARY, FOR SUCH
QUANTITIES AND SPACING
NEEDED.



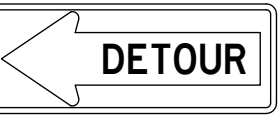
TYPE 3 BARRICADE



M4-10R



R11-2



M4-10L



ADDENDUM #1

Date
7/25

Revisions
1

ADDENDUM #1

I hereby certify that this plan, specification, or report was prepared by me or under my direct supervision and that I am a duly Registered Professional Engineer under the law of the State of South Dakota.
Registration No.

416 Production STN.
P.O. Box 111,
Aberdeen, S.D. 57402
Phone: 605.225.1212,
Fax: 605.225.3189
Email:
bobb@helmsengineering.com

TRAFFIC CONTROL PLAN

ABERDEEN WATER TOWER
& TRANSMISSION LINE
ABERDEEN, SOUTH DAKOTA

Drawn By: TMO
Chk' By: LCR
Proj. No: A-8542
Dwg. No: 8542-04
VP. No: TRAF600(2)
Date: 7/25/25

51

OF

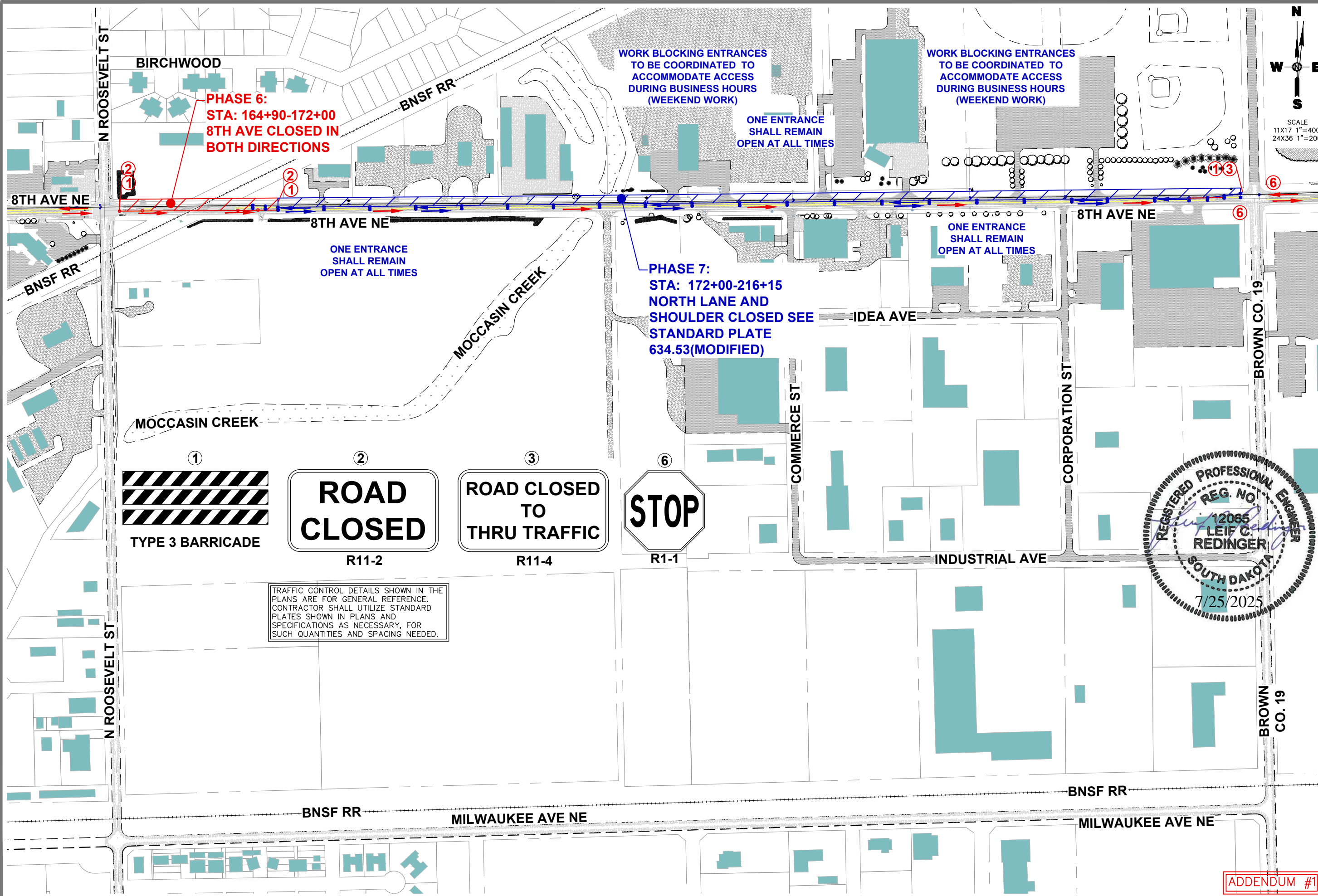
74

ADDENDUM #1

Helms
& ASSOCIATES

CIVIL ENGINEERS & LAND SURVEYORS

REGISTERED PROFESSIONAL ENGINEER
REG. NO. 12065
LEIF C. REDINGER
SOUTH DAKOTA
7/25/2025



North Arrow
N
W
E
S

SCALE
11X17 1"=400'
24X36 1"=200'

Revisions		Date
No.	Revisions	Date
1	ADDENDUM #1	7/25

I hereby certify that this plan, specification, or report was prepared by me or under my direct supervision and that I am a duly Registered Professional Engineer under the law of the State of South Dakota. Registration No.

416 Production ST N
P.O. Box 111,
Aberdeen, S.D. 57402
Phone: 605.225.1212,
Fax: 605.225.3189
Email: bobb@helmsengineering.com

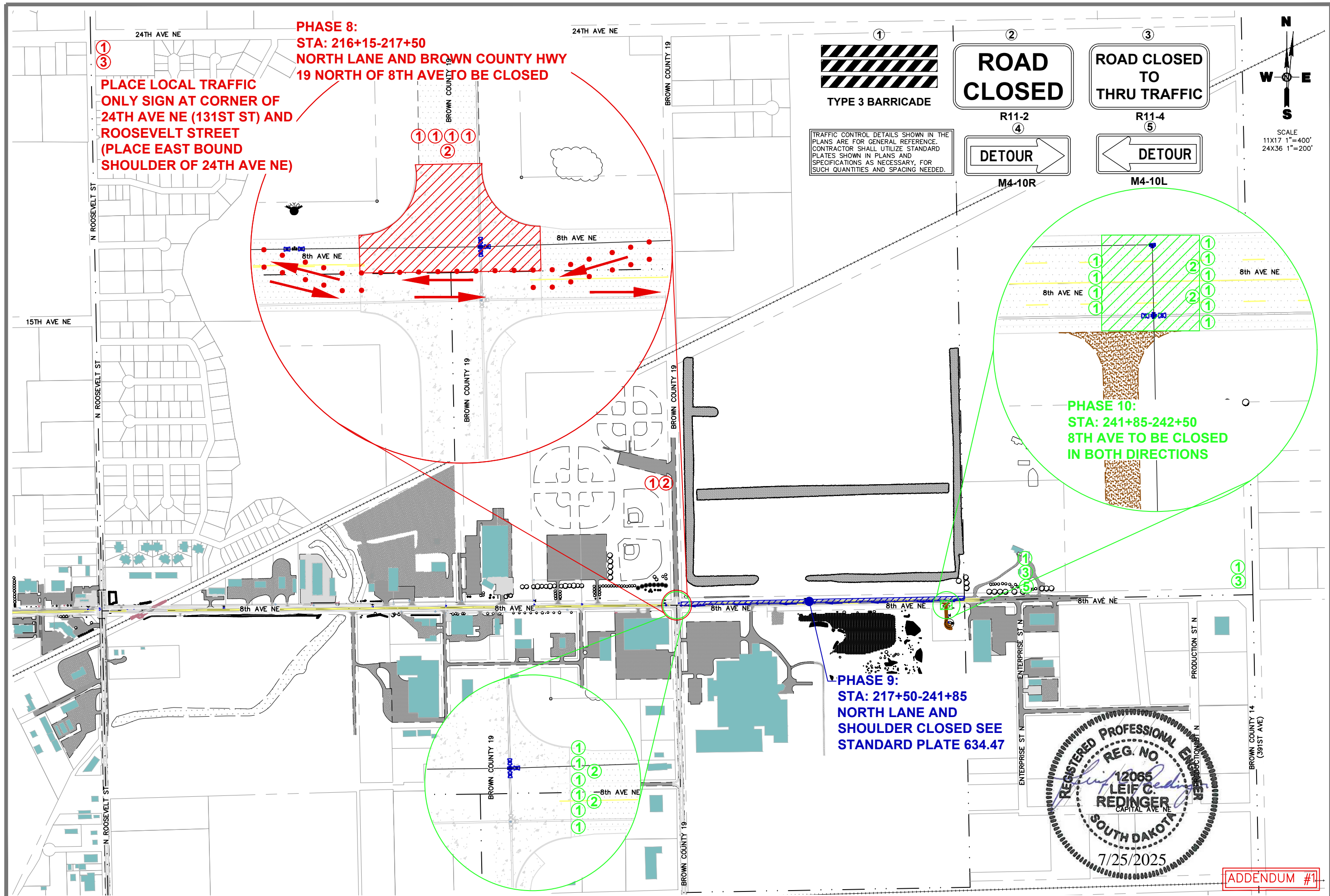
Helms & Associates
CIVIL ENGINEERS & LAND SURVEYORS

REGISTERED PROFESSIONAL ENGINEER
REG. NO. 12065
LEIF C. REDINGER
SOUTH DAKOTA
7/25/2025

TRAFFIC CONTROL DETAILS SHOWN IN THE PLANS ARE FOR GENERAL REFERENCE. CONTRACTOR SHALL UTILIZE STANDARD PLATES SHOWN IN PLANS AND SPECIFICATIONS AS NECESSARY, FOR SUCH QUANTITIES AND SPACING NEEDED.

TRAFFIC CONTROL PLAN
ABERDEEN WATER TOWER
& TRANSMISSION LINE
ABERDEEN, SOUTH DAKOTA

Drawn By:	TMO
Chk' By:	LCR
Proj. No:	A-8542
Dwg. No:	8542-04
VP. No:	TRAF400(1)
Date:	7/25/25



Date: 7/25

Revisions:
1
ADDENDUM #1

I Hereby certify that this plan, specification, or report was prepared by me or under my direct supervision and that I am a duly Registered Professional Engineer under the law of the State of South Dakota.
Registration No.

416 Production St N
P.O. Box 111,
Aberdeen, S.D. 57402
Phone: 605.225.1212,
Fax: 605.225.3189
Email: bobb@helmsengineering.com

Helms & Associates
CIVIL ENGINEERS & LAND SURVEYORS

TRAFFIC CONTROL PLAN

ABERDEEN WATER TOWER
& TRANSMISSION LINE
ABERDEEN, SOUTH DAKOTA

Drawn By: TMO
Chk' By: LCR
Proj. No: A-8542
Dwg. No: 8542-04
VP. No: TRAF400(2)
Date: 7/25/25

53
OF
74

ADDENDUM #1