

April 20, 2026

Re: Partial Parallel Taxiway Phase II
 Huron Regional Airport
 Huron, South Dakota
 AIP #3-46-0052-046-2026
 Helms #A-8709

Bid Opening: **April 23rd, 2026**
2:00 pm Local Time

ADDENDUM NUMBER 1

The following modifications are made to the plans and specifications for the Partial Parallel Taxiway Phase II Project, Huron Regional Airport.

Mobilization is limited to 10 percent of the total project cost.

Contract Documents and Technical Specifications

1. Technical Specifications, Item P-208 Aggregate Base Course, page 152. The following shall replace the Aggregate Base Material Requirements Table:

Aggregate Base Material Requirements

Material Test	Requirement	Standard
Coarse Aggregate		
Resistance to Degradation	Loss: 40% maximum	ASTM C131
Percentage of Fractured Particles	Minimum 30% by weight of particles with at least one fractured face	ASTM D5821
Fine Aggregate		
Liquid limit	Less than or equal to 25	ASTM D4318
Plasticity Index	Not more than six (6)	ASTM D4318

2. Technical Specifications, Item D-701 Pipe for Storm Drains and Culverts, page 215. The following are also acceptable pipe to be used for the project:

- ASTM C76 Standard Specification for Reinforced Concrete Culvert, Storm Drain, and Sewer Pipe

- ASTM F2881 Standard Specification for 12 to 60 in. (300 to 1500 mm) Polypropylene (PP) Dual Wall Pipe and Fittings for Non-Pressure Storm Sewer Applications

3. Technical Specifications, Item D-705 Pipe Underdrains for Airports, page 224. The following is the required gradation for the Porous Backfill:

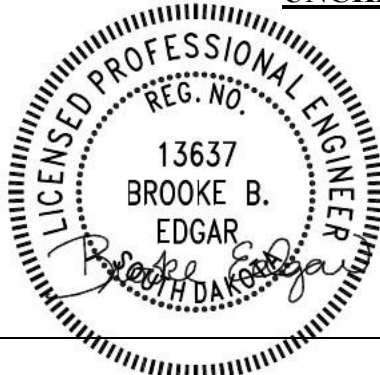
Sieve Designation (square openings)	Percentage by Weight Passing Sieves
	Porous Material No. 2
1-1/2 inch (37.5 mm)	100
1 inch (25.0 mm)	90 - 100
3/8 inch (9.5 mm)	25 - 60
No. 4 (4.75 mm)	5 - 40
No. 8 (2.36 mm)	0 - 20

4. Proposal, remove pages 435-437 and replace with the attached pages (3 pages).

The following quantities are adjusted for Bid Schedule A: 5. Unclassified Excavation, 16. Topsoiling (6" Nominal Depth),
 The following quantity is adjusted for Bid Schedule B: Remove and Replace ~~Asphalt~~ **Gravel** Golf Cart Path.

Please review Addendum No. 1 (attached) by DGR Engineering for Electrical changes.

**ALL OTHER ITEMS OF THE PLANS AND SPECIFICATIONS REMAIN
UNCHANGED**



BY: _____

PROJECT ENGINEER – HELMS & ASSOCIATES

Acknowledge receipt of the Addendum by inserting its number on the Bid Form. Failure to do so may subject bidder to disqualification. This Addendum forms a part of the Contract Documents. It modifies them as above.

**PARTIAL PARALLEL TAXIWAY PHASE II
HURON REGIONAL AIRPORT
AIP #3-46-0022-046-2026
A-8709**

Bid Schedule A - Partial Taxiway (Grading, Pavement Section, Electrical)

Item No.	Spec No.	Item Description	Quantity	Unit	Unit Price	Total Price
1	GP-105	Mobilization (Maximum 10% of Total Project Cost)	1	L.S.	\$	\$
2	C-100	Contractor Quality Control Plan	1	L.S.	\$	\$
3	S-100	Construction Safety Phasing Plan	1	L.S.	\$	\$
4	P-101	Concrete Pavement and Base Removal (6" Nominal Depth)	13,850	SqFt	\$	\$
5	P-152	Unclassified Excavation	16,105	CuYd	\$	\$
6	P-152	Disposal of Excess Material	8,716	CuYd	\$	\$
7	P-154	Subbase Course	2,597	CuYd	\$	\$
8	P-154	Geotextile Separator Fabric	3,463	SqYd	\$	\$
9	P-154	Geogrid	1,000	SqYd	\$	\$
10	P-208	Aggregate Base Course	525	CuYd	\$	\$
11	P-501	6" PCC Concrete Surfacing	3,151	SqYd	\$	\$
12	P-605	Silicone Joint Sealing	4,674	Ft	\$	\$
13	P-605	Silicone Joint Sealant w/ Expansion Board	179	Ft	\$	\$
14	P-620	Pavement Markings	1	L.S.	\$	\$
15	T-901	Seeding and Fertilizing	7	Acres	\$	\$
16	T-905	Topsoiling (6" Nominal Depth)	3,384	CuYd	\$	\$
17	T-908	Mulching	36,000	SqYd	\$	\$
18	TL-100	Field Laboratory	1	Each	\$	\$
19	Plans	High Flow Silt Fence	675	L.F.	\$	\$
20	Plans	Inlet Protection	8	Each	\$	\$
21	Plans	Flared End Protection	2	Each	\$	\$
22	01 51 26	Temporary Phasing Work, Electrical	1	L.S.	\$	\$
23	L-108	1/C No. 8 AWG, 5kV, L-824, Type C Cable, Installed in Conduit	2,710	Ft	\$	\$
24	L-108	1/C No. 4 AWG, 600V, THWN-2, Installed in Conduit	1,080	Ft	\$	\$
25	L-108	1/C No. 6 AWG, 600V (GND), THWN-2, Installed in Conduit	540	Ft	\$	\$

26	L-108	1/C No. 6 AWG, Solid, Bare Copper Counterpoise Wire, Including Trenching or Plowing, Including Ground Rods & Connections & Terminations	2,178	Ft	\$	\$
27	L-110	Remove & Salvage Existing Cable; Abandon Existing Conduit	1	L.S.	\$	\$
28	L-110	Trenching & Backfilling or Plowing for Conduit	3,078	Ft	\$	\$
29	L-110	Non-Encased, Electrical Conduit, 1-2 Inch, Type I, Sch. 40 PVC in Trench or SDR 13 HDPE Plowed	3,037	Ft	\$	\$
30	L-110	Sand-Encased, Electrical Conduit, 1-2 Inch, Type III, Sch. 80 PVC in Trench	41	Ft	\$	\$
31	L-110	Non-Encased, Electrical Conduit, 1-2 Inch, Type III, Sch. 80 PVC or SDR 11 HDPE Bored	98	Ft	\$	\$
32	L-110	Cable Markers	10	Each	\$	\$
33	L-115	Remove & Dispose of Existing Junction Box, PAPI Power Control Unit, & Concrete	2	Each	\$	\$
34	L-115	L-867B (12") Junction Box with Flat Circuit Etched Steel Cover	3	Each	\$	\$
35	L-125	Remove & Salvage Existing Taxiway Edge Light; Remove & Dispose of Existing Light Base & Transformer	30	Each	\$	\$
36	L-125	Remove & Salvage for Reinstallation Existing LED Airport Sign; Remove & Dispose of Existing Concrete Sign Pad & JB	1	Each	\$	\$
37	L-125	Remove & Salvage Existing LED Airport Sign; Remove & Dispose of Existing Concrete Sign Pad & JB	1	Each	\$	\$
38	L-125	Remove & Salvage Existing Unlighted Airport Sign	1	Each	\$	\$
39	L-125	L-861, 30-Inch Elevated, Mode 1, LED, Medium Intensity Runway Light (MIRL), White-Yellow Including Base Can	1	Each	\$	\$
40	L-125	L-861T, 24-Inch Elevated, Mode 1, LED, Medium Intensity Taxiway Light (MITL), Blue, Including Base Can	24	Each	\$	\$
41	L-125	L-861T Entrance/Exit Lights (2 Lights), 24-Inch Elevated, Mode 1, LED, Medium Intensity Taxiway Light (MITL), Blue, Including Base	1	Set	\$	\$
42	L-125	Reinstall Existing L-858L/R/Y Location/Mandatory/Direction LED Airfield Sign, Size 2, Style 2, Class 2, Mode 2, 2-Module Including	1	Each	\$	\$
43	L-125	Spare Parts	1	L.S.	\$	\$

Subtotal Base Bid Schedule A items 1 – 43 inclusive \$ _____

Written: _____ Dollars

All Items Furnished and Installed

Bid Schedule B - Storm Sewer and Underdrain Piping

Item No.	Spec No.	Item Description	Quantity	Unit	Unit Price	Total Price
1	D-701	24" RCP	972	L.F.	\$	\$
2	D-701	24" RCP Flared End	1	Each	\$	\$
3	D-701	15" RCP	248	L.F.	\$	\$
4	D-705	4" Perforated Underdrain Piping	1,549	L.F.	\$	\$
5	D-705	4" Solid Underdrain Piping	125	L.F.	\$	\$
6	D-705	Underdrain Cleanout	6	Each	\$	\$
8	D-751	2'x3' Type B Inlet w/ Concrete Apron	4	Each	\$	\$
9	D-751	4'x4' Type B Inlet w/ Concrete Apron	2	Each	\$	\$
10	Plans	Remove and Replace Gravel Golf Cart Path	23	SqYd	\$	\$
11	Plans	Remove and Dispose Storm Sewer Pipe	473	L.F.	\$	\$
12	Plans	Remove and Dispose Existing Storm Sewer Inlet	4	Each	\$	\$
13	Plans	Remove and Reset Perimeter Fence	20	L.F.	\$	\$
14	Plans	Remove and Dispose of Storm Sewer Flared End	1	Each	\$	\$
15	Plans	Cap and Abandon Storm Pipe	1	L.S.	\$	\$
16	Pans	Remove and Dispose 12" CPP Storm	48	L.F.	\$	\$

Subtotal Base Bid Schedule B items 1 – 16 inclusive \$ _____

Written: _____ Dollars

All Items Furnished and Installed

Total Base Bid Schedule A and B, all items inclusive \$ _____

Written: _____ Dollars

All Items Furnished and Installed

DATE: April 20, 2026

PROJECT: Partial Parallel Taxiway Phase II
Huron Regional Airport (HON)
Huron, South Dakota
DGR Project No. 732603

LETTING DATE AND LOCATION: April 23, 2026, 2:00 PM
Huron Regional Airport
426 15th Street
Huron, SD 57350

ADDENDUM NO. 1

This Addendum forms a part of the Contract Documents and modifies the Contract Documents, Specifications, and Drawings as described below. The Bidder shall acknowledge receipt of this Addendum in the space provided on the Bid Form as failure to do so may subject the bid to disqualification.

Project Manual:


1. Technical Specifications. Replace the following technical specifications with the attached. Only the bid item descriptions at the end of each section changed to reflect the new bid items.
 - a. L-108
 - b. L-110
 - c. L-115

Drawings:

1. Plan Sheets. Replace Plan Sheet E5 and E6 with the attached.

This addendum shall become a legal and binding part of the contract documents. All Bidders shall agree to accept the revisions indicated and prepare proposals in accordance therewith.

DGR Engineering

By 
Brian Meyer, PE



DGR Engineering — 1300 S Highline Avenue — Sioux Falls, SD 57110
phone: 605.339.4157 — dgr.com

Item L-108 Underground Power Cable for Airports

DESCRIPTION

108-1.1 This item shall consist of furnishing and installing power cables that are direct buried and furnishing and/or installing power cables within conduit or duct banks per these specifications at the locations shown on the plans. It includes excavation and backfill of trench for direct-buried cables only. Also included are the installation of counterpoise wires, ground wires, ground rods and connections, cable splicing, cable marking, cable testing, and all incidentals necessary to place the cable in operating condition as a completed unit to the satisfaction of the RPR. This item shall not include the installation of duct banks or conduit, trenching and backfilling for duct banks or conduit, or furnishing or installation of cable for FAA owned/operated facilities.

EQUIPMENT AND MATERIALS

108-2.1 General.

a. Airport lighting equipment and materials covered by advisory circulars (AC) shall be approved under the *Airport Lighting Equipment Certification Program* per AC 150/5345-53, current version.

b. All other equipment and materials covered by other referenced specifications shall be subject to acceptance through manufacturer's certification of compliance with the applicable specification, when requested by the RPR.

c. Manufacturer's certifications shall not relieve the Contractor of the responsibility to provide materials per these specifications. Materials supplied and/or installed that do not comply with these specifications shall be removed (when directed by the RPR) and replaced with materials that comply with these specifications at the Contractor's cost.

d. All materials and equipment used to construct this item shall be submitted to the RPR for approval prior to ordering the equipment. Submittals consisting of marked catalog sheets or shop drawings shall be provided. Submittal data shall be presented in a clear, precise and thorough manner. Original catalog sheets are preferred. Photocopies are acceptable provided they are as good a quality as the original. Clearly and boldly mark each copy to identify products or models applicable to this project. Indicate all optional equipment and delete any non-pertinent data. Submittals for components of electrical equipment and systems shall identify the equipment to which they apply on each submittal sheet. Markings shall be made bold and clear with arrows or circles (highlighting is not acceptable). The Contractor is solely responsible for delays in the project that may accrue directly or indirectly from late submissions or resubmissions of submittals.

e. The data submitted shall be sufficient, in the opinion of the RPR, to determine compliance with the plans and specifications. The Contractor's submittals shall electronically submitted in pdf format. The RPR reserves the right to reject any and all equipment, materials, or procedures that do not meet the system design and the standards and codes, specified in this document.

f. All equipment and materials furnished and installed under this section shall be guaranteed against defects in materials and workmanship for at least twelve (12) months from the date of final acceptance by the Owner. The defective materials and/or equipment shall be repaired or replaced, at the Owner's discretion, with no additional cost to the Owner. The Contractor shall maintain a minimum insulation

resistance in accordance with paragraph 108-3.10e with isolation transformers connected in new circuits and new segments of existing circuits through the end of the contract warranty period when tested in accordance with AC 150/5340-26, *Maintenance Airport Visual Aid Facilities*, paragraph 5.1.3.1, Insulation Resistance Test.

108-2.2 Cable. Underground cable for airfield lighting facilities (runway and taxiway lights and signs) shall conform to the requirements of AC 150/5345-7, *Specification for L-824 Underground Electrical Cable for Airport Lighting Circuits* latest edition. Conductors for use on 6.6 ampere primary airfield lighting series circuits shall be single conductor, seven strand, #8 American wire gauge (AWG), L-824 Type C, 5,000 volts, non-shielded, with cross-linked polyethylene insulation. Conductors for use on 20 ampere primary airfield lighting series circuits shall be single conductor, seven strand, #6 AWG, L-824 Type C, 5,000 volts, non-shielded, with cross-linked polyethylene insulation. L-824 conductors for use on the L-830 secondary of airfield lighting series circuits shall be sized in accordance with the manufacturer's recommendations. All other conductors shall comply with FAA and National Electric Code (NEC) requirements. Conductor sizes noted above shall not apply to leads furnished by manufacturers on airfield lighting transformers and fixtures.

Wire for electrical circuits up to 600 volts shall comply with Specification L-824 and/or Commercial Item Description A-A-59544A and shall be type THWN-2, 75°C for installation in conduit and RHW-2, 75°C for direct burial installations. Conductors for parallel (voltage) circuits shall be type and size and installed in accordance with NFPA-70, *National Electrical Code*.

Unless noted otherwise, all 600-volt and less non-airfield lighting conductor sizes are based on a 75°C, THWN-2, 600-volt insulation, copper conductors, not more than three single insulated conductors, in raceway, in free air. The conduit/duct sizes are based on the use of THWN-2, 600-volt insulated conductors. The Contractor shall make the necessary increase in conduit/duct sizes for other types of wire insulation. In no case shall the conduit/duct size be reduced. The minimum power circuit wire size shall be #12 AWG.

Conductor sizes may have been adjusted due to voltage drop or other engineering considerations. Equipment provided by the Contractor shall be capable of accepting the quantity and sizes of conductors shown in the Contract Documents. All conductors, pigtails, cable step-down adapters, cable step-up adapters, terminal blocks and splicing materials necessary to complete the cable termination/splice shall be considered incidental to the respective pay items provided.

Cable type, size, number of conductors, strand and service voltage shall be as specified in the Contract Document.

108-2.3 Bare copper wire (counterpoise, bare copper wire ground and ground rods). Wire for counterpoise or ground installations for airfield lighting systems shall be No. 6 AWG bare solid copper wire for counterpoise and/or No. 6 AWG insulated stranded for grounding bond wire per ASTM B3 and ASTM B8, and shall be bare copper wire. For voltage powered circuits, the equipment grounding conductor shall comply with NEC Article 250.

Ground rods shall be one-piece, pointed, copper bonded with minimum 10 mil. plated thickness. The ground rods shall be of the length and diameter specified on the plans, but in no case be less than 10 feet long and 3/4 inch in diameter.

108-2.4 Cable connections. In-line connections or splices of underground primary cables shall be of the type called for on the plans, and shall be one of the types listed below. No separate payment will be made for cable connections.

a. The cast splice. A cast splice, employing a plastic mold and using epoxy resin equivalent to that manufactured by 3M™ Company, "Scotchcast" Kit No. 82-B, or an approved equivalent, used for potting the splice is acceptable.

b. The field-attached plug-in splice. Field attached plug-in splices shall be installed as shown on the plans. The Contractor shall determine the outside diameter of the cable to be spliced and furnish appropriately sized connector kits and/or adapters. Tape or heat shrink tubing with integral sealant shall be in accordance with the manufacturer's requirements. Primary Connector Kits manufactured by Amerace, "Super Kit", Integro "Complete Kit", or approved equal is acceptable.

c. The factory-molded plug-in splice. Specification for L-823 Connectors, Factory-Molded to Individual Conductors, is acceptable.

d. The taped or heat-shrink splice. Taped splices employing field-applied rubber, or synthetic rubber tape covered with plastic tape is acceptable. The rubber tape should meet the requirements of ASTM D4388 and the plastic tape should comply with Military Specification MIL-I-24391 or Commercial Item Description A-A-55809. Heat shrinkable tubing shall be heavy-wall, self-sealing tubing rated for the voltage of the wire being spliced and suitable for direct-buried installations. The tubing shall be factory coated with a thermoplastic adhesive-sealant that will adhere to the insulation of the wire being spliced forming a moisture- and dirt-proof seal. Additionally, heat shrinkable tubing for multi-conductor cables, shielded cables, and armored cables shall be factory kits that are designed for the application. Heat shrinkable tubing and tubing kits shall be manufactured by Tyco Electronics/ Raychem Corporation, Energy Division, or approved equivalent.

In all the above cases, connections of cable conductors shall be made using crimp connectors using a crimping tool designed to make a complete crimp before the tool can be removed. All L-823/L-824 splices and terminations shall be made per the manufacturer's recommendations and listings.

All connections of counterpoise, grounding conductors and ground rods shall be made by the exothermic process or approved equivalent, except that a light base ground clamp connector shall be used for attachment to the light base. All exothermic connections shall be made per the manufacturer's recommendations and listings.

108-2.5 Splicer qualifications. Every airfield lighting cable splicer shall be qualified in making airport cable splices and terminations on cables rated at or above 5,000 volts AC. The Contractor shall submit to the RPR proof of the qualifications of each proposed cable splicer for the airport cable type and voltage level to be worked on. Cable splicing/terminating personnel shall have a minimum of three (3) years continuous experience in terminating/splicing medium voltage cable.

108-2.6 Concrete. Concrete shall be proportioned, placed, and cured per SDDOT Specification Section 462, Miscellaneous Concrete, Class M.

108-2.7 Flowable backfill. Not permitted.

108-2.8 Cable identification tags. Cable identification tags shall be made from a non-corrosive material with the circuit identification stamped or etched onto the tag. The tags shall be of the type as detailed on the plans.

108-2.9 Tape. Electrical tapes shall be Scotch™ Electrical Tapes –Scotch™ 88 (1-1/2 inch (38 mm) wide) and Scotch™ 130C® linerless rubber splicing tape (2-inch (50 mm) wide), as manufactured by the Minnesota Mining and Manufacturing Company (3M™), or an approved equivalent.

108-2.10 Electrical coating. Electrical coating shall be Scotchkote™ as manufactured by 3M™, or an approved equivalent.

108-2.11 Existing circuits. Whenever the scope of work requires connection to an existing circuit, the existing circuit's insulation resistance shall be tested, in the presence of the RPR. The test shall be performed per this item and prior to any activity that will affect the respective circuit. The Contractor shall record the results on forms acceptable to the RPR. When the work affecting the circuit is complete, the circuit's insulation resistance shall be checked again, in the presence of the RPR. The Contractor shall record the results on forms acceptable to the RPR. The second reading shall be equal to or greater than the

first reading or the Contractor shall make the necessary repairs to the existing circuit to bring the second reading above the first reading. All repair costs including a complete replacement of the L-823 connectors, L-830 transformers and L-824 cable, if necessary, shall be borne by the Contractor. All test results shall be submitted in the Operation and Maintenance (O&M) Manual.

108-2.12 Detectable warning tape. Plastic, detectable, American Public Works Association (APWA) Red (electrical power lines, cables, conduit and lighting cable) with continuous legend tape shall be polyethylene film with a metalized foil core and shall be 3-6 inches (75-150 mm) wide. Detectable tape is incidental to the respective bid item. Detectable warning tape for communication cables shall be orange. Detectable warning tape color code shall comply with the APWA Uniform Color Code.

CONSTRUCTION METHODS

108-3.1 General. The Contractor shall install the specified cable at the approximate locations indicated on the plans. Unless otherwise shown on the plans, all cable required to cross under pavements expected to carry aircraft loads shall be installed in concrete encased duct banks. Cable shall be run without splices, from fixture to fixture.

Cable connections between lights will be permitted only at the light locations for connecting the underground cable to the primary leads of the individual isolation transformers. The Contractor shall be responsible for providing cable in continuous lengths for home runs or other long cable runs without connections unless otherwise authorized in writing by the RPR or shown on the plans.

In addition to connectors being installed at individual isolation transformers, L-823 cable connectors for maintenance and test points shall be installed at locations shown on the plans. Cable circuit identification markers shall be installed on both sides of the L-823 connectors installed and on both sides of slack loops where a future connector would be installed.

Provide not less than 3 feet (1 m) of cable slack on each side of all connections, isolation transformers, light units, and at points where cable is connected to field equipment. Where provisions must be made for testing or for future above grade connections, provide enough slack to allow the cable to be extended at least one foot (30 cm) vertically above the top of the access structure. This requirement also applies where primary cable passes through empty light bases, junction boxes, and access structures to allow for future connections, or as designated by the RPR.

Primary airfield lighting cables installed shall have cable circuit identification markers attached on both sides of each L-823 connector and on each airport lighting cable entering or leaving cable access points, such as manholes, hand holes, pull boxes, junction boxes, etc. Markers shall be of sufficient length for imprinting the cable circuit identification legend on one line, using letters not less than 1/4 inch (6 mm) in size. The cable circuit identification shall match the circuits noted on the construction plans.

108-3.2 Installation in duct banks or conduits. This item includes the installation of the cable in duct banks or conduit per the following paragraphs. The maximum number and voltage ratings of cables installed in each single duct or conduit, and the current-carrying capacity of each cable shall be per the latest version of the National Electric Code, or the code of the local agency or authority having jurisdiction.

The Contractor shall make no connections or splices of any kind in cables installed in conduits or duct banks.

Unless otherwise designated in the plans, where ducts are in tiers, use the lowest ducts to receive the cable first, with spare ducts left in the upper levels. Check duct routes prior to construction to obtain assurance that the shortest routes are selected and that any potential interference is avoided.

Duct banks or conduits shall be installed as a separate item per Item L-110, Airport Underground Electrical Duct Banks and Conduit. The Contractor shall run a mandrel through duct banks or conduit prior to installation of cable to ensure that the duct bank or conduit is open, continuous and clear of debris. The mandrel size shall be compatible with the conduit size. The Contractor shall swab out all conduits/ducts and clean light bases, manholes, etc., interiors immediately prior to pulling cable. Once cleaned and swabbed, the light bases and all accessible points of entry to the duct/conduit system shall be kept closed except when installing cables. Cleaning of ducts, light bases, manholes, etc., is incidental to the pay item of the item being cleaned. All raceway systems left open, after initial cleaning, for any reason shall be re-cleaned at the Contractor's expense. The Contractor shall verify existing ducts proposed for use in this project as clear and open. The Contractor shall notify the RPR of any blockage in the existing ducts.

The cable shall be installed in a manner that prevents harmful stretching of the conductor, damage to the insulation, or damage to the outer protective covering. The ends of all cables shall be sealed with moisture-seal tape providing moisture-tight mechanical protection with minimum bulk, or alternately, heat shrinkable tubing before pulling into the conduit and it shall be left sealed until connections are made. Where more than one cable is to be installed in a conduit, all cable shall be pulled in the conduit at the same time. The pulling of a cable through duct banks or conduits may be accomplished by hand winch or power winch with the use of cable grips or pulling eyes. Maximum pulling tensions shall not exceed the cable manufacturer's recommendations. A non-hardening cable-pulling lubricant recommended for the type of cable being installed shall be used where required.

The Contractor shall submit the recommended pulling tension values to the RPR prior to any cable installation. If required by the RPR, pulling tension values for cable pulls shall be monitored by a dynamometer in the presence of the RPR. Cable pull tensions shall be recorded by the Contractor and reviewed by the RPR. Cables exceeding the maximum allowable pulling tension values shall be removed and replaced by the Contractor at the Contractor's expense.

The manufacturer's minimum bend radius or NEC requirements (whichever is more restrictive) shall apply. Cable installation, handling and storage shall be per manufacturer's recommendations. During cold weather, particular attention shall be paid to the manufacturer's minimum installation temperature. Cable shall not be installed when the temperature is at or below the manufacturer's minimum installation temperature. At the Contractor's option, the Contractor may submit a plan, for review by the RPR, for heated storage of the cable and maintenance of an acceptable cable temperature during installation when temperatures are below the manufacturer's minimum cable installation temperature.

Cable shall not be dragged across base can or manhole edges, pavement or earth. When cable must be coiled, lay cable out on a canvas tarp or use other appropriate means to prevent abrasion to the cable jacket.

108-3.3 Installation of direct-buried cable in trenches. Unless otherwise specified, the Contractor shall not use a cable plow for installing the cable. Cable shall be unreeled uniformly in place alongside or in the trench and shall be carefully placed along the bottom of the trench. The cable shall not be unreeled and pulled into the trench from one end. Slack cable sufficient to provide strain relief shall be placed in the trench in a series of S curves. Sharp bends or kinks in the cable shall not be permitted.

Where cables must cross over each other, a minimum of 3 inches (75 mm) vertical displacement shall be provided with the topmost cable depth at or below the minimum required depth below finished grade.

a. Trenching. Where turf is well established and the sod can be removed, it shall be carefully stripped and properly stored. Trenches for cables may be excavated manually or with mechanical trenching equipment. Walls of trenches shall be essentially vertical so that a minimum of surface is disturbed. Graders shall not be used to excavate the trench with their blades. The bottom surface of trenches shall be essentially smooth and free from coarse aggregate. Unless otherwise specified, cable

trenches shall be excavated to a minimum depth of 18 inches (0.5 m) below finished grade per NEC Table 300.5, except as follows:

- When off the airport or crossing under a roadway or driveway, the minimum depth shall be 36 inches (91 cm) unless otherwise specified.
- Minimum cable depth when crossing under a railroad track, shall be 42 inches (1 m) unless otherwise specified.

The Contractor shall excavate all cable trenches to a width not less than 6 inches (150 mm). Unless otherwise specified on the plans, all cables in the same location and running in the same general direction shall be installed in the same trench.

When rock is encountered, the rock shall be removed to a depth of at least 3 inches (75 mm) below the required cable depth and it shall be replaced with bedding material of earth or sand containing no mineral aggregate particles that would be retained on a 1/4-inch (6.3 mm) sieve. Flowable backfill material may not alternatively be used.

Duct bank or conduit markers temporarily removed for trench excavations shall be replaced as required.

It is the Contractor's responsibility to locate existing utilities within the work area prior to excavation. Where existing active cables cross proposed installations, the Contractor shall ensure that these cables are adequately protected. Where crossings are unavoidable, no splices will be allowed in the existing cables, except as specified on the plans. Installation of new cable where such crossings must occur shall proceed as follows:

(1) Existing cables shall be located manually. Unearthed cables shall be inspected to assure absolutely no damage has occurred.

(2) Trenching, etc., in cable areas shall then proceed, with approval of the RPR, with care taken to minimize possible damage or disruption of existing cable, including careful backfilling in area of cable.

In the event that any previously identified cable is damaged during the course of construction, the Contractor shall be responsible for the complete repair or replacement.

b. Backfilling. After the cable has been installed, the trench shall be backfilled. The first layer of backfill in the trench shall encompass all cables ; be 3 inches (75 mm) deep, loose measurement; and shall be either earth or sand containing no mineral aggregate particles that would be retained on a 1/4-inch (6.3 mm) sieve. This layer shall not be compacted. The second layer shall be 5 inches (125 mm) deep, loose measurement, and shall contain no particles that would be retained on a one inch (25.0 mm) sieve. The remaining third and subsequent layers of backfill shall not exceed 8 inches (20 cm) of loose measurement and be excavated or imported material and shall not contain stone or aggregate larger than 4 inches (100 mm) maximum diameter.

The second and subsequent layers shall be thoroughly tamped and compacted to at least the density of the adjacent material. If the cable is to be installed in locations or areas where other compaction requirements are specified (under pavements, embankments, etc.) the backfill compaction shall be per Item P-152.

Trenches shall not contain pools of water during backfilling operations. The trench shall be completely backfilled and tamped level with the adjacent surface, except that when turf is to be established over the trench, the backfilling shall be stopped at an appropriate depth consistent with the type of turfing operation to be accommodated. A proper allowance for settlement shall also be provided. Any excess excavated material shall be removed and disposed of per the plans and specifications.

Underground electrical warning (caution) tape shall be installed in the trench above all direct-buried cable. Contractor shall submit a sample of the proposed warning tape for acceptance by the RPR. If not

shown on the plans, the warning tape shall be located 6 inches (150 mm) above the direct-buried cable or the counterpoise wire if present. A 3-6 inch (75 - 150 mm) wide polyethylene film detectable tape, with a metalized foil core, shall be installed above all direct buried cable or counterpoise. The tape shall be of the color and have a continuous legend as indicated on the plans. The tape shall be installed 8 inches (200 mm) minimum below finished grade.

c. Restoration. Following restoration of all trenching near airport movement surfaces, the Contractor shall visually inspect the area for foreign object debris (FOD) and remove any that is found. Where soil and sod has been removed, it shall be replaced as soon as possible after the backfilling is completed. All areas disturbed by work shall be restored to its original condition. The restoration shall include the topsoiling, fertilizing, seeding, and mulching as shown on the plans. The Contractor shall be held responsible for maintaining all disturbed surfaces and replacements until final acceptance. When trenching is through paved areas, restoration shall be equal to existing conditions. If the cable is to be installed in locations or areas where other compaction requirements are specified (under pavements, embankments, etc.) the backfill compaction shall be per Item P-152. Restoration shall be considered incidental to the pay item of which it is a component part.

108-3.4 Cable markers for direct-buried cable. The location of direct buried circuits shall be marked by a concrete slab marker, 2 feet (60 cm) square and 4-6 inch (10 - 15 cm) thick, extending approximately one inch (25 mm) above the surface. Each cable run from a line of lights and signs to the equipment vault shall be marked at approximately every 200 feet (61 m) along the cable run, with an additional marker at each change of direction of cable run. All other direct-buried cable shall be marked in the same manner. Cable markers shall be installed directly above the cable. The Contractor shall impress the word "CABLE" and directional arrows on each cable marking slab. The letters shall be approximately 4 inches (100 mm) high and 3 inches (75 mm) wide, with width of stroke 1/2 inch (12 mm) and 1/4 inch (6 mm) deep. Stencils shall be used for cable marker lettering; no hand lettering shall be permitted.

At the location of each underground cable connection/splice, except at lighting units, or isolation transformers, a concrete marker slab shall be installed to mark the location of the connection/splice. The Contractor shall impress the word "SPLICE" on each slab. The Contractor also shall impress additional circuit identification symbols on each slab as directed by the RPR. All cable markers and splice markers shall be painted international orange. Paint shall be specifically manufactured for uncured exterior concrete. After placement, all cable or splice markers shall be given one coat of high-visibility aviation orange paint as approved by the RPR.

108-3.5 Splicing. Connections of the type shown on the plans shall be made by experienced personnel regularly engaged in this type of work and shall be made as follows:

a. Cast splices. These shall be made by using crimp connectors for jointing conductors. Molds shall be assembled, and the compound shall be mixed and poured per the manufacturer's instructions and to the satisfaction of the RPR.

b. Field-attached plug-in splices. These shall be assembled per the manufacturer's instructions. These splices shall be made by plugging directly into mating connectors. The joint where the connectors come together shall be finished by one of the following methods: (1) wrapped with at least one layer of rubber or synthetic rubber tape and one layer of plastic tape, one-half lapped, extending at least 1-1/2 inches (38 mm) on each side of the joint (2) Covered with heat shrinkable tubing with integral sealant extending at least 1-1/2 inches (38 mm) on each side of the joint or (3) On connector kits equipped with water seal flap; roll-over water seal flap to sealing position on mating connector.

c. Factory-molded plug-in splices. These shall be made by plugging directly into mating connectors. The joint where the connectors come together shall be finished by one of the following methods: (1) Wrapped with at least one layer of rubber or synthetic rubber tape and one layer of plastic tape, one-half lapped, extending at least 1-1/2 inches (38 mm) on each side of the joint. (2) Covered with heat

shrinkable tubing with integral sealant extending at least 1-1/2 inches (38 mm) on each side of the joint. or (3) On connector kits so equipped with water seal flap; roll-over water seal flap to sealing position on mating connector.

d. Taped or heat-shrink splices. A taped splice shall be made in the following manner:

Bring the cables to their final position and cut so that the conductors will butt. Remove insulation and jacket allowing for bare conductor of proper length to fit compression sleeve connector with 1/4 inch (6 mm) of bare conductor on each side of the connector. Prior to splicing, the two ends of the cable insulation shall be penciled using a tool designed specifically for this purpose and for cable size and type. Do not use emery paper on splicing operation since it contains metallic particles. The copper conductors shall be thoroughly cleaned. Join the conductors by inserting them equidistant into the compression connection sleeve. Crimp conductors firmly in place with crimping tool that requires a complete crimp before tool can be removed. Test the crimped connection by pulling on the cable. Scrape the insulation to assure that the entire surface over which the tape will be applied (plus 3 inches (75 mm) on each end) is clean. After scraping, wipe the entire area with a clean lint-free cloth. Do not use solvents.

Apply high-voltage rubber tape one-half lapped over bare conductor. This tape should be tensioned as recommended by the manufacturer. Voids in the connector area may be eliminated by highly elongating the tape, stretching it just short of its breaking point. The manufacturer's recommendation for stretching tape during splicing shall be followed. Always attempt to exactly half-lap to produce a uniform buildup. Continue buildup to 1-1/2 times cable diameter over the body of the splice with ends tapered a distance of approximately one inch (25 mm) over the original jacket. Cover rubber tape with two layers of vinyl pressure-sensitive tape one-half lapped. Do not use glyptol or lacquer over vinyl tape as they react as solvents to the tape. No further cable covering or splice boxes are required.

Heat shrinkable tubing shall be installed following manufacturer's instructions. Direct flame heating shall not be permitted unless recommended by the manufacturer. Cable surfaces within the limits of the heat-shrink application shall be clean and free of contaminants prior to application.

e. Assembly. Surfaces of equipment or conductors being terminated or connected shall be prepared in accordance with industry standard practice and manufacturer's recommendations. All surfaces to be connected shall be thoroughly cleaned to remove all dirt, grease, oxides, nonconductive films, or other foreign material. Paints and other nonconductive coatings shall be removed to expose base metal. Clean all surfaces at least 1/4 inch (6.4 mm) beyond all sides of the larger bonded area on all mating surfaces. Use a joint compound suitable for the materials used in the connection. Repair painted/coated surface to original condition after completing the connection.

108-3.6 Bare counterpoise wire installation for lightning protection and grounding. If shown on the plans or included in the job specifications, bare solid #6 AWG copper counterpoise wire shall be installed for lightning protection of the underground cables. The RPR shall select one of two methods of lightning protection for the airfield lighting circuit based upon sound engineering practice and lightning strike density.

a. Equipotential. Not used.

b. Isolation – used in areas where lightning strikes are not common. Counterpoise size is selected by the RPR. The isolation method is an alternate method for use only with edge lights installed in turf and stabilized soils and raceways installed parallel to and adjacent to the edge of the pavement. NFPA 780 uses 15 feet to define "adjacent to".

The counterpoise conductor shall be installed halfway between the pavement edge and the light base, mounting stake, raceway, or cable being protected.

The counterpoise conductor shall be installed 8 inches (203 mm) minimum below grade. The counterpoise is not connected to the light base or mounting stake. An additional grounding electrode is

required at each light base or mounting stake. The grounding electrode is bonded to the light base or mounting stake with a #6 AWG solid copper conductor.

See AC 150/5340-30, *Design and Installation Details for Airport Visual Aids* and NFPA 780, *Standard for the Installation of Lightning Protection Systems*, Chapter 11, for a detailed description of the Isolation Method of lightning protection.

c. Common Installation requirements. When a metallic light base is used, the grounding electrode shall be bonded to the metallic light base or mounting stake with a No. 6 AWG bare, annealed or soft drawn, solid copper conductor.

Grounding electrodes may be rods, ground dissipation plates, radials, or other electrodes listed in the NFPA 70 (NEC) or NFPA 780.

Where raceway is installed by the directional bore, jack and bore, or other drilling method, the counterpoise conductor shall be permitted to be installed concurrently with the directional bore, jack and bore, or other drilling method raceway, external to the raceway or sleeve.

The counterpoise wire shall also be exothermically welded to ground rods installed as shown on the plans but not more than 500 feet (150 m) apart around the entire circuit. The counterpoise system shall be continuous and terminate at the transformer vault or at the power source. It shall be securely attached to the vault or equipment external ground ring or other made electrode-grounding system. The connections shall be made as shown on the plans and in the specifications.

Where an existing airfield lighting system is being extended or modified, the new counterpoise conductors shall be interconnected to existing counterpoise conductors at each intersection of the new and existing airfield lighting counterpoise systems.

d. Parallel Voltage Systems. Provide grounding and bonding in accordance with NFPA 70, *National Electrical Code*.

108-3.7 Counterpoise installation above multiple conduits and duct banks. Counterpoise wires shall be installed above multiple conduits/duct banks for airfield lighting cables, with the intent being to provide a complete area of protection over the airfield lighting cables. When multiple conduits and/or duct banks for airfield cable are installed in the same trench, the number and location of counterpoise wires above the conduits shall be adequate to provide a complete area of protection measured 45 degrees each side of vertical.

Where duct banks pass under pavement to be constructed in the project, the counterpoise shall be placed above the duct bank. Reference details on the construction plans.

108-3.8 Counterpoise installation at existing duct banks. When airfield lighting cables are indicated on the plans to be routed through existing duct banks, the new counterpoise wiring shall be terminated at ground rods at each end of the existing duct bank where the cables being protected enter and exit the duct bank. The new counterpoise conductor shall be bonded to the existing counterpoise system.

108-3.9 Exothermic bonding. Bonding of counterpoise wire shall be by the exothermic welding process or equivalent method accepted by the RPR. Only personnel experienced in and regularly engaged in this type of work shall make these connections.

Contractor shall demonstrate to the satisfaction of the RPR, the welding kits, materials and procedures to be used for welded connections prior to any installations in the field. The installations shall comply with the manufacturer's recommendations and the following:

a. All slag shall be removed from welds.

b. Using an exothermic weld to bond the counterpoise to a lug on a galvanized light base is not recommended unless the base has been specially modified. Consult the manufacturer's installation

directions for proper methods of bonding copper wire to the light base. See AC 150/5340-30 for galvanized light base exception.

c. If called for in the plans, all buried copper and weld material at weld connections shall be thoroughly coated with 6 mm of 3M™ Scotchkote™, or approved equivalent, or coated with coal tar Bitumastic® material to prevent surface exposure to corrosive soil or moisture.

108-3.10 Testing. The Contractor shall furnish all necessary equipment and appliances for testing the airport electrical systems and underground cable circuits before and after installation. The Contractor shall perform all tests in the presence of the RPR. The Contractor shall demonstrate the electrical characteristics to the satisfaction of the RPR. All costs for testing are incidental to the respective item being tested. For phased projects, the tests must be completed by phase. The Contractor must maintain the test results throughout the entire project as well as during the warranty period that meet the following:

- a. That all affected lighting power and control circuits (existing and new) are continuous and free from short circuits.
- b. That all affected circuits (existing and new) are free from unspecified grounds.
- c. That all affected circuits (existing and new) are properly connected per applicable wiring diagrams.

d. Insulation Resistance:

1. The insulation resistance of the entire lighting circuit shall be taken before any light fixtures are raised or new cable and temporary fixtures installed (pre-construction testing). The insulation resistance shall be recorded by the Engineer. At the completion of all activities required by Item L-125 and Item L-108, the entire circuit shall be retested and the insulation resistance recorded and compared to the pre-construction installation resistance measurement. The cause of any decrease in insulation resistance shall be investigated and corrected by the Contractor at no additional cost to the Authority.
2. Cables installed in conduit shall be tested before and after backfilling the cable trench. New circuits shall be tested separately from existing circuits. Upon connection of the new circuit to the existing circuit (if applicable), the entire combined circuit shall be tested and results provided to maintenance personnel for future use.
3. The tests must be performed with a suitable high voltage tester which has a steady, filtered DC output voltage. The high voltage tester must contain an accurate voltmeter and microammeter for reading the voltage applied to the circuit and the insulation leakage current
4. Insulation resistance testing methods shall be submitted to the RPR for approval. Insulation resistance testing results shall be recorded on the form provided or an approved form and testing shall be performed in the presence of the RPR. All such testing shall be at the sole expense of the Contractor.
5. Each circuit shall be tested immediately after installation, in accordance with "First Test for New Circuits." Any circuit which has been installed for 60 days or more, even if it has not been operated, shall be tested in accordance with "Succeeding Tests and Old Circuits."
6. When additions are made to old circuits, only the new sections shall be tested in accordance with "First Test on New Circuits." The complete circuit shall be checked at the reduced voltages to insure reliable operation.
7. The insulation resistance to ground of all new non-grounded high voltage series circuits

or cable segments is not less than the values indicated in the table below. Whenever possible, these tests shall be performed when the ground is thoroughly wet. Experience has shown that circuits which pass insulation resistance tests during dry weather may fail after a heavy rain. Each circuit, including transformers, shall be tested as follows:

- i. All high (5kV) and low (600V) voltage tests on airfield lighting circuits shall be carefully supervised by qualified personnel to ascertain that excessive voltages are not applied to circuits.
- ii. Support both leads so that air gaps of several inches (six inches min.) exist between bare conductors and ground. Make sure that the cable sheath is clean and dry for a distance of at least 1 foot from the end of the cable. Also make sure that exposed insulation at end of cable is clean and dry.
- iii. Connect both conductors and apply the test voltage indicated below between conductors and ground until the readings are stable and consistent.

	First Test on New Circuits	Minimum Megohm (mΩ) Reading
Light Circuits		
600 V Circuits	500 VDC	100 mΩ
5,000 V Circuits	1,000 VDC	100 mΩ

	Tests on New Circuits Older Than (> 60 days)	Minimum Megohm (mΩ) Reading
Light Circuits		
600 V Circuits	500 VDC	50 mΩ
5,000 V Circuits	1,000 VDC	50 mΩ

e. Continuity:

1. Each series circuit (existing and new) shall be tested for continuity by ohmmeter or equivalent method. The circuit should then be checked with a megger test set, to make sure it is free of grounds. Any faults indicated by these tests should be located and repaired before proceeding with high voltage tests. Each underground circuit shall be subjected to the following tests.
 - i. Verify all circuits are properly connected.
 - ii. Verify all lighting power and control circuits are continuous and free from short circuits.
 - iii. Confirm all circuits are free from unspecified grounds.
2. Should the counterpoise or ground grid conductors be damaged or suspected of being damaged by construction activities the Contractor shall test the conductors for continuity with a low resistance ohmmeter. The conductors shall be isolated such that no parallel path exists and tested for continuity. The RPR shall approve of the test method selected. All such testing shall be at the sole expense of the Contractor.

f. Earth Resistance:

1. Earth resistance testing methods shall be submitted to the RPR for approval. Earth resistance testing results shall be recorded on the form provided or an approved form and testing shall be performed in the presence of the RPR. All such testing shall be at the sole expense of the Contractor.
2. That the impedance to ground of each ground rod does not exceed 10 ohms prior to establishing connections to other ground electrodes. The fall-of-potential ground impedance test shall be used, as described by American National Standards Institute/Institute of Electrical and Electronic Engineers (ANSI/IEEE) Standard 81, to verify this requirement. As an alternate, clamp-on style ground impedance test meters may be used to satisfy the impedance testing requirement. Test equipment and its calibration sheets shall be submitted for review and approval by the RPR prior to performing the testing.

g. Testing on Existing CCR & Circuit Testing (Pre-Construction):

1. The contractor shall provide the following tests and record the data prior to the installation of the new CCR:
 - i. Input Voltage: _____
 - ii. Input Current (amps): _____
 - iii. Output Voltage: _____
 - iv. Output Current (amps): _____

h. Testing on New CCR & Circuit Testing (Post-Construction):

1. The contractor shall provide the following tests and record the data prior to the installation of the new CCR:
 - i. Input Voltage: _____
 - ii. Input Current (amps): _____
 - iii. Output Voltage: _____
 - iv. Output Current (amps): _____

Two copies of tabulated results of all cable tests performed shall be supplied by the Contractor to the RPR. Where connecting new cable to existing cable, insulation resistance tests shall be performed on the new cable prior to connection to the existing circuit.

There are no approved "repair" procedures for items that have failed testing other than complete replacement.

METHOD OF MEASUREMENT

108-4.1 Cable or counterpoise wire installed in trench or plowed, duct bank or conduit shall be measured by the number of linear feet installed and grounding connectors, trench marking tape, and circuit insulation resistance testing ready for operation, and accepted as satisfactory. Separate measurement shall be made for each cable or counterpoise wire installed in trench, duct bank or conduit. The measurement for this item shall not include additional quantities required for slack.

108-4.2 Separate measurement will not be made for ground rods. Ground rods shall be considered incidental to their respective bid item.

BASIS OF PAYMENT

108-5.1 Payment will be made at the contract unit price for trenching, cable and bare counterpoise wire installed in trench (direct-buried), or cable and equipment ground installed in duct bank or conduit, in place by the Contractor and accepted by the RPR. This price shall be full compensation for furnishing all materials and for all preparation and installation of these materials, and for all labor, equipment, circuit testing prior to and post construction, tools, and incidentals, including ground rods and ground connectors and trench marking tape, necessary to complete this item.

Payment will be made under:

Item L-108-5.1a	1/C No. 8 AWG, 5kV, L-824, Type C Cable, Installed in Conduit – per Linear Foot
Item L-108-5.1b	1/C No. 4 AWG, 600V, THWN-2, Installed in Conduit – per Linear Foot
Item L-108-5.1c	1/C No. 6 AWG, 600V (GND), THWN-2, Installed in Conduit – per Linear Foot
Item L-105-5.1d	1/C No. 6 AWG, Solid, Bare Copper Counterpoise Wire, Including Trenching or Plowing, Including Ground Rods & Connections & Terminations – per Linear Foot

REFERENCES

The publications listed below form a part of this specification to the extent referenced. The publications are referred to within the text by the basic designation only.

Advisory Circulars (AC)

AC 150/5340-26	Maintenance of Airport Visual Aid Facilities
AC 150/5340-30	Design and Installation Details for Airport Visual Aids
AC 150/5345-7	Specification for L-824 Underground Electrical Cable for Airport Lighting Circuits
AC 150/5345-26	Specification for L-823 Plug and Receptacle, Cable Connectors
AC 150/5345-53	Airport Lighting Equipment Certification Program

Commercial Item Description

A-A-59544A	Cable and Wire, Electrical (Power, Fixed Installation)
A-A-55809	Insulation Tape, Electrical, Pressure-Sensitive Adhesive, Plastic

ASTM International (ASTM)

ASTM B3	Standard Specification for Soft or Annealed Copper Wire
ASTM B8	Standard Specification for Concentric-Lay-Stranded Copper Conductors, Hard, Medium-Hard, or Soft
ASTM B33	Standard Specification for Tin-Coated Soft or Annealed Copper Wire for Electrical Purposes
ASTM D4388	Standard Specification for Nonmetallic Semi-Conducting and Electrically Insulating Rubber Tapes

Mil Spec

MIL-PRF-23586F Performance Specification: Sealing Compound (with Accelerator),
Silicone Rubber, Electrical

MIL-I-24391 Insulation Tape, Electrical, Plastic, Pressure Sensitive

National Fire Protection Association (NFPA)

NFPA-70 National Electrical Code (NEC)

NFPA-780 Standard for the Installation of Lightning Protection Systems

American National Standards Institute (ANSI)/Institute of Electrical and Electronics Engineers (IEEE)

ANSI/IEEE STD 81 IEEE Guide for Measuring Earth Resistivity, Ground Impedance, and
Earth Surface Potentials of a Ground System

Federal Aviation Administration Standard

FAA STD-019E Lightning and Surge Protection, Grounding Bonding and Shielding
Requirements for Facilities and Electronic Equipment

END OF ITEM L-108

Item L-110 Airport Underground Electrical Duct Banks and Conduits

DESCRIPTION

110-1.1 This item shall consist of underground electrical conduits and duct banks (single or multiple conduits encased in concrete or buried in sand) installed per this specification at the locations and per the dimensions, designs, and details shown on the plans. This item shall include furnishing and installing of all underground electrical duct banks and individual and multiple underground conduits and removal of existing conduits, cables, and duct banks. It shall also include all turfing trenching, backfilling, removal, and restoration of any paved or turfed areas; concrete encasement, mandrelling, pulling lines, duct markers, plugging of conduits, and the testing of the installation as a completed system ready for installation of cables per the plans and specifications. This item shall also include furnishing and installing conduits and all incidentals for providing positive drainage of the system. Verification of existing ducts is incidental to the pay items provided in this specification.

EQUIPMENT AND MATERIALS

110-2.1 General.

a. All equipment and materials covered by referenced specifications shall be subject to acceptance through manufacturer's certification of compliance with the applicable specification when requested by the RPR.

b. Manufacturer's certifications shall not relieve the Contractor of the responsibility to provide materials per these specifications and acceptable to the RPR. Materials supplied and/or installed that do not comply with these specifications shall be removed, when directed by the RPR and replaced with materials, that comply with these specifications, at the Contractor's cost.

c. All materials and equipment used to construct this item shall be submitted to the RPR for approval prior to ordering the equipment. Submittals consisting of marked catalog sheets or shop drawings shall be provided. Submittal data shall be presented in a clear, precise and thorough manner. Original catalog sheets are preferred. Photocopies are acceptable provided they are as good a quality as the original. Clearly and boldly mark each copy to identify products or models applicable to this project. Indicate all optional equipment and delete non-pertinent data. Submittals for components of electrical equipment and systems shall identify the equipment for which they apply on each submittal sheet. Markings shall be made bold and clear with arrows or circles (highlighting is not acceptable). The Contractor is solely responsible for delays in project that accrue directly or indirectly from late submissions or resubmissions of submittals.

d. The data submitted shall be sufficient, in the opinion of the RPR, to determine compliance with the plans and specifications. The Contractor's submittals shall be electronically submitted in pdf format, tabbed by specification section. The RPR reserves the right to reject any and all equipment, materials or procedures that do not meet the system design and the standards and codes specified in this document.

e. All equipment and materials furnished and installed under this section shall be guaranteed against defects in materials and workmanship for a period of at least twelve (12) months from final acceptance by the Owner. The defective materials and/or equipment shall be repaired or replaced, at the Owner's discretion, with no additional cost to the Owner.

110-2.2 Steel conduit. Rigid galvanized steel (RGS) conduit and fittings shall be hot dipped galvanized inside and out and conform to the requirements of Underwriters Laboratories Standards 6, 514B, and 1242. All RGS conduits or RGS elbows installed below grade, in concrete, permanently wet locations or other similar environments shall be painted with a 10-mil thick coat of asphaltum sealer or shall have a factory-bonded polyvinyl chloride (PVC) cover. Any exposed galvanizing or steel shall be coated with 10 mils of asphaltum sealer. When using PVC coated RGS conduit, care shall be exercised not to damage the factory PVC coating. Damaged PVC coating shall be repaired per the manufacturer's written instructions. In lieu of PVC coated RGS, corrosion wrap tape shall be permitted to be used where RGS is in contact with direct earth.”

110-2.3 Plastic conduit. Plastic conduit and fittings shall conform to the following requirements:

- UL 514B covers W-C-1094 – Conduit fittings all types, classes 1 thru 3 and 6 thru 10.
- UL 514C covers W-C-1094 – All types, Class 5 junction box and cover in plastic (PVC).
- UL 651 covers W-C-1094 – Rigid PVC Conduit, types I and II, Class 4.
- UL 651A covers W-C-1094 – Rigid PVC Conduit and high-density polyethylene (HDPE) Conduit type III and Class 4.

Underwriters Laboratories Standards UL-651 and Article 352 of the current National Electrical Code shall be one of the following, as shown on the plans:

a. Type I – Schedule 40 (or HDPE SDR 13.5) and Schedule 80 PVC (or HDPE SDR 11) suitable for underground use either direct-buried or encased in concrete.

b. Type II – Schedule 40 PVC (or HDPE SDR 13.5) suitable for either above ground or underground use.

c. Type III – Schedule 80 PVC (or HDPE SDR 11) suitable for either above ground or underground use either direct-buried or encased in concrete.

d. Type III – HDPE pipe, minimum standard dimensional ratio (SDR) 11, suitable for placement with directional boring under pavement.

The type of solvent cement shall be as recommended by the conduit/fitting manufacturer.

110-2.4 Split conduit. Split conduit shall be pre-manufactured for the intended purpose and shall be made of steel or plastic.

110-2.5 Conduit spacers. Conduit spacers shall be prefabricated interlocking units manufactured for the intended purpose. They shall be of double wall construction made of high grade, high density polyethylene complete with interlocking cap and base pads. They shall be designed to accept No. 4 reinforcing bars installed vertically.

110-2.6 Concrete. Concrete shall be proportioned, placed, and cured per SDDOT Specification Section 462, Miscellaneous Concrete, Class M.

110-2.7 Precast concrete structures. Precast concrete structures shall be furnished by a plant meeting National Precast Concrete Association Plant Certification Program or another RPR approved third party certification program. Precast concrete structures shall conform to ASTM C478.

110-2.8 Flowable backfill. Not permitted.

110-2.9 Detectable warning tape. Plastic, detectable, American Public Works Association (APWA) red (electrical power lines, cables, conduit and lighting cable), orange (telephone/fiber optic cabling) with continuous legend magnetic tape shall be polyethylene film with a metallized foil core and shall be 3-6 inches (75-150 mm) wide. Detectable tape is incidental to the respective bid item.

CONSTRUCTION METHODS

110-3.1 General. The Contractor shall install underground duct banks and conduits at the approximate locations indicated on the plans. The RPR shall indicate specific locations as the work progresses, if required to differ from the plans. Duct banks and conduits shall be of the size, material, and type indicated on the plans or specifications. Where no size is indicated on the plans or in the specifications, conduits shall be not less than 2 inches (50 mm) inside diameter or comply with the National Electrical Code based on cable to be installed, whichever is larger. All duct bank and conduit lines shall be laid so as to grade toward access points and duct or conduit ends for drainage. Unless shown otherwise on the plans, grades shall be at least 3 inches (75 mm) per 100 feet (30 m). On runs where it is not practicable to maintain the grade all one way, the duct bank and conduit lines shall be graded from the center in both directions toward access points or conduit ends, with a drain into the storm drainage system. Pockets or traps where moisture may accumulate shall be avoided. Under pavement, the top of the duct bank shall not be less than 18 inches (0.5 m) below the subgrade; in other locations, the top of the duct bank or underground conduit shall be not less than 18 inches (0.5 m) below finished grade.

The Contractor shall mandrel each individual conduit whether the conduit is direct-buried or part of a duct bank. An iron-shod mandrel, not more than 1/4 inch (6 mm) smaller than the bore of the conduit shall be pulled or pushed through each conduit. The mandrel shall have a leather or rubber gasket slightly larger than the conduit hole.

The Contractor shall swab out all conduits/ducts and clean base can, manhole, pull boxes, etc., interiors immediately prior to pulling cable. Once cleaned and swabbed the light bases, manholes, pull boxes, etc., and all accessible points of entry to the duct/conduit system shall be kept closed except when installing cables. Cleaning of ducts, base cans, manholes, etc., is incidental to the pay item of the item being cleaned. All raceway systems left open, after initial cleaning, for any reason shall be recleaned at the Contractor's expense. All accessible points shall be kept closed when not installing cable. The Contractor shall verify existing ducts proposed for use in this project as clear and open. The Contractor shall notify the RPR of any blockage in the existing ducts.

For pulling the permanent wiring, each individual conduit, whether the conduit is direct-buried or part of a duct bank, shall be provided with a 200-pound (90 kg) test polypropylene pull rope. The ends shall be secured and sufficient length shall be left in access points to prevent it from slipping back into the conduit. Where spare conduits are installed, as indicated on the plans, the open ends shall be plugged with removable tapered plugs, designed for this purpose.

All conduits shall be securely fastened in place during construction and shall be plugged to prevent contaminants from entering the conduits. Any conduit section having a defective joint shall not be installed. Ducts shall be supported and spaced apart using approved spacers at intervals not to exceed 5 feet (1.5 m).

Unless otherwise shown on the plans, concrete encased duct banks shall be used when crossing under pavements expected to carry aircraft loads, such as runways, taxiways, taxilanes, ramps and aprons. When under paved shoulders and other paved areas, conduit and duct banks shall be encased using flowable fill for protection.

All conduits within concrete encasement of the duct banks shall terminate with female ends for ease in current and future use. Install factory plugs in all unused ends. Do not cover the ends or plugs with concrete.

Where turf is well established and the sod can be removed, it shall be carefully stripped and properly stored.

Trenches for conduits and duct banks may be excavated manually or with mechanical trenching equipment unless in pavement, in which case they shall be excavated with mechanical trenching

equipment. Walls of trenches shall be essentially vertical so that a minimum of shoulder surface is disturbed. Blades of graders shall not be used to excavate the trench.

When rock is encountered, the rock shall be removed to a depth of at least 3 inches (75 mm) below the required conduit or duct bank depth and it shall be replaced with bedding material of earth or sand containing no mineral aggregate particles that would be retained on a 1/4-inch (6.3 mm) sieve. Flowable backfill may not alternatively be used

Underground electrical warning (Caution) tape shall be installed in the trench above all underground duct banks and conduits in unpaved areas. Contractor shall submit a sample of the proposed warning tape for approval by the RPR. If not shown on the plans, the warning tape shall be located 6 inches above the duct/conduit or the counterpoise wire if present.

Joints in plastic conduit shall be prepared per the manufacturer's recommendations for the particular type of conduit. Plastic conduit shall be prepared by application of a plastic cleaner and brushing a plastic solvent on the outside of the conduit ends and on the inside of the couplings. The conduit fitting shall then be slipped together with a quick one-quarter turn twist to set the joint tightly. Where more than one conduit is placed in a single trench, or in duct banks, joints in the conduit shall be staggered a minimum of 2 feet (60 cm).

Changes in direction of runs exceeding 10 degrees, either vertical or horizontal, shall be accomplished using manufactured sweep bends.

Whether or not specifically indicated on the drawings, where the soil encountered at established duct bank grade is an unsuitable material, as determined by the RPR, the unsuitable material shall be removed per Item P-152 and replaced with suitable material. Additional duct bank supports shall be installed, as approved by the RPR.

All excavation shall be unclassified and shall be considered incidental to Item L-110. Dewatering necessary for duct installation, and erosion per federal, state, and local requirements is incidental to Item L-110.

Unless otherwise specified, excavated materials that are deemed by the RPR to be unsuitable for use in backfill or embankments shall be removed and disposed of offsite.

Any excess excavation shall be filled with suitable material approved by the RPR and compacted per Item P-152.

It is the Contractor's responsibility to locate existing utilities within the work area prior to excavation. Where existing active cables cross proposed installations, the Contractor shall ensure that these cables are adequately protected. Where crossings are unavoidable, no splices will be allowed in the existing cables, except as specified on the plans. Installation of new cable where such crossings must occur shall proceed as follows:

a. Existing cables shall be located manually. Unearthed cables shall be inspected to assure absolutely no damage has occurred.

b. Trenching, etc., in cable areas shall then proceed with approval of the RPR, with care taken to minimize possible damage or disruption of existing cable, including careful backfilling in area of cable.

In the event that any previously identified cable is damaged during the course of construction, the Contractor shall be responsible for the complete repair.

110-3.2 Duct banks. Unless otherwise shown in the plans, duct banks shall be installed so that the top of the concrete envelope is not less than 18 inches (0.5 m) below the bottom of the base or stabilized base course layers where installed under runways, taxiways, aprons, or other paved areas, and not less than 18 inches (0.5 m) below finished grade where installed in unpaved areas.

Unless otherwise shown on the plans, duct banks under paved areas shall extend at least 3 feet (1 m) beyond the edges of the pavement or 3 feet (1 m) beyond any under drains that may be installed alongside the paved area. Trenches for duct banks shall be opened the complete length before concrete is placed so that if any obstructions are encountered, provisions can be made to avoid them. Unless otherwise shown on the plans, all duct banks shall be placed on a layer of concrete not less than 3 inches (75 mm) thick prior to its initial set. The Contractor shall space the conduits not less than 3 inches (75 mm) apart (measured from outside wall to outside wall). All such multiple conduits shall be placed using conduit spacers applicable to the type of conduit. As the conduit laying progresses, concrete shall be placed around and on top of the conduits not less than 3 inches (75 mm) thick unless otherwise shown on the plans. All conduits shall terminate with female ends for ease of access in current and future use. Install factory plugs in all unused ends. Do not cover the ends or plugs with concrete.

Conduits forming the duct bank shall be installed using conduit spacers. No. 4 reinforcing bars shall be driven vertically into the soil a minimum of 6 inches (150 mm) to anchor the assembly into the earth prior to placing the concrete encasement. For this purpose, the spacers shall be fastened down with locking collars attached to the vertical bars. Spacers shall be installed at 5-foot (1.5-m) intervals. Spacers shall be in the proper sizes and configurations to fit the conduits. Locking collars and spacers shall be submitted to the RPR for review prior to use.

When specified, the Contractor shall reinforce the bottom side and top of encasements with steel reinforcing mesh or fabric or other approved metal reinforcement. When directed, the Contractor shall supply additional supports where the ground is soft and boggy, where ducts cross under roadways, or where shown on the plans. Under such conditions, the complete duct structure shall be supported on reinforced concrete footings, piers, or piles located at approximately 5-foot (1.5-m) intervals.

All pavement surfaces that are to have ducts installed therein shall be neatly saw cut to form a vertical face. All excavation shall be included in the contract with price for the duct.

Install a plastic, detectable, color as noted, 3 to 6 inches (75 to 150 mm) wide tape, 8 inches (200 mm) minimum below grade above all underground conduit or duct lines not installed under pavement. Utilize the 3-inch (75-mm) wide tape only for single conduit runs. Utilize the 6-inch (150-mm) wide tape for multiple conduits and duct banks. For duct banks equal to or greater than 24 inches (600 mm) in width, utilize more than one tape for sufficient coverage and identification of the duct bank as required.

When existing cables are to be placed in split duct, encased in concrete, the cable shall be carefully located and exposed by hand tools. Prior to being placed in duct, the RPR shall be notified so that he may inspect the cable and determine that it is in good condition. Where required, split duct shall be installed as shown on the drawings or as required by the RPR.

110-3.3 Conduits without concrete encasement. Trenches for single-conduit lines shall be not less than 6 inches (150 mm) nor more than 12 inches (300 mm) wide. The trench for 2 or more conduits installed at the same level shall be proportionately wider. Trench bottoms for conduits without concrete encasement shall be made to conform accurately to grade so as to provide uniform support for the conduit along its entire length.

Unless otherwise shown on the plans, a layer of fine earth material, at least 4 inches (100 mm) thick (loose measurement) shall be placed in the bottom of the trench as bedding for the conduit. The bedding material shall consist of soft dirt, sand or other fine fill, and it shall contain no particles that would be retained on a 1/4-inch (6.3 mm) sieve. The bedding material shall be tamped until firm. Flowable backfill may not alternatively be used.

Unless otherwise shown on plans, conduits shall be installed so that the tops of all conduits within the Airport's secured area where trespassing is prohibited are at least 18 inches (0.5 m) below the finished grade. Conduits outside the Airport's secured area shall be installed so that the tops of the conduits are at least 24 inches (60 cm) below the finished grade per National Electric Code (NEC), Table 300.5.

When two or more individual conduits intended to carry conductors of equivalent voltage insulation rating are installed in the same trench without concrete encasement, they shall be spaced not less than 3 inches (75 mm) apart (measured from outside wall to outside wall) in a horizontal direction and not less than 6 inches (150 mm) apart in a vertical direction. Where two or more individual conduits intended to carry conductors of differing voltage insulation rating are installed in the same trench without concrete encasement, they shall be placed not less than 3 inches (75 mm) apart (measured from outside wall to outside wall) in a horizontal direction and not less than 6 inches (150 mm) apart in a vertical direction.

Trenches shall be opened the complete length between normal termination points before conduit is installed so that if any unforeseen obstructions are encountered, proper provisions can be made to avoid them.

Conduits shall be installed using conduit spacers. No. 4 reinforcing bars shall be driven vertically into the soil a minimum of 6 inches (150 mm) to anchor the assembly into the earth while backfilling. For this purpose, the spacers shall be fastened down with locking collars attached to the vertical bars. Spacers shall be installed at 5-foot (1.5-m) intervals. Spacers shall be in the proper sizes and configurations to fit the conduits. Locking collars and spacers shall be submitted to the RPR for review prior to use.

110-3.4 Markers. The location of each end and of each change of direction of conduits and duct banks shall be marked by a concrete slab marker 2 feet (60 cm) square and 4 - 6 inches (100 - 150 mm) thick extending approximately one inch (25 mm) above the surface. The markers shall also be located directly above the ends of all conduits or duct banks, except where they terminate in a junction/access structure or building. Each cable or duct run from a line of lights and signs to the equipment vault must be marked at approximately every 200 feet (61 m) along the cable or duct run, with an additional marker at each change of direction of cable or duct run.

The Contractor shall impress the word "DUCT" or "CONDUIT" on each marker slab. Impression of letters shall be done in a manner, approved by the RPR, for a neat, professional appearance. All letters and words must be neatly stenciled. After placement, all markers shall be given one coat of high-visibility orange paint, as approved by the RPR. The Contractor shall also impress on the slab the number and size of conduits beneath the marker along with all other necessary information as determined by the RPR. The letters shall be 4 inches (100 mm) high and 3 inches (75 mm) wide with width of stroke 1/2 inch (12 mm) and 1/4 inch (6 mm) deep or as large as the available space permits.

110-3.5 Backfilling for conduits. For conduits, 8 inches (200 mm) of sand, soft earth, or other fine fill (loose measurement) shall be placed around the conduits ducts and carefully tamped around and over them with hand tampers. The remaining trench shall then be backfilled and compacted per Item P-152, except that material used for backfill shall be select material not larger than 4 inches (100 mm) in diameter.

Flowable backfill may not alternatively be used.

Trenches shall not contain pools of water during backfilling operations.

The trench shall be completely backfilled and tamped level with the adjacent surface; except that, where sod is to be placed over the trench, the backfilling shall be stopped at a depth equal to the thickness of the sod to be used, with proper allowance for settlement.

Any excess excavated material shall be removed and disposed of per instructions issued by the RPR.

110-3.6 Backfilling for duct banks. After the concrete has cured, the remaining trench shall be backfilled and compacted per Item P-152, except that the material used for backfill shall be select material not larger than 4 inches (100 mm) in diameter. In addition to the requirements of Item P-152, where duct banks are installed under pavement, one moisture/density test per lift shall be made for each 250 linear feet (76 m) of duct bank or one work period's construction, whichever is less.

Flowable backfill may not alternatively be used.

Trenches shall not contain pools of water during backfilling operations.

The trench shall be completely backfilled and tamped level with the adjacent surface; except that, where sod is to be placed over the trench, the backfilling shall be stopped at a depth equal to the thickness of the sod to be used, with proper allowance for settlement.

Any excess excavated material shall be removed and disposed of per instructions issued by the RPR.

110-3.7 Restoration. Where sod has been removed, it shall be replaced as soon as possible after the backfilling is completed. All areas disturbed by the work shall be restored to its original condition. The restoration shall include topsoiling, fertilizing, seeding, and mulching shown on the plans. The Contractor shall be held responsible for maintaining all disturbed surfaces and replacements until final acceptance. All restoration shall be considered incidental to the respective L-110 pay item. Following restoration of all trenching near airport movement surfaces, the Contractor shall thoroughly visually inspect the area for foreign object debris (FOD), and remove any such FOD that is found. This FOD inspection and removal shall be considered incidental to the pay item of which it is a component part.

110-3.8 Ownership of removed cable. All cable, lights (including accessories), transformers, and signs shall be salvaged to the Owner unless otherwise indicated. All other removals shall be the contractor's responsibility to properly dispose of off airport property.

METHOD OF MEASUREMENT

110-4.1 Removals required will be performed as scheduled or directed by the RPR. Completed and accepted work will be measured per bid item and quantity.

110-4.2 Trenching and backfilling or plowing for conduits shall be measured by the linear foot of trenching and backfilling or plowing for conduits installed, including locator tape, backfill designated material, and restoration, all measured in place, completed, and accepted. Separate measurement shall be made for the various widths.

110-4.3 Underground conduits and duct banks shall each be measured by the linear foot of conduits and duct banks installed, including encasement, drain lines, and the termination at the drainage structure, all measured in place, completed, and accepted. Separate measurement shall be made for the various types and sizes.

110-4.4 Cable markers will be measured by the number of each installed as completed units in place and accepted by the RPR.

BASIS OF PAYMENT

110-5.1 Payment will be made at the contract unit price per linear foot for each conduit removed and cable salvaged. This price shall be full compensation for removal and disposal of existing duct banks, conduits, and cables as shown on the plans, and for all labor, equipment, tools, and incidentals necessary to complete this item per the provisions and intent of the plans and specifications.

110-5.2 Payment will be made at the contract unit price per linear foot for each width of trenching and backfilling or plowing for conduit completed and accepted, including locator tape, backfill designated material, and restoration. This price shall be full compensation for furnishing all materials and for all preparation, assembly, and installation of these materials, and for all labor, equipment, tools, and incidentals necessary to complete this item per the provisions and intent of the plans and specifications.

110-5.3 Payment will be made at the contract unit price per linear foot for each type and size of conduit and duct bank completed and accepted, including drain lines and the termination at the drainage structure. This price shall be full compensation for furnishing all materials and for all preparation, assembly, and

installation of these materials, and for all labor, equipment, tools, and incidentals necessary to complete this item per the provisions and intent of the plans and specifications.

110-5.4 Payment will be made at the contract unit price per each cable marker completed and accepted. This price shall be full compensation for furnishing all materials and for all preparation, assembly, and installation of these materials, and for all labor, equipment, tools, and incidentals necessary to complete this item per the provisions and intent of the plans and specifications.

Payment will be made under:

Item L-110-5.1a	Remove & Salvage Existing Cable; Abandon Existing Conduit – per Lump Sum
Item L-110-5.2a	Trenching & Backfilling or Plowing for Conduit – per Linear Foot
Item L-110-5.3a	Non-Encased, Electrical Conduit, 1-2 Inch, Type I, Sch. 40 PVC in Trench or SDR 13 HDPE Plowed – per Linear Foot
Item L-110-5.3b	Sand-Encased, Electrical Conduit, 1-2 Inch, Type III, Sch. 80 PVC in Trench – per Linear Foot
Item L-110-5.3c	Non-Encased, Electrical Conduit, 1-2 Inch, Type III, Sch. 80 PVC or SDR 11 HDPE Bored – per Linear Foot
Item L-110-5.4a	Cable Markers – per Each

REFERENCES

The publications listed below form a part of this specification to the extent referenced. The publications are referred to within the text by the basic designation only.

Advisory Circular (AC)

AC 150/5340-30	Design and Installation Details for Airport Visual Aids
AC 150/5345-53	Airport Lighting Equipment Certification Program

ASTM International (ASTM)

ASTM A615	Standard Specification for Deformed and Plain Carbon-Steel Bars for Concrete Reinforcement
-----------	--

National Fire Protection Association (NFPA)

NFPA-70	National Electrical Code (NEC)
---------	--------------------------------

Underwriters Laboratories (UL)

UL Standard 6	Electrical Rigid Metal Conduit - Steel
UL Standard 514B	Conduit, Tubing, and Cable Fittings
UL Standard 514C	Nonmetallic Outlet Boxes, Flush-Device Boxes, and Covers
UL Standard 1242	Electrical Intermediate Metal Conduit Steel
UL Standard 651	Schedule 40, 80, Type EB and A Rigid PVC Conduit and Fittings
UL Standard 651A	Type EB and A Rigid PVC Conduit and HDPE Conduit

END OF ITEM L-110

Item L-115 Electrical Manholes and Junction Structures

DESCRIPTION

115-1.1 This item shall consist of electrical manholes and junction structures (hand holes, pull boxes, junction cans, etc.) installed per this specification, at the indicated locations and conforming to the lines, grades and dimensions shown on the plans or as required by the RPR. This item shall include the installation of each electrical manhole and/or junction structures with all associated excavation, backfilling, sheeting and bracing, concrete, reinforcing steel, ladders, appurtenances, testing, dewatering and restoration of surfaces to the satisfaction of the RPR including removal of existing manholes and junction structures as shown on the plans.

EQUIPMENT AND MATERIALS

115-2.1 General.

a. All equipment and materials covered by referenced specifications shall be subject to acceptance through manufacturer's certification of compliance with the applicable specification when so requested by the RPR.

b. Manufacturer's certifications shall not relieve the Contractor of the responsibility to provide materials per these specifications. Materials supplied and/or installed that do not comply with these specifications shall be removed (when directed by the RPR) and replaced with materials that comply with these specifications at the Contractor's cost.

c. All materials and equipment used to construct this item shall be submitted to the RPR for approval prior to ordering the equipment. Submittals consisting of marked catalog sheets or shop drawings shall be provided. Submittal data shall be presented in a clear, precise and thorough manner. Original catalog sheets are preferred. Photocopies are acceptable provided they are as good a quality as the original. Clearly and boldly mark each copy to identify products or models applicable to this project. Indicate all optional equipment and delete any non-pertinent data. Submittals for components of electrical equipment and systems shall identify the equipment to which they apply on each submittal sheet. Markings shall be made bold and clear with arrows or circles (highlighting is not acceptable). The Contractor is solely responsible for delays in the project that may accrue directly or indirectly from late submissions or resubmissions of submittals.

d. The data submitted shall be sufficient, in the opinion of the RPR, to determine compliance with the plans and specifications. The Contractor's submittals shall be electronically submitted in pdf format, tabbed by specification section. The RPR reserves the right to reject any and all equipment, materials or procedures that do not meet the system design and the standards and codes, specified in this document.

e. All equipment and materials furnished and installed under this section shall be guaranteed against defects in materials and workmanship for a period of at least twelve (12) months from the date of final acceptance by the Owner. The defective materials and/or equipment shall be repaired or replaced, at the Owner's discretion, with no additional cost to the Owner.

115-2.2 Concrete structures. Concrete shall be proportioned, placed, and cured per SDDOT Specification Section 462, Miscellaneous Concrete, Class M.

115-2.3 Precast concrete structures. Precast concrete structures shall be furnished by a plant meeting National Precast Concrete Association Plant Certification Program or another engineer approved third party certification program. Provide precast concrete structures where shown on the plans.

Precast concrete structures shall be an approved standard design of the manufacturer. Precast units shall have mortar or bitumastic sealer placed between all joints to make them watertight. The structure shall be designed to withstand HS-20 loadings according to the plans and according to AASHTO Specifications, including AASHTO M306, unless otherwise shown on the plans. Openings or knockouts shall be provided in the structure as detailed on the plans.

Threaded inserts and pulling eyes shall be cast in as shown on the plans.

If the Contractor chooses to propose a different structural design, signed and sealed shop drawings, design calculations, and other information requested by the RPR shall be submitted by the Contractor to allow for a full evaluation by the RPR. The RPR shall review per the process defined in the General Provisions.

115-2.4 Junction boxes. Junction boxes shall be L-867 Class 1A (non-load bearing) or L-868 Class 1A (load bearing) airport light bases that are encased in concrete. The light bases shall have a L-894 circuit-etched cover, gasket, and stainless steel hardware. All bolts, studs, nuts, lock washers, and other similar fasteners used for the light fixture assemblies must be fabricated from 316L (equivalent to EN 1.4404), 304, 304L, 410, or 416 stainless steel. If 304, 410, or 416 stainless steel is utilized it shall be passivated and be free from any discoloration. Covers shall be 3/8-inch (9-mm) thickness for L-867 and 3/4-inch (19-mm) thickness for L-868. All junction boxes shall be provided with both internal and external ground lugs.

115-2.5 Mortar. The mortar shall be composed of one part of cement and two parts of mortar sand, by volume. The cement shall be per the requirements in ASTM C150, Type I. The sand shall be per the requirements in ASTM C144. Hydrated lime may be added to the mixture of sand and cement in an amount not to exceed 15% of the weight of cement used. The hydrated lime shall meet the requirements of ASTM C206. Water shall be potable, reasonably clean and free of oil, salt, acid, alkali, sugar, vegetable, or other substances injurious to the finished product.

115-2.6 Concrete. Concrete shall be proportioned, placed, and cured per SDDOT Specification Section 462, Miscellaneous Concrete, Class M.

115-2.7 Frames and covers. The frames shall conform to one of the following requirements:

- a. ASTM A48 Gray iron castings
- b. ASTM A47 Malleable iron castings
- c. ASTM A27 Steel castings
- d. ASTM A283, Grade D Structural steel for grates and frames
- e. ASTM A536 Ductile iron castings
- f. ASTM A897 Austempered ductile iron castings

All castings specified shall withstand HS-20 loadings according to the plans and according to AASHTO Specifications, including AASHTO M306.

All castings or structural steel units shall conform to the dimensions shown on the plans and shall be designed to support the loadings specified.

Each frame and cover unit shall be provided with fastening members to prevent it from being dislodged by traffic, but which will allow easy removal for access to the structure.

All castings shall be thoroughly cleaned. After fabrication, structural steel units shall be galvanized to meet the requirements of ASTM A123.

Each cover shall have the word "ELECTRIC" or other approved designation cast on it. Each frame and cover shall be as shown on the plans or approved equivalent. No cable notches are required.

Each manhole shall be provided with a "DANGER -- PERMIT-REQUIRED CONFINED SPACE, DO NOT ENTER" safety warning sign as detailed in the Contract Documents and in accordance with OSHA 1910.146 (c)(2).

115-2.8 Ladders. Ladders, if specified, shall be galvanized steel or as shown on the plans.

115-2.9 Reinforcing steel. All reinforcing steel shall be deformed bars of new billet steel meeting the requirements of ASTM A615, Grade 60.

115-2.10 Bedding/special backfill. Bedding or special backfill shall be as shown on the plans.

115-2.11 Flowable backfill. Not permitted.

115-2.12 Cable trays. Cable trays shall be of galvanized steel or aluminum. Cable trays shall be located as shown on the plans.

115-2.13 Plastic conduit. Plastic conduit shall comply with Item L-110, *Airport Underground Electrical Duct Banks and Conduits*.

115-2.14 Conduit terminators. Conduit terminators shall be pre-manufactured for the specific purpose and sized as required or as shown on the plans.

115-2.15 Pulling-in irons. Pulling-in irons shall be manufactured with 7/8-inch (22 mm) diameter hot-dipped galvanized steel or stress-relieved carbon steel roping designed for concrete applications (7 strand, 1/2-inch (12 mm) diameter with an ultimate strength of 270,000 psi (1862 MPa)). Where stress-relieved carbon steel roping is used, a rustproof sleeve shall be installed at the hooking point and all exposed surfaces shall be encapsulated with a polyester coating to prevent corrosion.

115-2.16 Ground rods. Ground rods shall be one-piece, pointed, copper bonded with minimum 10 mil. plated thickness. The ground rods shall be of the length and diameter specified on the plans, but in no case shall they be less than 10 feet long and 3/4 inch in diameter.

CONSTRUCTION METHODS

115-3.1 Unclassified excavation. It is the Contractor's responsibility to locate existing utilities within the work area prior to excavation. Damage to utility lines, through lack of care in excavating, shall be repaired or replaced to the satisfaction of the RPR without additional expense to the Owner.

The Contractor shall perform excavation for structures and structure footings to the lines and grades or elevations shown on the plans or as staked by the RPR. The excavation shall be of sufficient size to permit the placing of the full width and length of the structure or structure footings shown.

All excavation shall be unclassified and shall be considered incidental to Item L-115. Dewatering necessary for structure installation and erosion per federal, state, and local requirements is incidental to Item L-115.

Boulders, logs and all other objectionable material encountered in excavation shall be removed. All rock and other hard foundation material shall be cleaned of all loose material and cut to a firm surface either level, stepped or serrated, as directed by the RPR. All seams, crevices, disintegrated rock and thin strata shall be removed. When concrete is to rest on a surface other than rock, special care shall be taken not to disturb the bottom of the excavation. Excavation to final grade shall not be made until just before the concrete or reinforcing is to be placed.

The Contractor shall provide all bracing, sheeting and shoring necessary to implement and protect the excavation and the structure as required for safety or conformance to governing laws. The cost of bracing, sheeting and shoring shall be included in the unit price bid for the structure.

Unless otherwise provided, bracing, sheeting and shoring involved in the construction of this item shall be removed by the Contractor after the completion of the structure. Removal shall be effected in a manner that will not disturb or mar finished masonry. The cost of removal shall be included in the unit price bid for the structure.

After each excavation is completed, the Contractor shall notify the RPR. Structures shall be placed after the RPR has approved the depth of the excavation and the suitability of the foundation material.

Prior to installation the Contractor shall provide a minimum of 6 inches (150 mm) of sand or a material approved by the RPR as a suitable base to receive the structure. The base material shall be compacted and graded level and at proper elevation to receive the structure in proper relation to the conduit grade or ground cover requirements, as indicated on the plans.

115-3.2 Concrete structures. Concrete structures shall be built on prepared foundations conforming to the dimensions and form indicated on the plans. The concrete and construction methods shall conform to the requirements specified in SDDOT Specification Section 462 Miscellaneous Concrete, Class M. Any reinforcement required shall be placed as indicated on the plans and shall be approved by the RPR before the concrete is placed.

115-3.3 Precast unit installations. Precast units shall be installed plumb and true. Joints shall be made watertight by use of sealant at each tongue-and-groove joint and at roof of manhole. Excess sealant shall be removed and severe surface projections on exterior of neck shall be removed.

115-3.4 Placement and treatment of castings, frames and fittings. All castings, frames and fittings shall be placed in the positions indicated on the Plans or as directed by the RPR and shall be set true to line and to correct elevation. If frames or fittings are to be set in concrete or cement mortar, all anchors or bolts shall be in place and position before the concrete or mortar is placed. The unit shall not be disturbed until the mortar or concrete has set.

Field connections shall be made with bolts, unless indicated otherwise. Welding will not be permitted unless shown otherwise on the approved shop drawings and written approval is granted by the casting manufacturer. Erection equipment shall be suitable and safe for the workman. Errors in shop fabrication or deformation resulting from handling and transportation that prevent the proper assembly and fitting of parts shall be reported immediately to the RPR and approval of the method of correction shall be obtained. Approved corrections shall be made at Contractor's expense.

Anchor bolts and anchors shall be properly located and built into connection work. Bolts and anchors shall be preset by the use of templates or such other methods as may be required to locate the anchors and anchor bolts accurately.

Pulling-in irons shall be located opposite all conduit entrances into structures to provide a strong, convenient attachment for pulling-in blocks when installing cables. Pulling-in irons shall be set directly into the concrete walls of the structure.

115-3.5 Installation of ladders. Ladders shall be installed such that they may be removed if necessary. Mounting brackets shall be supplied top and bottom and shall be cast in place during fabrication of the structure or drilled and grouted in place after erection of the structure.

115-3.6 Removal of sheeting and bracing. In general, all sheeting and bracing used to support the sides of trenches or other open excavations shall be withdrawn as the trenches or other open excavations are being refilled. That portion of the sheeting extending below the top of a structure shall be withdrawn, unless otherwise directed, before more than 6 inches of material is placed above the top of the structure

and before any bracing is removed. Voids left by the sheeting shall be carefully refilled with selected material and rammed tight with tools especially adapted for the purpose or otherwise as may be approved.

The RPR may direct the Contractor to delay the removal of sheeting and bracing if, in his judgment, the installed work has not attained the necessary strength to permit placing of backfill.

115-3.7 Backfilling. After a structure has been completed, the area around it shall be backfilled in horizontal layers not to exceed 6 inches (150 mm) in thickness measured after compaction to the density requirements per Item P-152. Each layer shall be deposited all around the structure to approximately the same elevation. The top of the fill shall meet the elevation shown on the plans or as directed by the RPR.

Backfill shall not be placed against any structure until approval is given by the RPR. In the case of concrete, such approval shall not be given until tests made by the laboratory under supervision of the RPR establish that the concrete has attained sufficient strength to provide a factor of safety against damage or strain in withstanding any pressure created by the backfill or the methods used in placing it.

Where required, the RPR may direct the Contractor to add, at his own expense, sufficient water during compaction to assure a complete consolidation of the backfill. The Contractor shall be responsible for all damage or injury done to conduits, duct banks, structures, property or persons due to improper placing or compacting of backfill.

115-3.8 Connection of duct banks. To relieve stress of joint between concrete-encased duct banks and structure walls, reinforcement rods shall be placed in the structure wall and shall be formed and tied into duct bank reinforcement at the time the duct bank is installed.

115-3.9 Grounding. A ground rod shall be installed in the floor of all concrete structures so that the top of rod extends 6 inches (150 mm) above the floor. The ground rod shall be installed within one foot (30 cm) of a corner of the concrete structure. Ground rods shall be installed prior to casting the bottom slab. Where the soil condition does not permit driving the ground rod into the earth without damage to the ground rod, the Contractor shall drill a 4-inch (100 mm) diameter hole into the earth to receive the ground rod. The hole around the ground rod shall be filled throughout its length, below slab, with Portland cement grout. Ground rods shall be installed in precast bottom slab of structures by drilling a hole through bottom slab and installing the ground rod. Bottom slab penetration shall be sealed watertight with Portland cement grout around the ground rod.

A grounding bus of 4/0 bare stranded copper shall be exothermically bonded to the ground rod and loop the concrete structure walls. The ground bus shall be a minimum of one foot (30 cm) above the floor of the structure and separate from other cables. No. 2 American wire gauge (AWG) bare copper pigtailed shall bond the grounding bus to all cable trays and other metal hardware within the concrete structure. Connections to the grounding bus shall be exothermic. If an exothermic weld is not possible, connections to the grounding bus shall be made by using connectors approved for direct burial in soil or concrete per UL 467. Hardware connections may be mechanical, using a lug designed for that purpose.

115-3.10 Cleanup and repair. After erection of all galvanized items, damaged areas shall be repaired by applying a liquid cold-galvanizing compound per MIL-P-21035. Surfaces shall be prepared and compound applied per the manufacturer's recommendations.

Prior to acceptance, the entire structure shall be cleaned of all dirt and debris.

115-3.11 Restoration. After the backfill is completed, the Contractor shall dispose of all surplus material, dirt and rubbish from the site. The Contractor shall restore all disturbed areas equivalent to or better than their original condition. All sodding, grading and restoration shall be considered incidental to the respective Item L-115 pay item.

The Contractor shall grade around structures as required to provide positive drainage away from the structure.

Areas with special surface treatment, such as roads, sidewalks, or other paved areas shall have backfill compacted to match surrounding areas, and surfaces shall be repaired using materials comparable to original materials.

Following restoration of all trenching near airport movement surfaces, the Contractor shall thoroughly visually inspect the area for foreign object debris (FOD), and remove any such FOD that is found. This FOD inspection and removal shall be considered incidental to the pay item of which it is a component part.

After all work is completed, the Contractor shall remove all tools and other equipment, leaving the entire site free, clear and in good condition.

115-3.12 Inspection. Prior to final approval, the electrical structures shall be thoroughly inspected for conformance with the plans and this specification. Any indication of defects in materials or workmanship shall be further investigated and corrected. The earth resistance to ground of each ground rod shall not exceed 25 ohms. Each ground rod shall be tested using the fall-of-potential ground impedance test per American National Standards Institute / Institute of Electrical and Electronic Engineers (ANSI/IEEE) Standard 81. This test shall be performed prior to establishing connections to other ground electrodes.

115-3.13 Manhole elevation adjustments. The Contractor shall adjust the tops of existing manholes in areas designated in the Contract Documents to the new elevations shown. The Contractor shall be responsible for determining the exact height adjustment required to raise or lower the top of each manhole to the new elevations. The existing top elevation of each manhole to be adjusted shall be determined in the field and subtracted/added from the proposed top elevation.

The Contractor shall remove/extend the existing top section or ring and cover on the manhole structure or manhole access. The Contractor shall install precast concrete sections or grade rings of the required dimensions to adjust the manhole top to the new proposed elevation or shall cut the existing manhole walls to shorten the existing structure, as required by final grades. The Contractor shall reinstall the manhole top section or ring and cover on top and check the new top elevation.

The Contractor shall construct a concrete slab around the top of adjusted structures located in graded areas that are not to be paved. The concrete slab shall conform to the dimensions shown on the plans.

115-3.14 Duct extension to existing ducts. Where existing concrete encased ducts are to be extended, the duct extension shall be concrete encased plastic conduit. The fittings to connect the ducts together shall be standard manufactured connectors designed and approved for the purpose. The duct extensions shall be installed according to the concrete encased duct detail and as shown on the plans.

METHOD OF MEASUREMENT

115-4.1 Electrical manholes and junction structures shall be measured by each unit removed and salvaged. The following items shall be included in the price of each unit: all required excavation and dewatering; sheeting and bracing; all required backfilling with on-site materials; restoration of all surfaces and finished grading and turfing; all required connections; ground rod testing.

115-4.2 Electrical manholes and junction structures shall be measured by each completed in place and accepted. The following items shall be included in the price of each unit: All required excavation and dewatering; sheeting and bracing; all required backfilling with on-site materials; restoration of all surfaces and finished grading and turfing; all required connections; temporary cables and connections; and ground rod testing

115-4.3 Lighting, signs, and all NAVAID junction structures shall be considered incidental to the associated equipment and no separate measurement shall be made.

BASIS OF PAYMENT

115-5.1 The accepted quantity of electrical manholes and junction structures removed and salvaged will be paid for at the Contract unit price per each removed and salvaged. This price shall be full compensation for furnishing all materials and for all preparation, excavation, backfilling and placing of the materials, furnishing and installation of connections to duct banks and other structures as may be required to complete the item as shown on the plans and for all labor, equipment, tools and incidentals necessary to complete the item.

115-5.2 The accepted quantity of electrical manholes and junction structures installed will be paid for at the Contract unit price per each, complete and in place. This price shall be full compensation for furnishing all materials and for all preparation, excavation, backfilling and placing of the materials, furnishing and installation of appurtenances and connections to duct banks and other structures as may be required to complete the item as shown on the plans and for all labor, equipment, tools and incidentals necessary to complete the structure.

Payment will be made under:

Item L-115-5.1a	Remove & Dispose of Existing Junction Box, PAPI Power Control Unit, & Concrete – per Each
Item L-115-5.2a	L-867B (12”) Junction Box with Flat Circuit Etched Steel Cover – per Each

REFERENCES

The publications listed below form a part of this specification to the extent referenced. The publications are referred to within the text by the basic designation only.

American National Standards Institute / Insulated Cable Engineers Association (ANSI/ICEA)

ANSI/IEEE STD 81	IEEE Guide for Measuring Earth Resistivity, Ground Impedance, and Earth Surface Potentials of a Ground System
------------------	---

Advisory Circular (AC)

AC 150/5345-7	Specification for L-824 Underground Electrical Cable for Airport Lighting Circuits
---------------	--

AC 150/5345-26	Specification for L-823 Plug and Receptacle, Cable Connectors
----------------	---

AC 150/5345-42	Specification for Airport Light Bases, Transformer Housings, Junction Boxes, and Accessories
----------------	--

AC 150/5340-30	Design and Installation Details for Airport Visual Aids
----------------	---

AC 150/5345-53	Airport Lighting Equipment Certification Program
----------------	--

Commercial Item Description (CID)

A-A 59544	Cable and Wire, Electrical (Power, Fixed Installation)
-----------	--

ASTM International (ASTM)

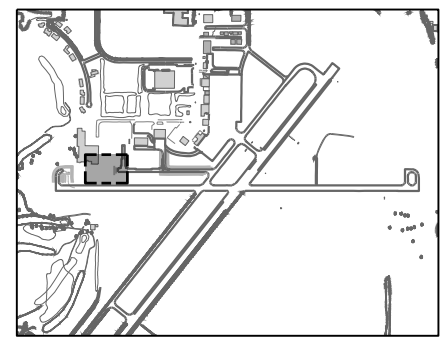
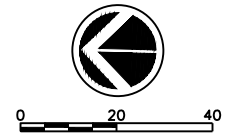
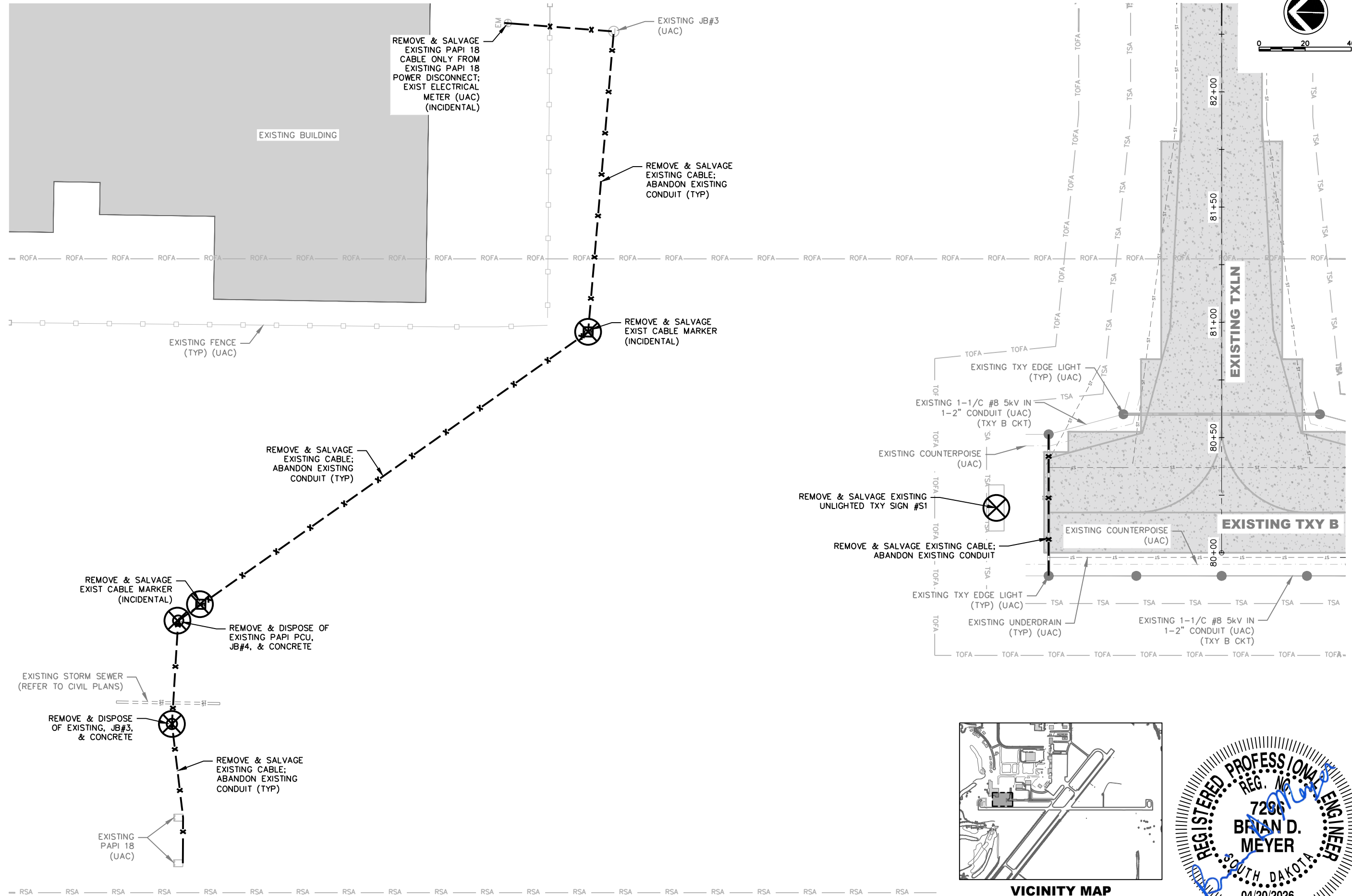
ASTM A27	Standard Specification for Steel Castings, Carbon, for General Application
----------	--

ASTM A47	Standard Specification for Ferritic Malleable Iron Castings
----------	---

ASTM A48	Standard Specification for Gray Iron Castings
----------	---

ASTM A123	Standard Specification for Zinc (Hot Dip Galvanized) Coatings on Iron and Steel Products
ASTM A283	Standard Specification for Low and Intermediate Tensile Strength Carbon Steel Plates
ASTM A536	Standard Specification for Ductile Iron Castings
ASTM A615	Standard Specification for Deformed and Plain Carbon-Steel Bars for Concrete Reinforcement
ASTM A897	Standard Specification for Austempered Ductile Iron Castings
ASTM C144	Standard Specification for Aggregate for Masonry Mortar
ASTM C150	Standard Specification for Portland Cement
ASTM C206	Standard Specification for Finishing Hydrated Lime
FAA Engineering Brief (EB)	
EB #83	In Pavement Light Fixture Bolts
Mil Spec	
MIL-P-21035	Paint High Zinc Dust Content, Galvanizing Repair
National Fire Protection Association (NFPA)	
NFPA-70	National Electrical Code (NEC)

END OF ITEM L-115



VICINITY MAP
NOT TO SCALE



PARTIAL PARALLEL TAXIWAY PHASE 2
HURON REGIONAL AIRPORT
HURON, SOUTH DAKOTA

LIGHTING REMOVALS

CWR | 2026-04-20 | ADDENDUM #1



Project Manager: BDM
Designer: DAF
Project Number: 732603
Phone: (605) 339-4157



