

May 28, 2025

Re: Taxiway Improvements
Watertown Regional Airport
Watertown, South Dakota
AIP #3-46-0058-047/048-2025
Helms #A-9070

Bid Opening: **June 5, 2025**
2:00 pm Local Time

ADDENDUM NUMBER 1

The following modifications are made to the plans and specifications for the Taxiway Improvements Project, Watertown Regional Airport:

CONTRACT DOCUMENTS AND TECHNICAL SPECIFICATIONS

1. Special Conditions, SC-6. Construction Limitations, Page 22, the Phase I and Phase II Descriptions shall be revised to read:

Phase I: Taxiway B, C, and E Construction (Outside Runway Safety Area)

Phase II: Taxiway C3 Construction (Within Runway 17/35 Runway Safety Area)

2. Technical Specifications, Item P-401 Asphalt Mix Pavement, 401-2.1a, Coarse Aggregate Material Requirements Table, Page 155, revise to read:

Material Test	Requirement	Standard
Resistance to Degradation	Loss: 40% maximum	ASTM C131
Soundness of Aggregates by Use of Sodium Sulfate or Magnesium Sulfate	Loss after 5 cycles: 12% maximum using Sodium sulfate - or - 18% maximum using magnesium sulfate	ASTM C88
Clay lumps and friable particles	0.3% maximum	ASTM C142
Percentage of Fractured Particles	Minimum 75% by weight of particles with at least two fractured faces and 85% with at least one fractured face ¹	ASTM D5821
Flat, Elongated, or Flat and Elongated Particles	8% maximum, by weight, of flat, elongated, or flat and elongated particles at 5:1 ²	ASTM D4791

3. Proposal, Pages 468-472, delete in their entirety and replace with the attached pages:

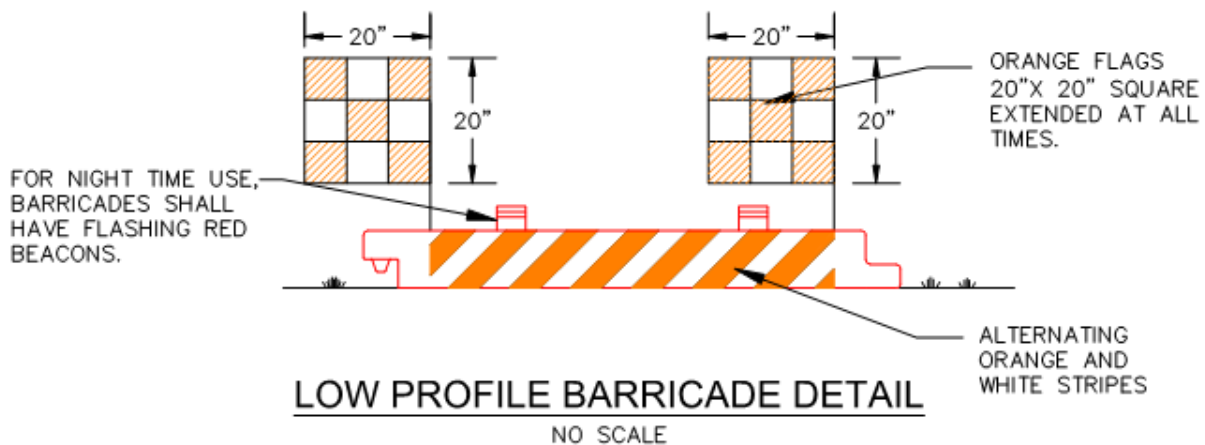
Adjusted the Quantity for Asphalt/Base Removal in regards to the Runway 17 Threshold Lights and multiple electrical bid item/quantity changes (see attached DGR Engineering Addendum).

PLANS

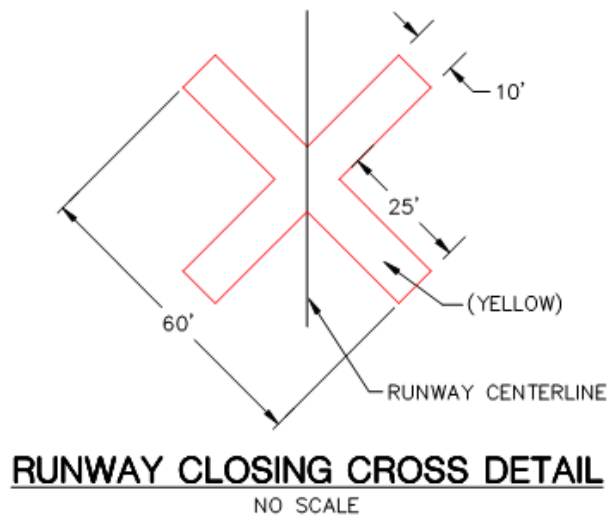
1. Construction Safety Phasing Plan Layout, Sheets 3-7, add the following note to each sheet:

Note: The Contractor shall be required to install a temporary approach, culvert, and gate for access to the project. Once the project is completed, the temporary approach, culvert, and gate shall be removed and all areas will be returned to their pre-project conditions. This work is considered incidental to the Construction Safety Phasing Plan Bid Item and no additional compensation will be made.

2. Construction Safety Phasing Plan Layout, Sheets 3-7, add the detail for low profile barricades:



3. Construction Safety Phasing Plan Layout, Sheet 4, add the detail for the runway closing cross:



4. Construction Safety Phasing Plan Notes, Sheets 8-9, the Phase I and Phase II Descriptions shall be revised to read:

Phase I: Taxiway B, C, and E Construction (Outside Runway Safety Area)

Phase II: Taxiway C3 Construction (Within Runway 17/35 Runway Safety Area)

5. Plan Notes, Sheet 13, delete the “DISPOSAL OF EXCESS MATERIAL” note in its entirety.

6. Estimate of Quantities, Sheet 24, delete in its entirety and replaced with the attached Sheet.

Updated the Estimate of Quantity Tables.

7. Plan Notes, Sheet 13, add the following notes:

ON SITE BORROW EXCAVATION

On-Site Borrow Material shall be excavated for this project from the area(s) designated in the plans or as designated by the Owner.

The borrow area(s) shall be stripped of topsoil to a depth of 6 inches and stockpiled. The borrow material shall be excavated as needed, and salvaged topsoil shall be placed and graded as to provide positive drainage. The cost of stripping, stockpiling, and placing topsoil at the borrow area(s) shall be considered incidental work with no measurement or payment being made.

Seeding shall be measured and paid for as shown in the Proposal.

PROJECT ACCESS

Per the Construction Safety Phasing Plan, all gates must be closed and locked when not in use. When the Contractor has continual traffic entering/exiting the project site, the gate may be left open; however, the Contractor shall have a gate guard to prevent any unauthorized access to the site. Only personnel listed on the authorized access list may be allowed in. This list shall be updated frequently by the Contractor with input from the Airport Manager and Engineer.

The costs associated with any gate guard(s) and maintaining the authorized access list are considered incidental to the Construction Safety Phasing Plan Bid Item and no additional compensation will be made.

8. Existing Taxiway Pavement Removal and Grading Plan, Sheet 18, delete in its entirety and replaced with the attached Sheet.

Added Pavement Removal for the relocation of the Runway 17 Threshold Lights.

9. Taxiway A/C Intersection, Sheet 28, delete in its entirety and replaced with the attached Sheet.

Labeled the Runway Safety Area and Runway Obstacle Free Zone.

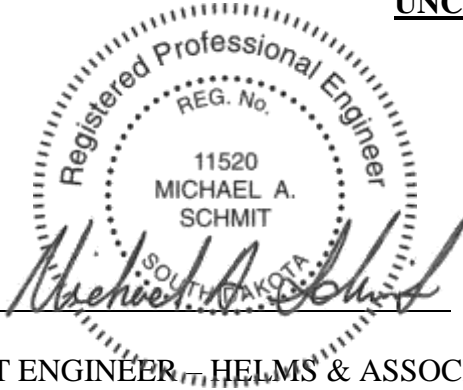
10. Taxiway C Plan View, Sheets 29, 31, 33, delete in their entirety and replaced with the attached Sheets.

Labeled the Runway Safety Area and Runway Obstacle Free Zone.

PRE-BID CONFERENCE

Attached are the Minutes from the May 22, 2024 Pre-Bid Conference.

**ALL OTHER ITEMS OF THE PLANS AND SPECIFICATIONS REMAIN
UNCHANGED**

BY: 

PROJECT ENGINEER, HELMS & ASSOCIATES

Acknowledge receipt of the Addendum by inserting its number on the Bid Form. Failure to do so may subject bidder to disqualification. This Addendum forms a part of the Contract Documents. It modifies them as above.

**TAXIWAY IMPROVEMENTS
WATERTOWN REGIONAL AIRPORT
AIP #3-46-0058-047/048-2025
A-9070**

****BIDDERS MUST BID ON BID SCHEDULE A AND BID SCHEDULE B****

Bid Schedule A - Civil

Item #	Spec #	Item Description	Quantity	Unit	Unit Price	Total Price
1	C-105	Mobilization (Max of 10% of Total Project Cost)	1	L.S.	\$	\$
2	C-100	Contractor Quality Control Plan	1	L.S.	\$	\$
3	S-100	Construction Safety Phasing Plan	1	L.S.	\$	\$
4	P-101	Concrete Pavement Removal (7.5" Nominal Depth)	8,071	SqYd	\$	\$
5	P-101	Asphalt Pavement/Base Removal (12" Nominal Depth)	20,383	SqYd	\$	\$
6	P-101	Cold Milling (2" Nominal Depth)	817	SqYd	\$	\$
7	P-152	Unclassified Excavation	43,328	CuYd	\$	\$
8	P-152	Borrow Excavation	5,247	CuYd	\$	\$
9	P-154	Subbase Course (Furnished)	16,156	CuYd	\$	\$
10	P-154	Subbase Course (Recycled)	6,805	CuYd	\$	\$
11	P-154	Geotextile Separator Fabric	31,419	SqYd	\$	\$
12	P-154	Geogrid	6,000	SqYd	\$	\$
13	P-209	Crushed Aggregate Base Course	4,700	CuYd	\$	\$
14	P-401	Asphalt Base / Surface Course	9,785.0	Ton	\$	\$
15	P-401	Asphalt Binder (PG 64-34)	637.0	Ton	\$	\$
16	P-602	Emulsified Asphalt Prime Coat	37.0	Ton	\$	\$
17	P-603	Emulsified Asphalt Tack Coat	24.0	Ton	\$	\$
18	P-605	Route and Seal Joint	1,406	Ft	\$	\$
19	P-620	Pavement Marking Removal	2,024	SqFt	\$	\$
20	P-620	Pavement Marking (Yellow)	3,414	SqFt	\$	\$
21	P-620	Pavement Marking (Black)	5,862	SqFt	\$	\$
22	P-620	Pavement Marking (Red)	417	SqFt	\$	\$

Bid Schedule A - Civil

Item #	Spec #	Item Description	Quantity	Unit	Unit Price	Total Price
23	P-620	Pavement Marking (White)	90	SqFt	\$	\$
24	P-620	Temporary Pavement Marking (Yellow)	3,414	SqFt	\$	\$
25	P-620	Temporary Pavement Marking (Black)	5,862	SqFt	\$	\$
26	P-620	Temporary Pavement Marking (Red)	417	SqFt	\$	\$
27	P-620	Temporary Pavement Marking (White)	90	SqFt	\$	\$
28	D-701	12" RCP (Class III)	24	Ft	\$	\$
29	D-701	12" RCP Flared End (Class III)	2	Each	\$	\$
30	D-701	18" RCP (Class III)	450	Ft	\$	\$
31	D-701	18" RCP Flared End (Class III)	6	Each	\$	\$
32	D-705	4" Perforated Underdrain Pipe	7,283	Ft	\$	\$
33	D-705	Underdrain Cleanout	22	Each	\$	\$
34	D-705	Connect Underdrain to Existing Underdrain	2	Each	\$	\$
35	D-705	Connect Underdrain to RCP	12	Each	\$	\$
36	T-901	Seeding and Fertilizing	20.0	Acre	\$	\$
37	T-905	Topsoil (Removed from Stockpile)	12,071	CuYd	\$	\$
38	T-908	Mulching	96,800	SqYd	\$	\$
39	TL-100	Field Laboratory, Type I	1	Each	\$	\$
40	Plans	Adjust Sanitary Sewer Manhole Elevation	2	Each	\$	\$
41	Plans	Stop Sign	1	Each	\$	\$
42	Plans	Storm Water Pollution Prevention Plan	1	L.S.	\$	\$
43	Plans	Culvert/Inlet Protection	9	Each	\$	\$

Subtotal Bid Schedule A items 1 – 43 inclusive \$ _____

Written: _____ Dollars

All Items Furnished and Installed

*For Bid Schedule A, Unit Prices will govern where used. Incorrect extensions or totals will be corrected and the corrected figures will be used in determining the low bidder. Final contract amount after construction will be determined based upon final quantities and unit price.

Bid Schedule B - Electrical

Item #	Spec #	Item Description	Quantity	Unit	Unit Price	Total Price
1	C-105	Mobilization (Max of 10% of Total Project Cost)	1	L.S.	\$	\$
2	01 51 26	Temporary Phasing Work, Electrical	1	L.S.	\$	\$
3	L-108	1/C No. 8 AWG, 5 kV, L-824, Type C Cable, Installed in Conduit	15,248	Ft	\$	\$
4	L-108	1/C No. 6 AWG, Solid, Bare Copper Counterpoise Wire, Installed in Trench or Plowed, Including Above Conduit, Connections, Terminations, & Ground Rods	9,917	Ft	\$	\$
5	L-110	Remove & Dispose of Existing Cable	10,423	Ft	\$	\$
6	L-110	Remove & Dispose of Existing Conduit	8,574	Ft	\$	\$
7	L-110	Trenching & Backfilling or Plowing for Conduit	11,903	Ft	\$	\$
8	L-110	Non-Encased, Electrical Conduit, 1-2 Inch, Type I, Sch. 40 PVC in Trench or SDR 13 HDPE Plowed	11,289	Ft	\$	\$
9	L-110	Sand-Encased, Electrical Conduit, 2-2 Inch, Type III, Sch. 80 PVC in Trench	372	Ft	\$	\$
10	L-110	Sand-Encased, Electrical Conduit, 3-2 Inch, Type III, Sch. 80 PVC in Trench	174	Ft	\$	\$
11	L-110	Sand-Encased, Electrical Conduit, 4-2 Inch, Type III, Sch. 80 PVC in Trench	115	Ft	\$	\$
12	L-110	Cable Markers	8	Each	\$	\$
13	L-115	Remove & Dispose of Existing Electrical Manhole	4	Each	\$	\$
14	L-115	L-867B (12"), Junction Box with Flat Blank Steel Cover	5	Each	\$	\$
15	L-125	Remove & Salvage Existing Taxiway Edge Light & Transformer; Remove & Dispose of Base Can & Concrete	87	Each	\$	\$
16	L-125	Remove & Salvage Existing Runway Edge In-Pavement Flush Light & Transformer; Base Can to Remain	1	Each	\$	\$
17	L-125	Remove & Salvage for Reinstallation Existing Runway Threshold Light & Transformers; Remove & Dispose of Base Can & Concrete	8	Each	\$	\$
18	L-125	Remove & Salvage Existing Sign; Remove & Dispose of Concrete Pad & Junction Box	15	Each	\$	\$

Bid Schedule B - Electrical

Item #	Spec #	Item Description	Quantity	Unit	Unit Price	Total Price
19	L-125	Reinstall Existing Runway Threshold Light & Transformer on New L-867 Fixed Bottom Base Can w/ Adjustable Top Including Concrete	8	Each	\$	\$
20	L-125	L-861T, 30-Inch Elevated, Mode 1, LED, Medium Intensity Taxiway Light (MITL) w/ Artic Kit, Blue, Including Fixed Bottom Base Can w/ Adjustable Top, Including Concrete	1	Each	\$	\$
21	L-125	L-861T, 30-Inch Elevated, Mode 1, LED, Medium Intensity Taxiway Light (MITL) w/ Artic Kit, Blue, Including Base Can & Concrete	141	Each	\$	\$
22	L-125	L-862, 30-Inch Elevated, Mode 1 Quartz/Halogen, High Intensity Runway Light (HIRL), White/Yellow, Including Bolt Circle Conversion Adapter Ring	1	Each	\$	\$
23	L-125	L-858Y (Directional), Size 2, Style 2 (LED), Class 2, Mode 2, 1 Module, Airfield Sign, Including Sign Pad & Junction Box	2	Each	\$	\$
24	L-125	L-858Y (Directional), Size 2, Style 2 (LED), Class 2, Mode 2, 2 Module, Airfield Sign, Including Sign Pad & Junction Box	4	Each	\$	\$
25	L-125	L-858L/Y (Location/Directional), Size 2, Style 2 (LED), Class 2, Mode 2, 2 Module, Airfield Sign, Including Sign Pad & Junction Box	5	Each	\$	\$
26	L-125	L-858R/L (Mandatory/Location), Size 2, Style 2 (LED), Class 2, Mode 2, 2 Module, Airfield Sign, Including Sign Pad & Junction Box	1	Each	\$	\$
27	L-125	L-858Y (Destination), Size 2, Style 2 (LED), Class 2, Mode 2, 3 Module, Airfield Sign, Including Sign Pad & Junction Box	3	Each	\$	\$
28	L-125	L-858L/Y (Location/Directional), Size 2, Style 2 (LED), Class 2, Mode 2, 3 Module, Airfield Sign, Including Sign Pad & Junction Box	5	Each	\$	\$
29	L-125	L-858R/L (Mandatory/Location), Size 2, Style 2 (LED), Class 2, Mode 2, 3 Module, Airfield Sign, Including Sign Pad & Junction Box	1	Each	\$	\$

Bid Schedule B - Electrical

Item #	Spec #	Item Description	Quantity	Unit	Unit Price	Total Price
30	L-125	Sign #14, L-858Y (Directional) S1 & L-858R/L (Mandatory/Location) S2 Legend Replacement , Size 2, Style 2 (LED)	1	L.S.	\$	\$
31	L-125	Sign #26, L-858Y (Directional) S1 Legend Replacement, Size 2, Style 2 (LED)	1	L.S.	\$	\$
32	L-125	Sign #27, L-858R/L (Mandatory/Location) S1 Legend Replacement, Size 2, Style 2 (LED)	1	L.S.	\$	\$
33	L-125	Spare Parts	1	L.S.	\$	\$
34	34 43 26.19	Remove & Salvage Existing L-829 Constant Current Regulator	1	L.S.	\$	\$
35	34 43 26.19	L-829 Constant Current Regulator (CCR) w/ Monitoring Options, Class 1 (6.6A), Style 1 (3-Step), Size 10kW	1	Each	\$	\$

Subtotal Bid Schedule B items 1 – 35 inclusive \$ _____

Written: _____ Dollars

All Items Furnished and Installed

*For Bid Schedule B, Unit Prices will govern where used. Incorrect extensions or totals will be corrected and the corrected figures will be used in determining the low bidder. Final contract amount after construction will be determined based upon final quantities and unit price.

TAXIWAY IMPROVEMENTS
WATERTOWN REGIONAL AIRPORT
WATERTOWN, SOUTH DAKOTA
AIP #3-46-0058-047/048-2025
HELMS #A-9070
ESTIMATE OF QUANTITIES

Bid Schedule A - Civil

Item #	Spec #	Item Description	Quantity	Unit
1	C-105	Mobilization (Max of 10% of Total Project Cost)	1	L.S.
2	C-100	Contractor Quality Control Plan	1	L.S.
3	S-100	Construction Safety Phasing Plan	1	L.S.
4	P-101	Concrete Pavement Removal (7.5" Nominal Depth)	8,071	Sq Yd
5	P-101	Asphalt Pavement/Base Removal (12" Nominal Depth)	20,383	Sq Yd
6	P-101	Cold Milling (2" Nominal Depth)	817	Sq Yd
7	P-152	Unclassified Excavation	43,328	CuYd
8	P-152	Borrow Excavation	5,247	CuYd
9	P-154	Subbase Course (Furnished)	16,156	CuYd
10	P-154	Subbase Course (Recycled)	6,805	CuYd
11	P-154	Geotextile Separator Fabric	31,419	Sq Yd
12	P-154	Geogrid	6,000	Sq Yd
13	P-209	Crushed Aggregate Base Course	4,700	CuYd
14	P-401	Asphalt Base / Surface Course	9,785.0	Ton
15	P-401	Asphalt Binder (PG 64-34)	637.0	Ton
16	P-602	Emulsified Asphalt Prime Coat	37.0	Ton
17	P-603	Emulsified Asphalt Tack Coat	24.0	Ton
18	P-605	Route and Seal Joint	1,406	Ft
19	P-620	Pavement Marking Removal	2,024	SqFt
20	P-620	Pavement Marking (Yellow)	3,414	SqFt
21	P-620	Pavement Marking (Black)	5,862	SqFt
22	P-620	Pavement Marking (Red)	417	SqFt
23	P-620	Pavement Marking (White)	90	SqFt
24	P-620	Temporary Pavement Marking (Yellow)	3,414	SqFt
25	P-620	Temporary Pavement Marking (Black)	5,862	SqFt
26	P-620	Temporary Pavement Marking (Red)	417	SqFt
27	P-620	Temporary Pavement Marking (White)	90	SqFt
28	D-701	12" RCP (Class III)	24	Ft
29	D-701	12" RCP Flared End (Class III)	2	Each
30	D-701	18" RCP (Class III)	450	Ft
31	D-701	18" RCP Flared End (Class III)	6	Each
32	D-705	4" Perforated Underdrain Pipe	7,283	Ft
33	D-705	Underdrain Cleanout	22	Each
34	D-705	Connect Underdrain to Existing Underdrain	2	Each
35	D-705	Connect Underdrain to RCP	12	Each
36	T-901	Seeding and Fertilizing	20.0	Acre
37	T-905	Topsoil (Removed from Stockpile)	12,071	CuYd
38	T-908	Mulching	96,800	Sq Yd
39	TL-100	Field Laboratory, Type I	1	Each
40	Plans	Adjust Sanitary Sewer Manhole Elevation	2	Each
41	Plans	Stop Sign	1	Each
42	Plans	Storm Water Pollution Prevention Plan	1	L.S.
43	Plans	Culvert/Inlet Protection	9	Each

Bid Schedule B - Electrical

Item #	Spec #	Item Description	Quantity	Unit
1	C-105	Mobilization (Max of 10% of Total Project Cost)	1	L.S.
2	01 51 26	Temporary Phasing Work, Electrical	1	L.S.
3	L-108	1/C No. 8 AWG, 5 kV, L-824, Type C Cable, Installed in Conduit	15,248	Ft
4	L-108	1/C No. 6 AWG, Solid, Bare Copper Counterpoise Wire, Installed in Trench or Plowed, Including Above Conduit, Connections, Terminations, & Ground Rods	9,917	Ft
5	L-110	Remove & Dispose of Existing Cable	10,423	Ft
6	L-110	Remove & Dispose of Existing Conduit	8,574	Ft
7	L-110	Trenching & Backfilling or Plowing for Conduit	11,903	Ft
8	L-110	Non-Encased, Electrical Conduit, 1-2 Inch, Type I, Sch. 40 PVC in Trench or SDR 13 HDPE Plowed	11,289	Ft
9	L-110	Sand-Encased, Electrical Conduit, 2-2 Inch, Type III, Sch. 80 PVC in Trench	372	Ft
10	L-110	Sand-Encased, Electrical Conduit, 3-2 Inch, Type III, Sch. 80 PVC in Trench	174	Ft
11	L-110	Sand-Encased, Electrical Conduit, 4-2 Inch, Type III, Sch. 80 PVC in Trench	115	Ft
12	L-110	Cable Markers	8	Each
13	L-115	Remove & Dispose of Existing Electrical Manhole	4	Each
14	L-115	L-867B (12"), Junction Box with Flat Blank Steel Cover	5	Each
15	L-125	Remove & Salvage Existing Taxiway Edge Light & Transformer; Remove & Dispose of Base Can & Concrete	87	Each
16	L-125	Remove & Salvage Existing Runway Edge In-Pavement Flush Light & Transformer; Base Can to Remain	1	Each
17	L-125	Remove & Salvage for Reinstallation Existing Runway Threshold Light & Transformers; Remove & Dispose of Base Can & Concrete	8	Each
18	L-125	Remove & Salvage Existing Sign; Remove & Dispose of Concrete Pad & Junction Box	15	Each
19	L-125	Reinstall Existing Runway Threshold Light & Transformer on New L-867 Fixed Bottom Base Can w/ Adjustable Top Including Concrete	8	Each
20	L-125	L-861T, 30-Inch Elevated, Mode 1, LED, Medium Intensity Taxiway Light (MITL) w/ Artic Kit, Blue, Including Fixed Bottom Base Can w/ Adjustable Top, Including Concrete	1	Each
21	L-125	L-861T, 30-Inch Elevated, Mode 1, LED, Medium Intensity Taxiway Light (MITL) w/ Artic Kit, Blue, Including Base Can & Concrete	141	Each
22	L-125	L-862, 30-Inch Elevated, Mode 1 Quartz/Halogen, High Intensity Runway Light (HIRL), White/Yellow, Including Bolt Circle Conversion Adapter Ring	1	Each
23	L-125	L-858Y (Directional), Size 2, Style 2 (LED), Class 2, Mode 2, 1 Module, Airfield Sign, Including Sign Pad & Junction Box	2	Each
24	L-125	L-858Y (Directional), Size 2, Style 2 (LED), Class 2, Mode 2, 2 Module, Airfield Sign, Including Sign Pad & Junction Box	4	Each
25	L-125	L-858L/Y (Location/Directional), Size 2, Style 2 (LED), Class 2, Mode 2, 2 Module, Airfield Sign, Including Sign Pad & Junction Box	5	Each
26	L-125	L-858R/L (Mandatory/Location), Size 2, Style 2 (LED), Class 2, Mode 2, 2 Module, Airfield Sign, Including Sign Pad & Junction Box	1	Each
27	L-125	L-858Y (Destination), Size 2, Style 2 (LED), Class 2, Mode 2, 3 Module, Airfield Sign, Including Sign Pad & Junction Box	3	Each
28	L-125	L-858L/Y (Location/Directional), Size 2, Style 2 (LED), Class 2, Mode 2, 3 Module, Airfield Sign, Including Sign Pad & Junction Box	5	Each
29	L-125	L-858R/L (Mandatory/Location), Size 2, Style 2 (LED), Class 2, Mode 2, 3 Module, Airfield Sign, Including Sign Pad & Junction Box	1	Each
30	L-125	Sign #14, L-858Y (Directional) S1 & L-858R/L (Mandatory/Location) S2 Legend Replacement, Size 2, Style 2 (LED)	1	L.S.
31	L-125	Sign #26, L-858Y (Directional) S1 Legend Replacement, Size 2, Style 2 (LED)	1	L.S.
32	L-125	Sign #27, L-858R/L (Mandatory/Location) S1 Legend Replacement, Size 2, Style 2 (LED)	1	L.S.
33	L-125	Spare Parts	1	L.S.
34	34 43 26.19	Remove & Salvage Existing L-829 Constant Current Regulator	1	L.S.
35	34 43 26.19	L-829 Constant Current Regulator (CCR) w/ Monitoring Options, Class 1 (6.6A), Style 1 (3-Step), Size 10kW	1	Each

Earthwork Table		
Description	Cut (CuYd)	Fill (CuYd)
Taxiways	20,318	17,647
Strip & Stockpile 6" Topsoil	13,617	--
Scarify & Recompact	9,393	9,393
Subtotal	43,328	27,040
35% Shrinkage	--	9,464
Topsoil (Removed from Stockpile)	--	12,071
Borrow Excavation	5,247	--
Balance	48,575	48,575



416 Production SIGN
P.O. Box 111
Aberdeen, S.D. 57402
Phone: 605.225.1212
Fax: 605.225.3189
Email: bob@helmsengineering.com

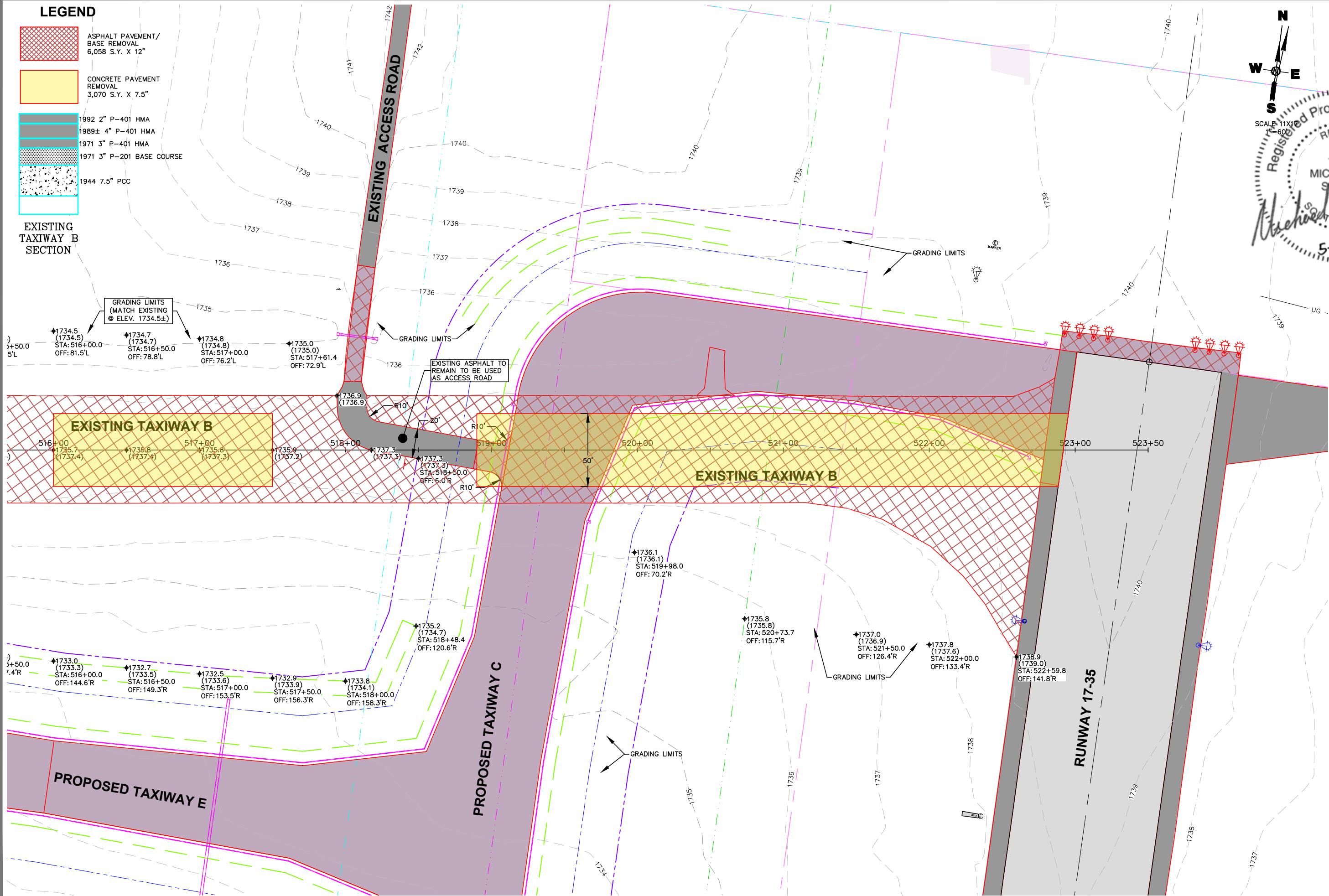
ESTIMATE OF QUANTITIES

Drawn By:	TMO
Chk' By:	MAS
Proj. No:	A-9070
Dwg. No:	9070-03
VP. No:	QTY
Date:	5/28/25

LEGEND

- ASPHALT PAVEMENT/
BASE REMOVAL
6,058 S.Y. X 12"
- CONCRETE PAVEMENT
REMOVAL
3,070 S.Y. X 7.5"
- 1992 2" P-401 HMA
- 1989± 4" P-401 HMA
- 1971 3" P-401 HMA
- 1971 3" P-201 BASE COURSE
- 1944 7.5" PCC

EXISTING
TAXIWAY B
SECTION



SCALE 11X
1"=60'



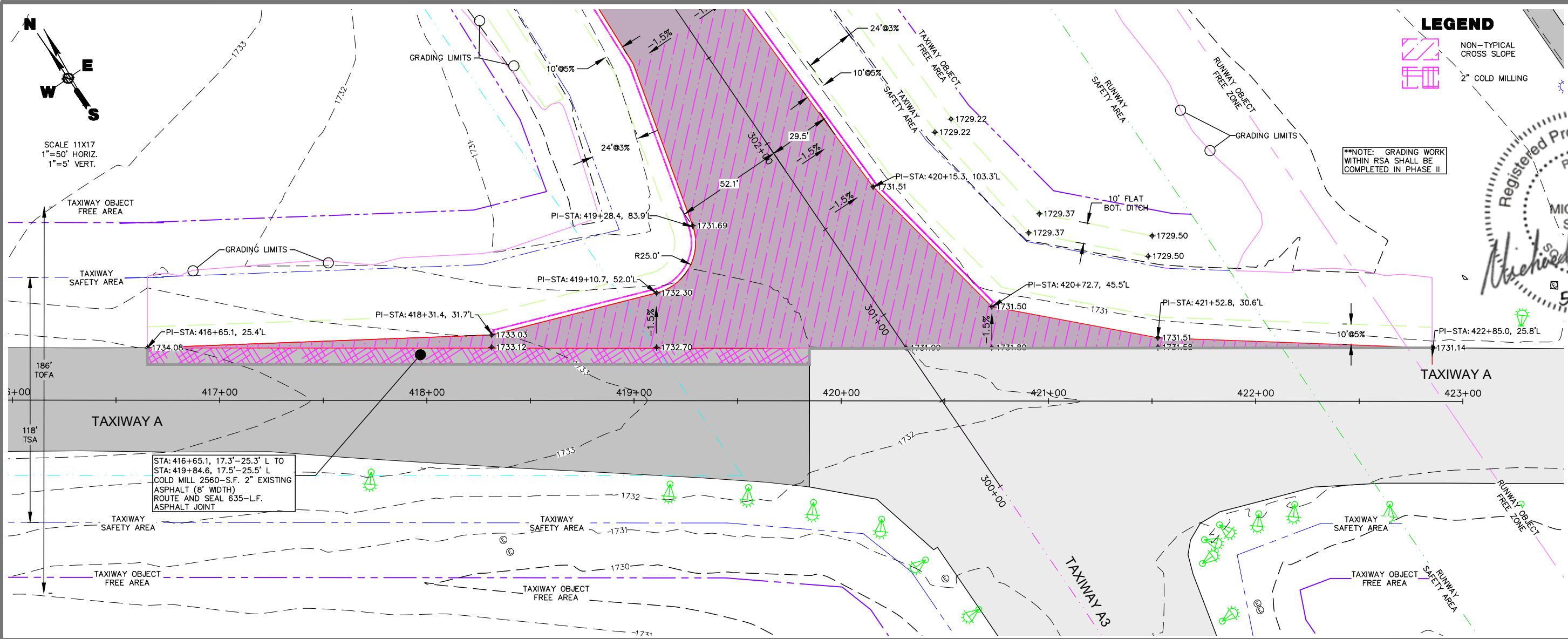
416 Production SIN
P.O. Box 111
Aberdeen, S.D. 57402
Phone: 605.225.1212
Fax: 605.225.3189
Email: bob@helmsengineering.com



EXISTING TAXIWAY PAVEMENT
REMOVAL AND GRADING PLAN

TAXIWAY IMPROVEMENTS
WATERTOWN REGIONAL AIRPORT
WATERTOWN, SOUTH DAKOTA

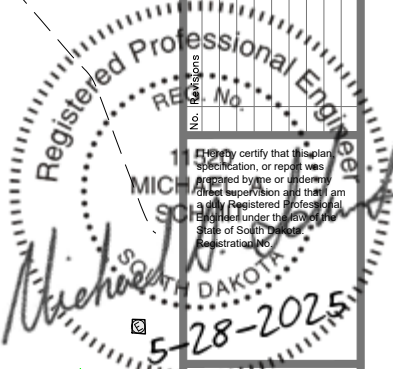
Drawn By: TMO
Chk' By: MAS
Proj. No: A-9070
Dwg. No: 9070-MODEL
VP. No: REM (4)
Date: 5/28/25



LEGEND

NON-TYPICAL CROSS SLOPE

2" COLD MILLING

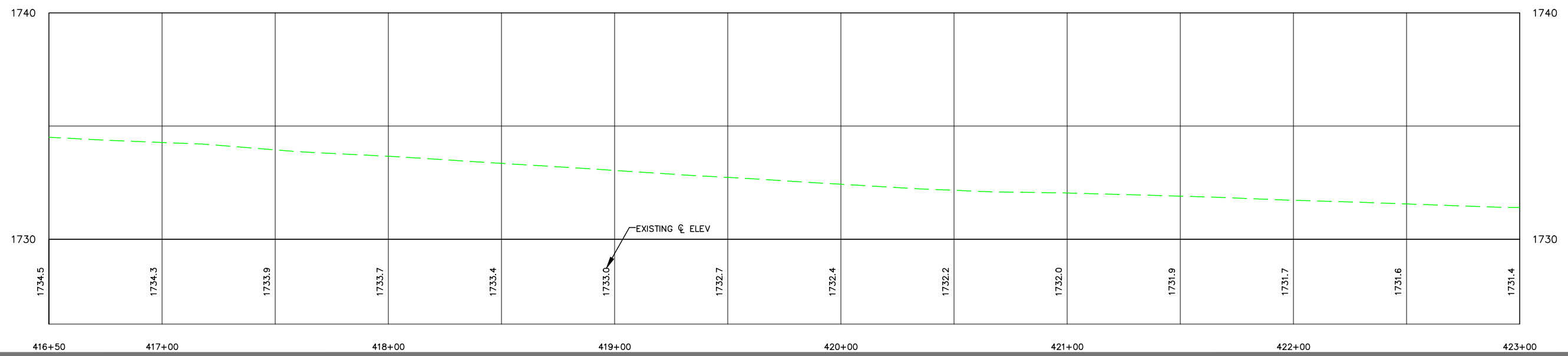


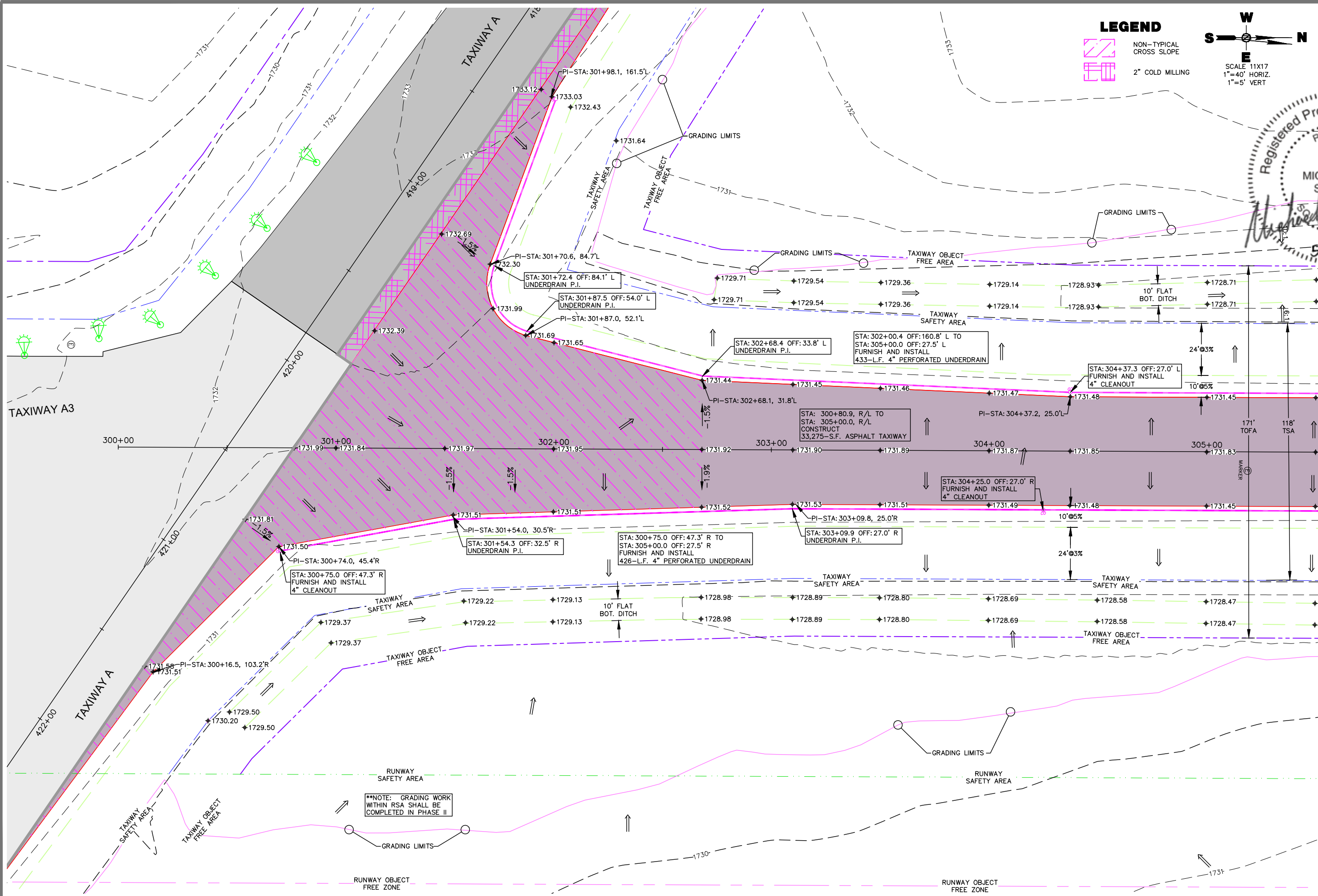
416 Production Set
P.O. Box 111
Aberdeen, S.D. 57402
Phone: 605.225.1212
Fax: 605.225.3189
Email: bob@helmsengineering.com



TAXIWAY A/C INTERSECTION
STA: 416+50 TO 423+00
TAXIWAY IMPROVEMENTS
WATERTOWN REGIONAL AIRPORT
WATERTOWN, SOUTH DAKOTA

Drawn By: TMO
Chk' By: MAS
Proj. No: A-9070
Dwg. No: 9070-02
VP. No: PP(5)
Date: 5/28/25





LEGEND

NON-TYPICAL CROSS SLOPE

2" COLD MILLING

W
S **N**
E

SCALE 11X17
1"=40' HORIZ.
1"=5' VERT

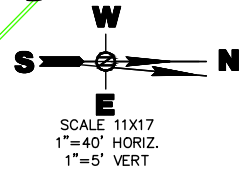
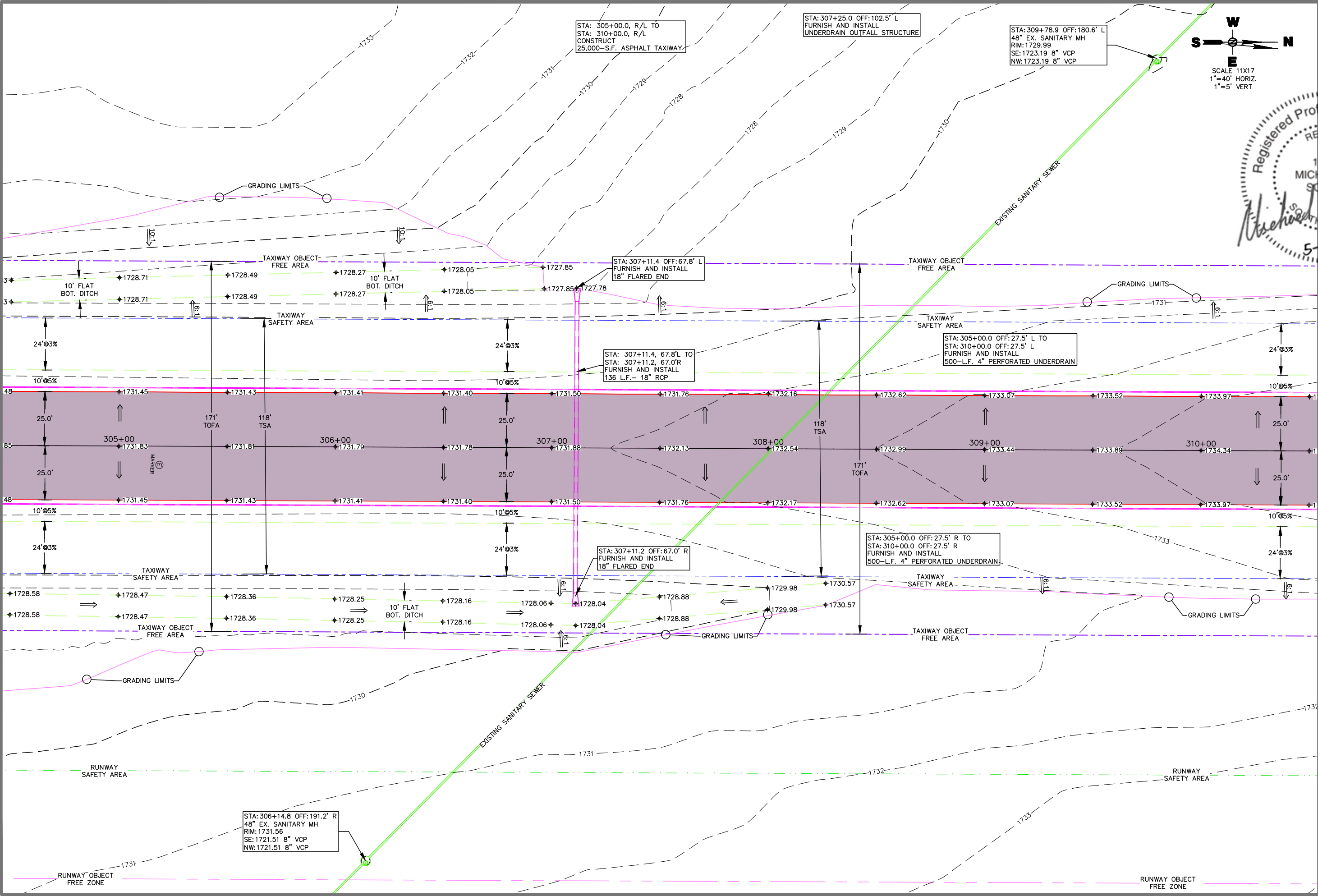
Registered Professional Engineer
RECEIVED
11/28/2025
5-28-2025

416 Production S/N
P.O. Box 111
Aberdeen, S.D. 57402
Phone: 605.225.1212
Fax: 605.225.3189
Email: bob@helmsengineering.com

SPN Helms
CIVIL ENGINEERS & LAND SURVEYORS

TAXIWAY C PLAN VIEW
STA: 300+00 TO 305+00
TAXIWAY IMPROVEMENTS
WATERTOWN REGIONAL AIRPORT
WATERTOWN, SOUTH DAKOTA

Drawn By: TMO
Chk' By: MAS
Proj. No: A-9070
Dwg. No: 9070-02
VP. No: PP(5)
Date: 5/28/25

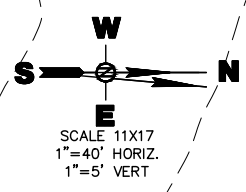
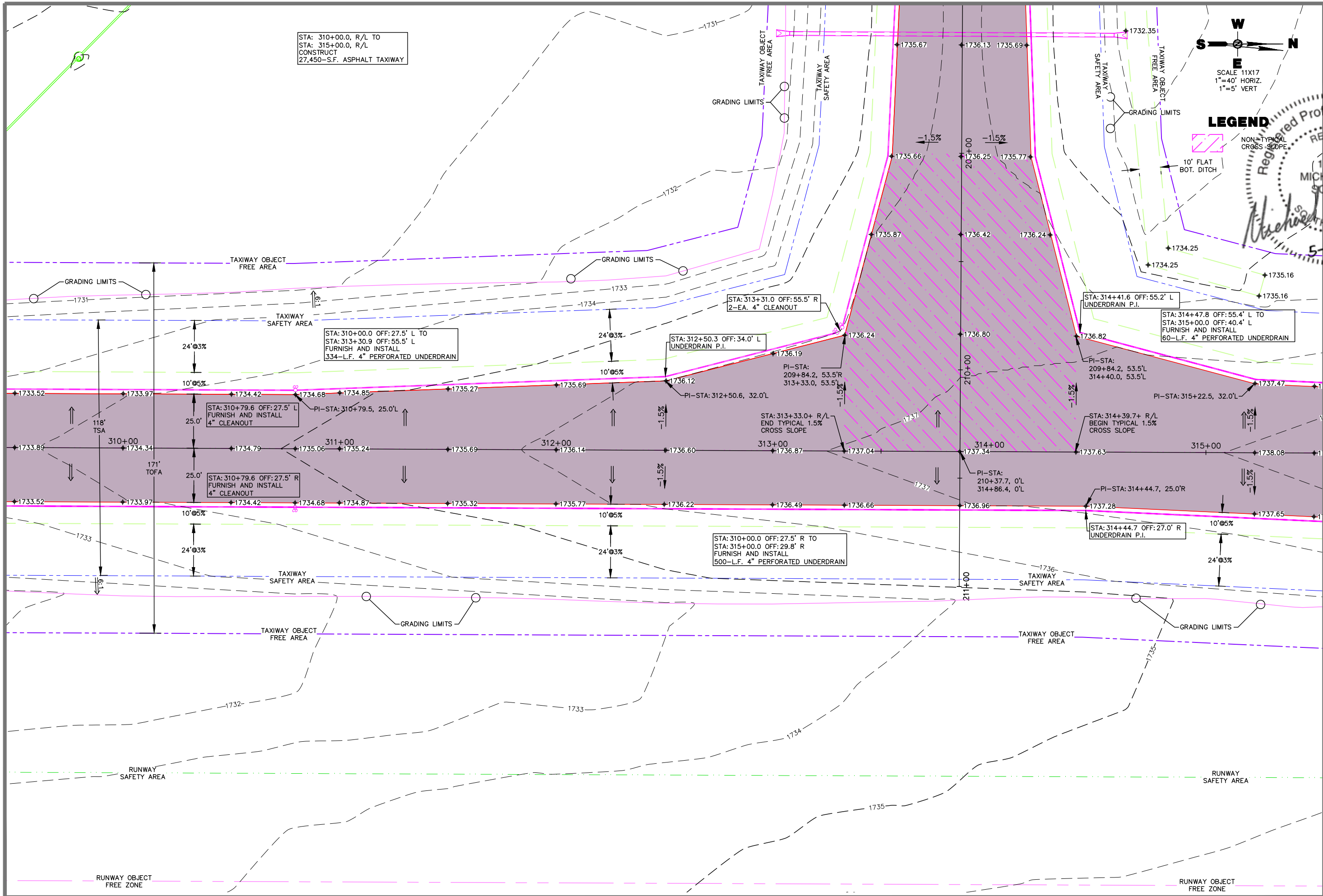


416 Production STN
P.O. Box 111
Aberdeen, S.D. 57402
Phone: 605.225.1212
Fax: 605.225.3189
Email: bob@helmsengineering.com



TAXIWAY C PLAN VIEW
STA:305+00 TO 310+00
TAXIWAY IMPROVEMENTS
WATERTOWN REGIONAL AIRPORT
WATERTOWN, SOUTH DAKOTA

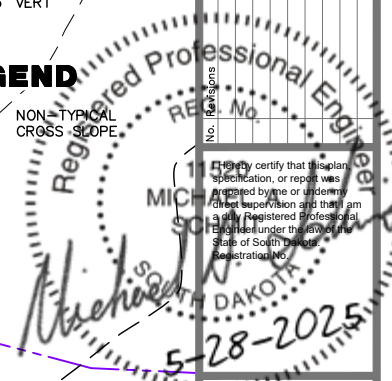
Drawn By: TMO
Chk' By: MAS
Proj. No: A-9070
Dwg. No: 9070-02
VP. No: PP(6)
Date: 5/28/25



LEGEND

NON-TYPICAL CROSS SLOPE

10' FLAT BOT. DITCH



TAXIWAY C PLAN VIEW
STA: 310+00 TO 315+00
TAXIWAY IMPROVEMENTS
WATERTOWN REGIONAL AIRPORT
WATERTOWN, SOUTH DAKOTA

Drawn By: TMO
Chk' By: MAS
Proj. No: A-9070
Dwg. No: 9070-02
VP. No: PP(7)
Date: 5/28/25

416 Production Set
P.O. Box 111
Aberdeen, S.D. 57402
Phone: 605.225.1212
Fax: 605.225.3189
Email: bob@helmsengineering.com



Addendum No. 1

Page 1 of 1

DATE: May 28, 2025

PROJECT: Taxiway Improvements, Watertown Regional Airport
Watertown, South Dakota
DGR Project No. 730405

LETTING DATE: June 5, 2025
AND LOCATION: City Office
City of Watertown
20 N. Maple
PO Box 910
Watertown, SD 57201

ADDENDUM NO. 1

This Addendum forms a part of the Contract Documents and modifies the Contract Documents, Specifications, and Drawings as described below. The Bidder shall acknowledge receipt of this Addendum on the Bid Form as failure to do so may subject the bid to disqualification.

Drawings:

1. REPLACE the following plan sheets with the attached: E9, E12, E13, E16, E18, E21, E24, E25, E26, E102.
2. REMOVE the following plan sheets: E107. Unlighted signs are not applicable to the project.
3. ADD the following notes to the Vault Plan Notes, Note 2.

All communication cables shall be provided by the Original Equipment Manufacturer (OEM) of the Airport Lighting Control and Monitoring System (ALCMS). Update the vault ALCMS computer to include communication interface card which shall be provided by the OEM of the ALCMS. Provide ALCMS commissioning by the OEM. OEM contact: Eaton Crouse-Hinds Contact: Nir Godel, Product Line Manager, Eaton Crouse-Hinds, O: 1-860-683-4389, C: 1-860-977-9186. ALCMS as built drawings available upon request.

This addendum shall become a legal and binding part of the contract documents. All Bidders shall agree to accept the revisions indicated and prepare proposals in accordance therewith.

DGR Engineering

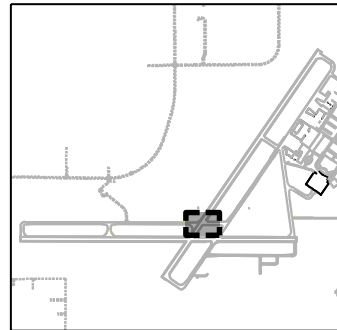
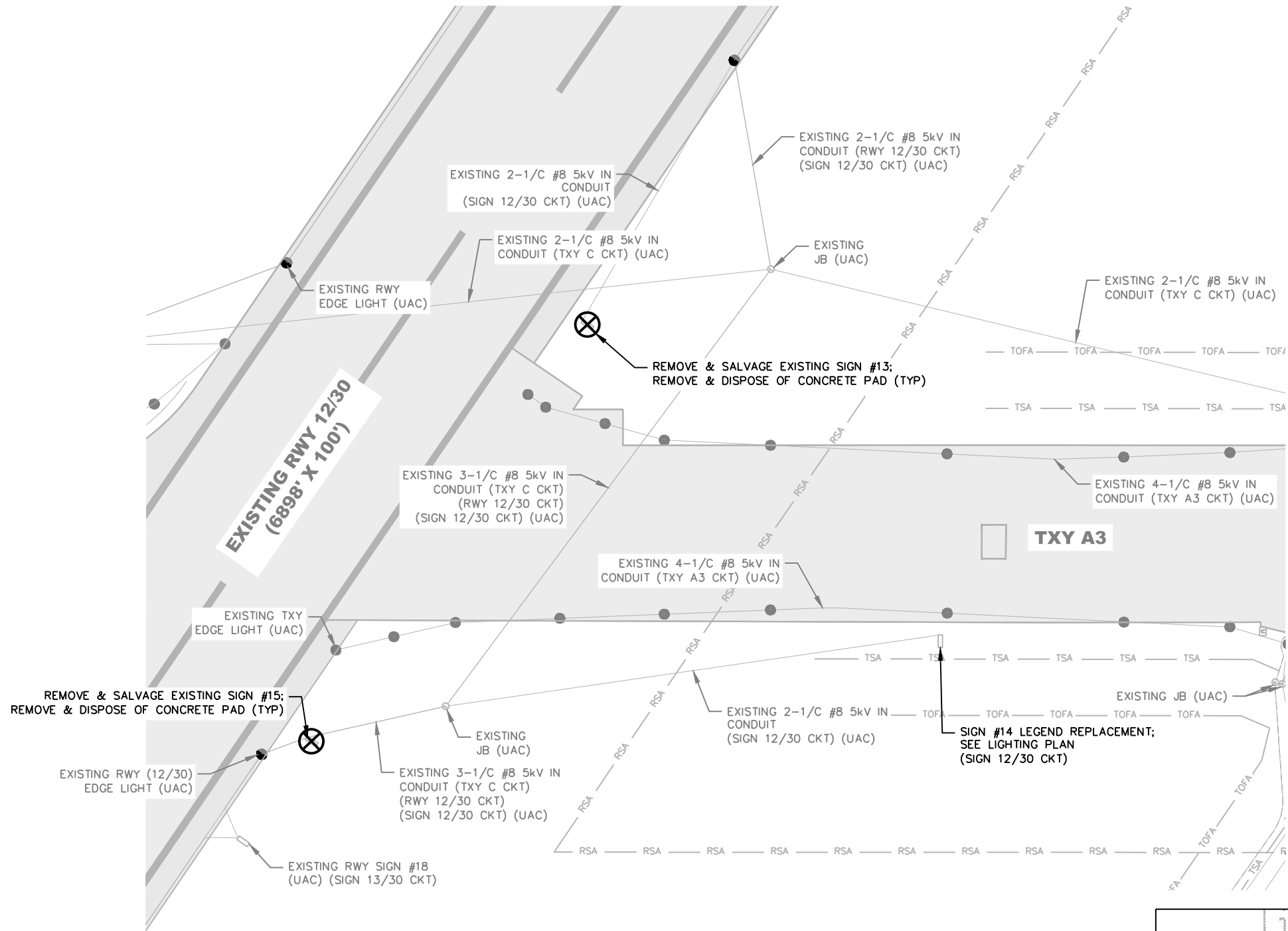
By Brian D. Meyer
Brian Meyer, PE



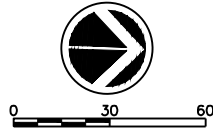
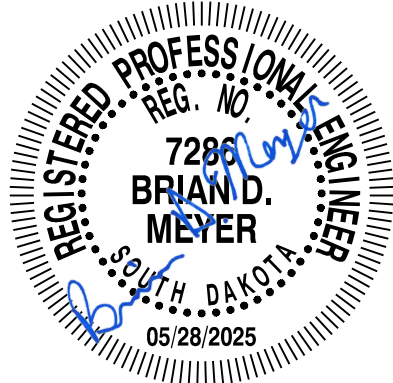
DGR Engineering — 1300 S Highline Avenue — Sioux Falls, SD 57110

phone: 605.339.4157 — fax: 605.339.4175 — dgr.com

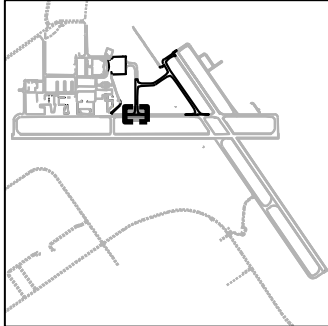
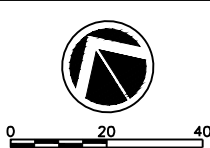
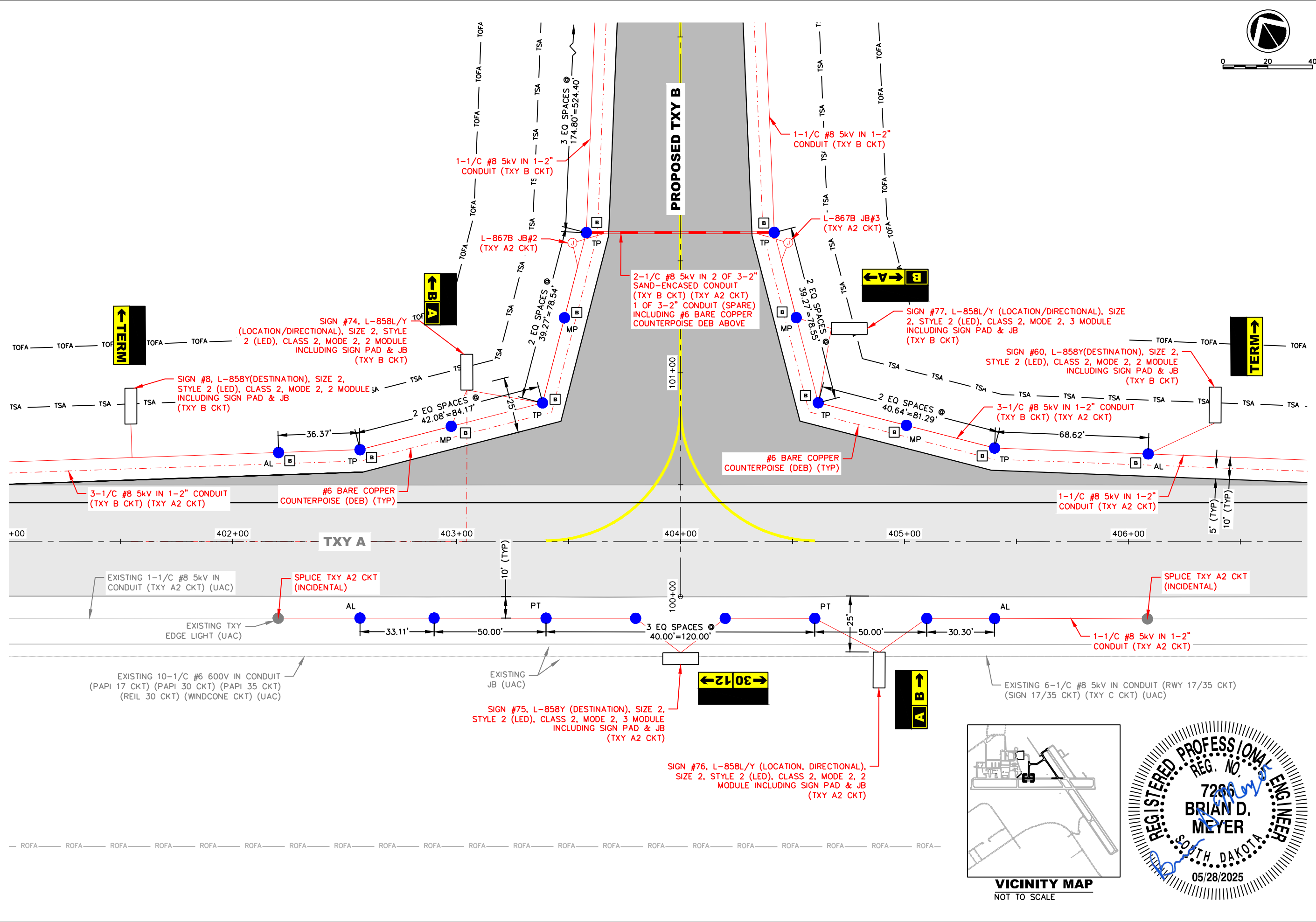
P:\07\300 South Dakota\304 Watertown\730405 - Parallel Txy C & Txy B Lighting\3 - Project Plans & Specifications\Final Plans & Specs\Addendum #1\ATY 047 & 048 Taxiway Improvements (Lighting)_Add No. 1.docx



VICINITY MAP
NOT TO SCALE







TAXIWAY IMPROVEMENTS
WATERTOWN REGIONAL AIRPORT
WATERTOWN, SOUTH DAKOTA

LIGHTING PLAN

DAF | 2025-05-22 | ADD. NO. 1 - SIGN LEGEND UPDATES

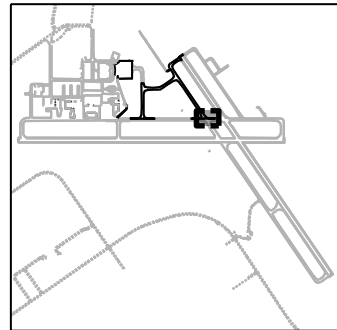
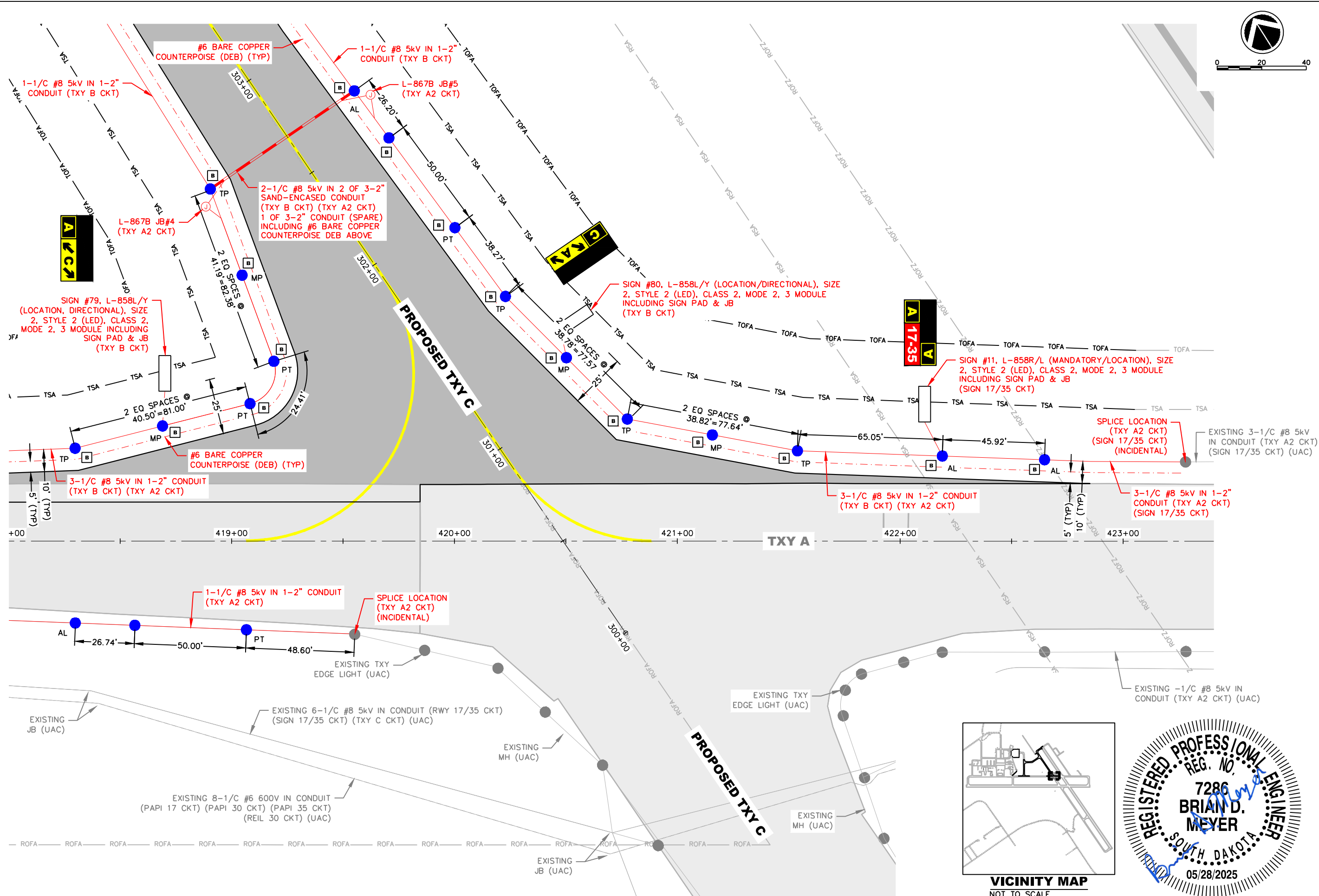
REVISIONS

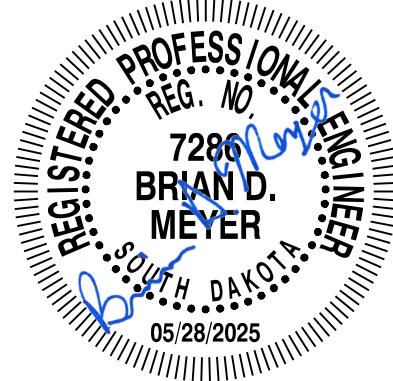
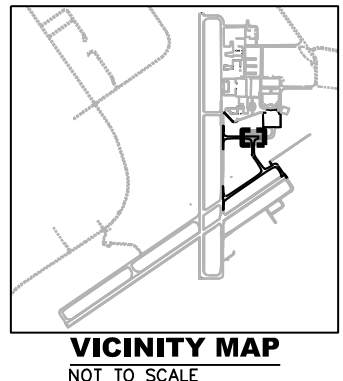
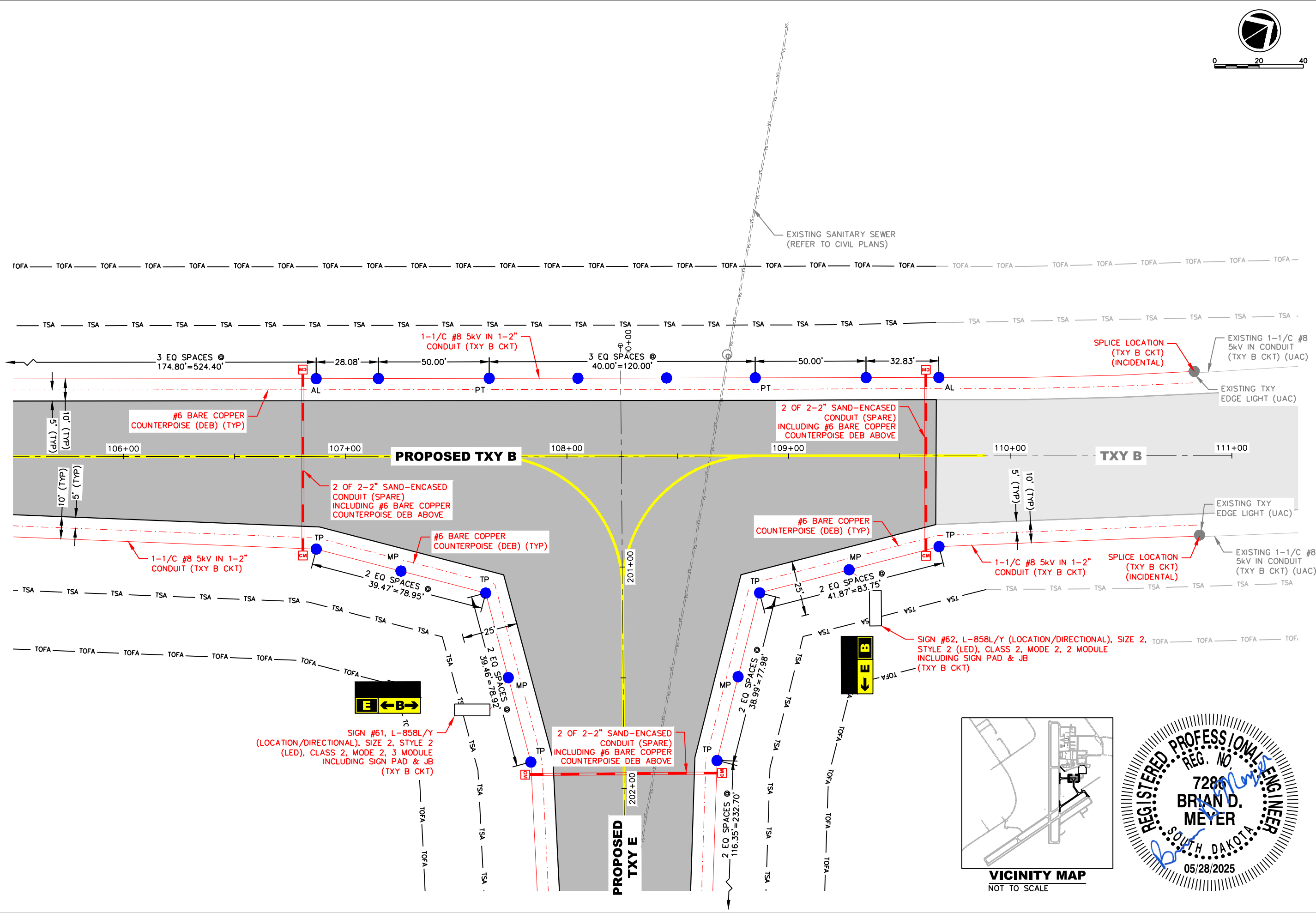
CIVIL ENGINEERS & LAND SURVEYORS

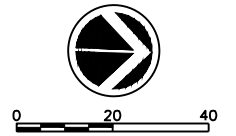
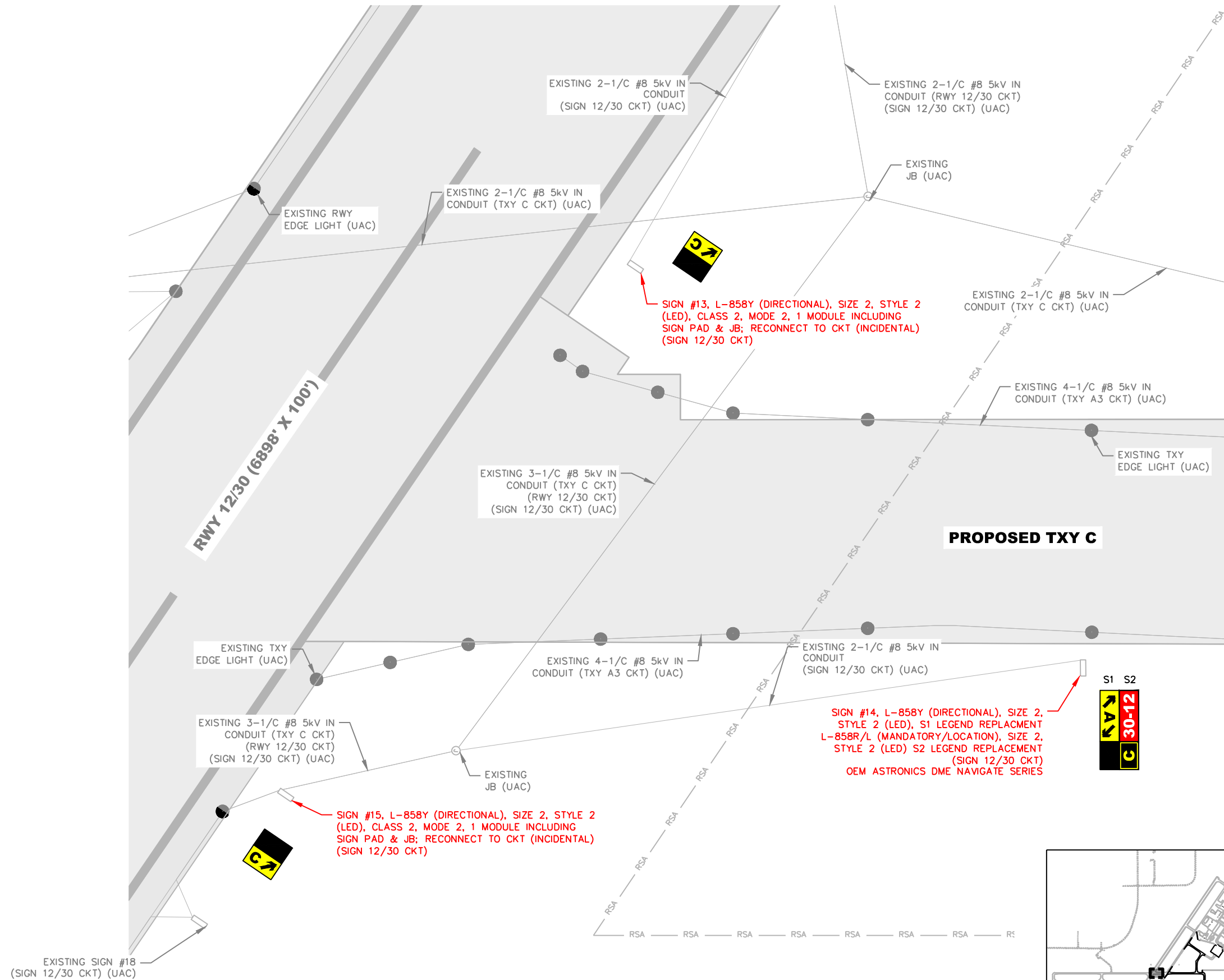
Project Manager: BDM
Designer: BGS
Project Number: 730405
Phone: (605) 339-4157

ENGINEERING

Sheet
E13



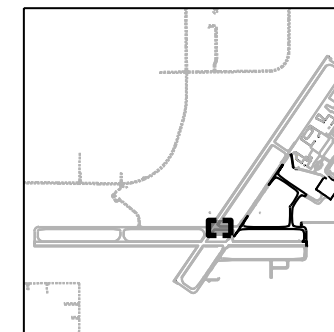




SIGN #14 - EXISTING S1
TO BE REPLACED

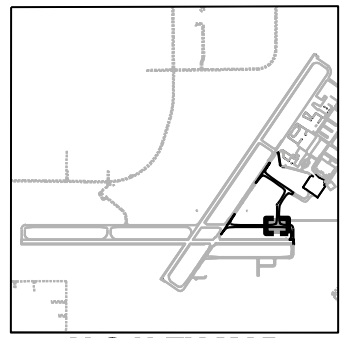
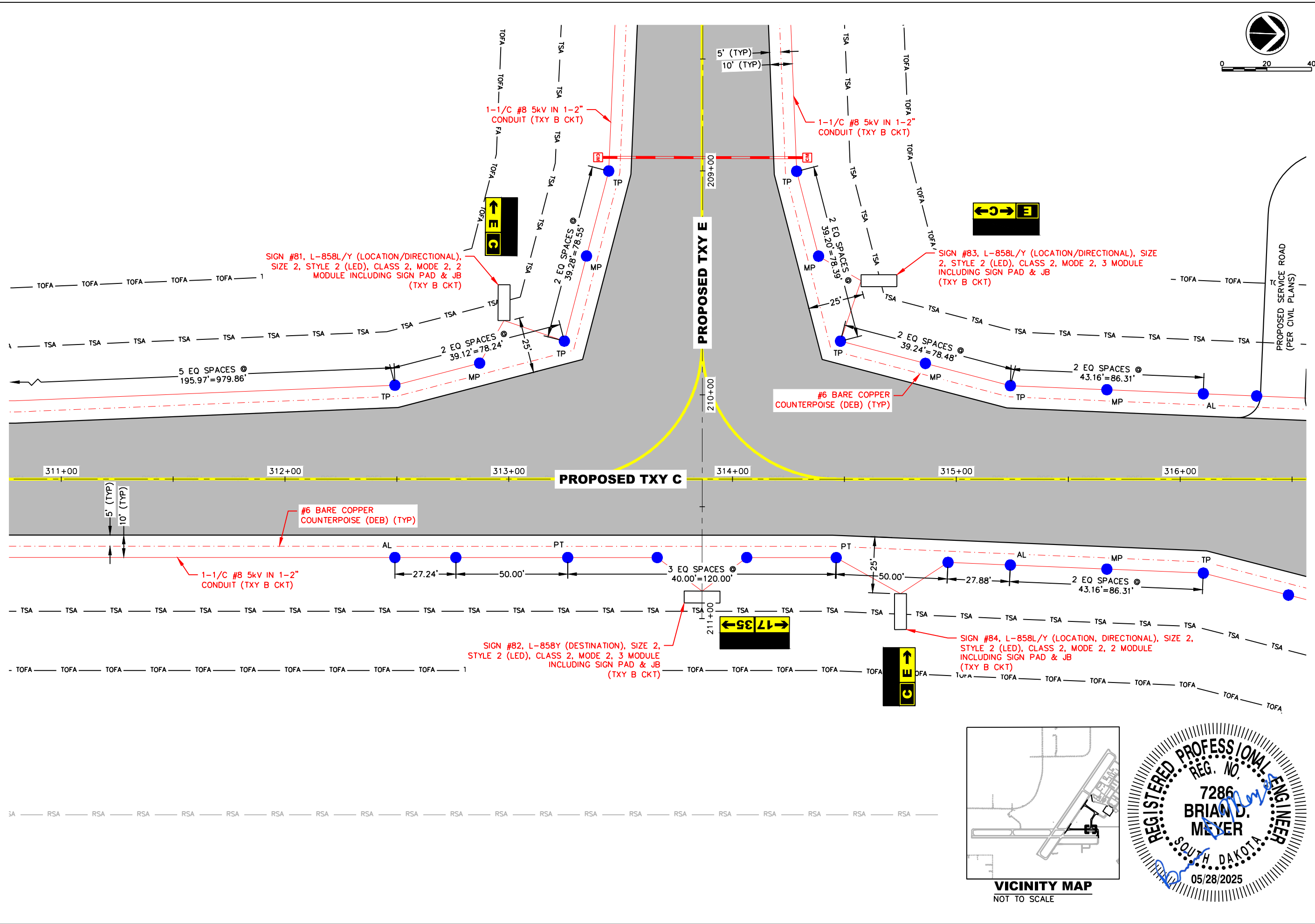


SIGN #14 - EXISTING S2
TO BE REPLACED



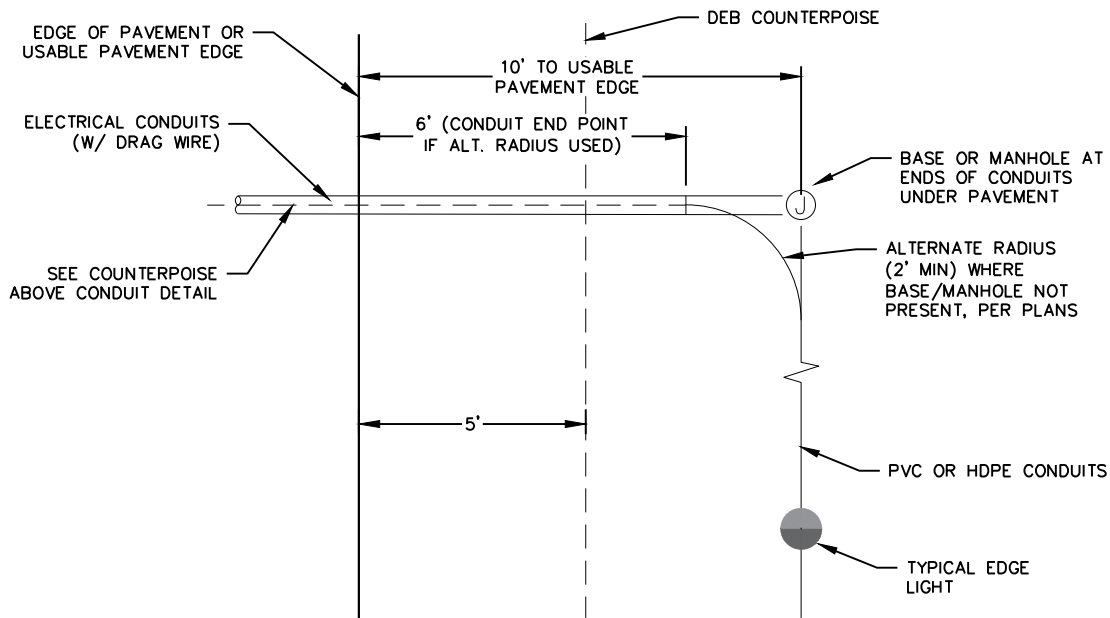
VICINITY MAP
NOT TO SCALE







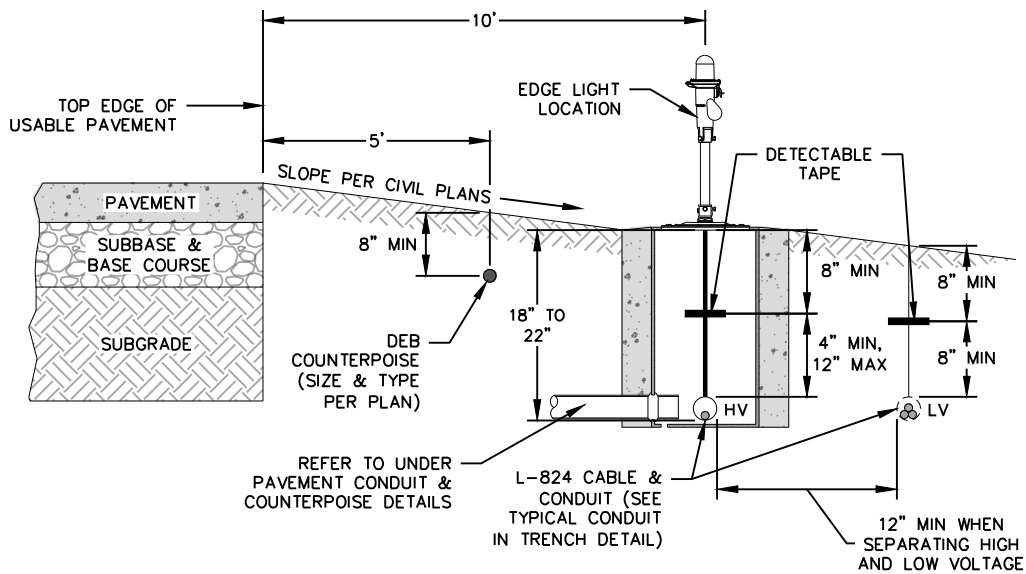




NOTES

1. GND RODS AT 500 FOOT MAX SPACING (INCIDENTAL).
2. TERMINATE, SPLICE OR CONNECT COUNTERPOISE W/ EXOTHERMIC WELD TO GND ROD.

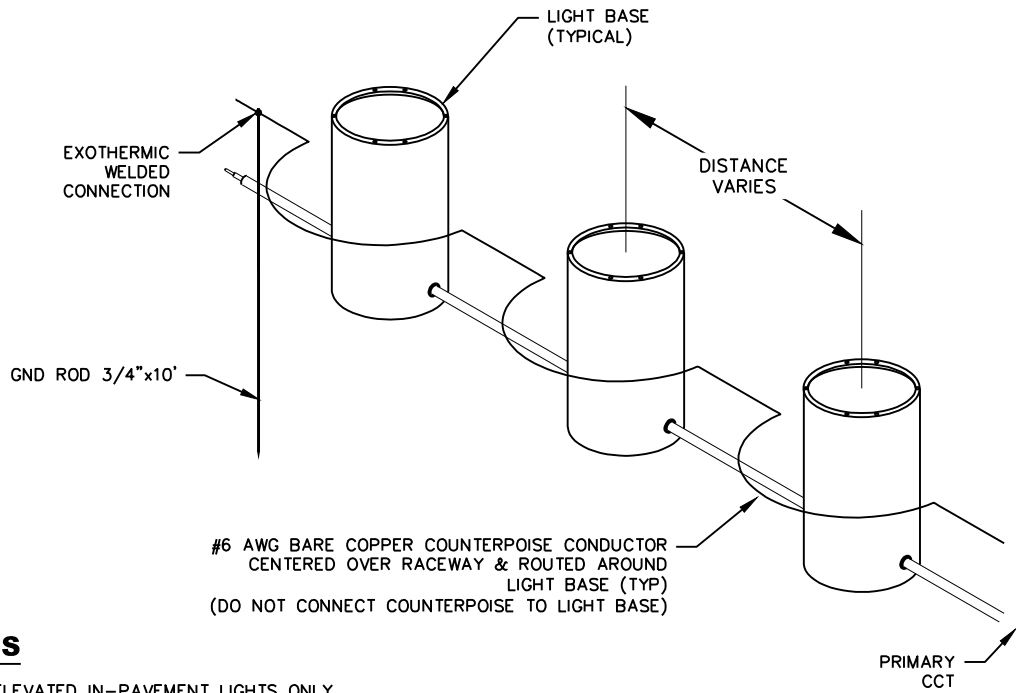
PLAN VIEW



ELEVATION VIEW

EDGE LIGHT CABLE/COUNTERPOISE - ELEVATION VIEW

NOT TO SCALE

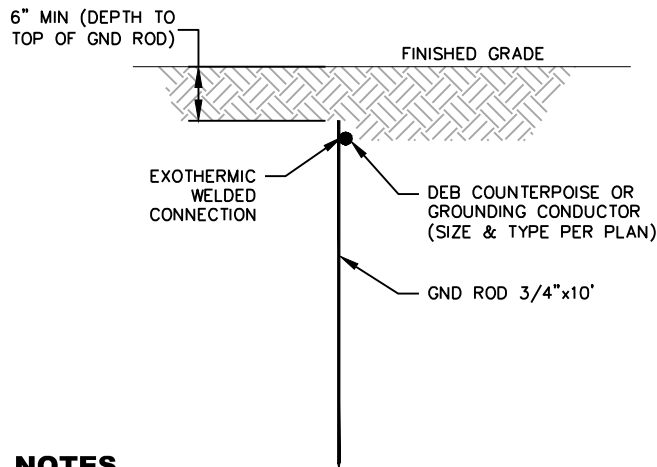


NOTES

1. FOR ELEVATED IN-PAVEMENT LIGHTS ONLY.

COUNTERPOISE INSTALLATION METHOD (ISOLATION)

NOT TO SCALE

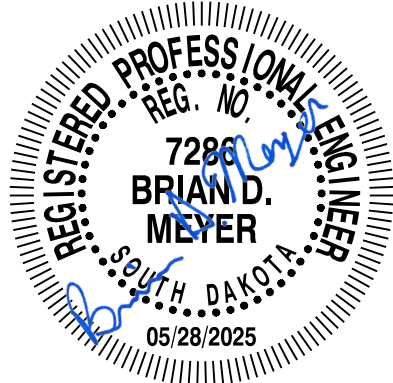


NOTES

1. DETAIL REFLECTS ALL GND ROD INSTALLATIONS, GND ROD CONNECTIONS & COUNTERPOISE CONNECTIONS.
2. INSTALL GND ROD AT MAXIMUM 500 FOOT SPACING CONNECTED TO COUNTERPOISE. USE GND ROD TO TERMINATE THE COUNTERPOISE AT BOTH ENDS OF CONDUIT.
3. COST OF GND RODS IS INCIDENTAL TO THE ASSOCIATED ITEMS REQUIRING GROUNDING UNLESS OTHERWISE SPECIFIED.
4. THE NUMBER OF GND RODS IS SITE SPECIFIC AND MAY DEPEND ON SOIL RESISTIVITY.

GROUND ROD & COUNTERPOISE

NOT TO SCALE



Pre-Bid Conference Minutes

**Taxiway Improvements
Watertown Regional Airport
Watertown, South Dakota
AIP #3-46-0058-047/048-2025; Helms # A-9070
May 22, 2025
11:00 am (Central)**

I. Bidding

A. Delivery of Bids

Sealed: Office of the City Finance Officer
20 N Maple
Watertown, South Dakota 57201

B. Mailing of Bids

Sealed: Office of the City Finance Officer
20 N Maple
P.O. Box 910
Watertown, South Dakota 57201

C. Opening of Bids

June 5, 2025 @ 2:00 P.M. (Central Time)
Bids will be publicly opened and read aloud

D. Bid Documents

1. Proposal (Pages 457-474)

- a. Acknowledgement of Addendum(s)
- b. Site examination of existing conditions
- c. Insert all Unit Prices and Total Prices as required (Unit Prices will control)
- d. Buy American Certificate
- e. Sign and Date the Proposal

- f. Bid Schedules
 - 1. Bid Schedule A – Civil
 - 2. Bid Schedule B – Electrical
 - 3. ****BIDDERS MUST BID ON BID SCHEDULE A AND BID SCHEDULE B****
- 2. Attachment to Proposal (Pages 475-478) – 3.0% DBE Goal, Sign and Date
 - a. DBE Manufacturers 100% Credit
 - b. DBE Suppliers 60% Credit
 - c. DBE Wholesalers only receive credit for mark-up
 - d. If the Contractor is not going to meet DBE Goal, he/she must show a “Good Faith Effort” (Documentation must be provided within 2 business days from the date that the apparent low bidder is contacted. This documentation must be approved prior to issuing of a Contract).
 - e. DBE Good Faith Effort Soliciting efforts must adhere to Special Conditions, SC-14, III.
- 3. Bid Security
 - a. 10% Bid Bond – Made out to the City of Watertown
 - b. 5% Cashier’s Check – Made out to the City of Watertown
- 4. Qualification of Bidders (General Provisions, Section 20-02)
 - a. Each bidder shall submit evidence of competency and evidence of financial responsibility to perform the work to the Owner at the time of bid opening.
 - b. Evidence of competency, unless otherwise specified, shall consist of statements covering the bidder’s past experience on similar work, and a list of equipment and a list of key personnel that would be available for the work.
 - c. Each bidder shall furnish the Owner satisfactory evidence of their financial responsibility. Evidence of financial responsibility, unless otherwise specified, shall consist of a confidential statement or report of the bidder’s financial resources and liabilities as of the last calendar year or the bidder’s last fiscal year. Such statements or reports shall be certified by a public accountant. At the time of submitting such financial statements or reports, the bidder shall further certify whether their financial responsibility is approximately the same as stated or reported by the public accountant. If the bidder’s financial responsibility has changed, the bidder shall qualify the public accountant’s statement or report to reflect the bidder’s true financial condition at the time such qualified statement or report is submitted to the Owner.

- d. Unless otherwise specified, a bidder may submit evidence that they are prequalified with the State Highway Division and are on the current “bidder’s list” of the state in which the proposed work is located. Evidence of State Highway Division prequalification may be submitted as evidence of financial responsibility in lieu of the certified statements or reports specified above.

****MAKE SURE ALL OF THE ABOVE MENTIONED FORMS ARE COMPLETELY FILLED OUT, SIGNED, AND DATED, PRIOR TO SUBMITTAL OF YOUR BID****

II. General Provisions

- A. Bonding, Insurance, Utility Contacts, Etc.

III. Specific Project Requirements

- A. Non-Discrimination in Contractor’s work force

1. Goals
 - a. Minority – 1.3%
 - b. Female – 6.9%

- B. Buy American

1. Helms and Associates may assist in submitting a Waiver to the FAA, if needed.

- C. Posters

1. EEO Posters – Available from SD-DOT (On Site)
2. Wage Rates (On Site)

- D. Payrolls

1. Need to be submitted weekly by the Prime Contractor and all Subcontractors performing work on-site.

- E. Reports to be Filed

1. Annual EEO-1 Report - Standard Form 100 must have been filed within past 12 months. Special Conditions page 24-25.
2. Construction Contractor Identification Data - Award Notification shall be given within 10 working days of Contract Award, see Special Conditions Pages 24-25.

- F. Storm Water Pollution Prevention Plan (SWPPP)

1. Contractor shall review the SWPPP included in the Plans.
2. Contractor will be required to keep a copy of the SWPPP on site during construction, comply with the requirements of it, and modify it as necessary to meet changing conditions.
3. Contractor will be issued and will sign the Contractor Certification Form after the Permit has been issued.
4. All costs associated with complying with the SWPPP shall be included in the Bid.

IV. Permits

- A. State/Local Permits must be obtained by the Contractor as required (i.e. Haul Road Permit).

V. Technical Specifications

- A. Items for all Bid Schedules are found in Part VI of the Construction Specifications and Contract Documents or in the Plans.
- B. All questions shall be directed to Helms & Associates (Civil) and DGR Engineering (Electrical).

Helms & Associates:
Michael A. Schmit, P.E.
(605) 225-1212

michaels@helmsengineering.com

DGR Engineering:
Brian Meyer, P.E.

(605) 339-4157

brian.meyer@dgr.com

- C. Helms & Associates will issue all Addendums.

VI. Miscellaneous

- A. Review of Bids and approval by the FAA will be prior to Award of the Contract. (Anticipate up to 60 days after the Bid Opening)
- B. A Pre-Construction Conference will be held prior to construction starting.

C. Construction Observation

- 1. Helms & Associates / DGR Engineering
- 2. SD-DOT / FAA – Intermittent and Final

D. Payments

- 1. Monthly
- 2. RETAINAGE – 10% (General Provisions, Section 90)
- 3. Stockpiled Materials
 - a. Cost documentation / Invoice
 - b. Certificate of Compliance or test results to show it meets the specification requirements
 - c. Proof of Insurance

E. Project Completion – Special Conditions (SC-6)

- 1. Construction Limitations – see Special Conditions Pages 21-22.

****Work shall not commence until 2026 with ALL existing airside facilities remaining open until at least April 1, 2026 unless written authorization from the Owner allows closure prior to April 1, 2026****

Bid Schedule A and Bid Schedule B

Phase I: Taxiway B, C, and E Construction (Outside Runway Obstacle Free Zones) shall be completed (minus final pavement marking and seeding) by August 15, 2026. Liquidated Damages set forth in section SC-1 of the Special Conditions may be assessed if this timeframe is not met.

Phase II: Taxiway C3 Construction (Within Runway 17/35 Runway Obstacle Free Zone) shall be completed (minus final pavement marking and seeding) in no more than 21 calendar days and shall also be completed by August 15, 2026. Liquidated Damages set forth in section SC-1 of the Special Conditions may be assessed if either of these timeframes are not met.

Phase III: Taxiways A/B and A/C Intersection Construction (Work within Taxiway A Object Free Area) shall be completed (minus final pavement marking and seeding) in no more than 21 calendar days and shall also be completed by August 15, 2026. Liquidated Damages set forth in section SC-1 of the Special Conditions may be assessed if either of these timeframes are not met.

Phase IV: Taxiway B/E Intersection Construction shall be completed (minus final pavement marking and seeding) in no more than 14 calendar days and shall also be completed by August 15, 2026. Liquidated Damages set forth in section SC-1 of the Special Conditions may be assessed if either of these timeframes are not met.

Phase V: Taxiway B Removals shall be completed (minus final pavement marking and seeding) in no more than 7 calendar days and shall also be completed by August 15, 2026. Liquidated Damages set forth in section SC-1 of the Special Conditions may be assessed if either of these timeframes are not met.

The work shall be completed in accordance with Paragraph 50-15 of the General Provisions by September 26, 2026.

VII. Construction Methods / Discussion

- A. Construction Meetings will be held throughout the project. All Contractors involved with work at the time of the meeting must attend. Frequency and time shall be coordinated at the Pre-Construction Conference.
- B. Bid quantities may be adjusted to stay within project funds.
- C. Contractor will be responsible for Aggregate Testing (Gradations). The Engineer will perform all density testing.
- D. FAA General Provisions / Technical Specification Changes **(make sure your read the specs as they have been updated)**:
 - 1. Mobilization shall be limited to 10 percent of the total project cost (Item C-105, page 107)
 - 2. Contractor Quality Control Program is now a pay item.
- E. Helms & Associates will perform all Control and Layout Staking.
- F. No Addenda will be issued later than Tuesday, June 3, 2025.
- G. Field Laboratory may be eliminated if not needed (see Plan Note).

H. Potential Addendum Items:

1. Note to clarify that Gate, Access Approach, and Culvert will be needed at the entrance off of Airport Drive. Once the Project is completed, the fence will have to be re-established and the area will have to be reclaimed. This will be incidental to the Construction Safety Phasing Plan Bid Item.
2. Note to clarify that during hauling operations, the Gate off of Airport Drive (Haul Route) may be open but the Contractor shall post a Gate Guard. When the Gate is not in use, it shall be closed and locked.
3. Runway Safety Area (RSA) label is missing on a couple of Plan Sheets.
4. Fractured Face requirements for the P-401 Specification.
5. Adjustments to some Electrical Specifications.
6. Signs will change eliminating some Bid Items. A new Bid Form will be provided.
7. Adjustment to the Asphalt Pavement Removal Bid Item for removal of the Asphalt at the Runway 17 End to allow for resetting of the Threshold Lights.
8. Addendum No. 1 will be issued prior to 5:00 p.m. on Wednesday, May 28, 2025.

PRE-BID CONFERENCE SIGN-IN SHEET

Project:	Watertown Taxiway Improvements	Meeting Date/Time:	May 22, 2025 @ 11:00 A.M.
Facilitator:	Helms and Associates	Place/Room:	Watertown Regional Airport Terminal Conference Room 550 Airport Dr. Watertown, South Dakota 57201 GoToMeeting

Name	Company	Phone	E-Mail
Michael Schmit	Helms & Associates	(605) 225-1212 Office (605) 216-5424 Cell	michaels@helmsengineering.com
David Feilmeier	DGR Engineering	(605) 660-3195	david.feilmeier@dgr.com
Ian Meriwether	City of Watertown	(605) 753-9357	imeriwether@watertownsd.us
Chaz Spellman	City of Watertown	(605) 290-5088	cspellman@watertownsd.us
Tim Davis	Midland Contracting	(605) 350-4667	tim@midlandcontractinginc.com
Lason McDaniels	Basin Construction	(605) 520-9772	lason@basintile.com
Jason Koistinen	Basin Construction	(605) 881-0087	jason@basintile.com
Faith Shoemaker	Webster Scale	(605) 590-9024	faithshoemaker@websterscale.com
Paul Fox	Engelstad Electric	(605) 886-5508	pfox@iw.net
Brandon Eframson	Eframson Electric	(605) 881-3092	brandon@efraimsonelectric.com
Colin Paulsen	J & J Earth Works	(605) 868-1922	colin.paulsen@outlook.com