

April 20, 2026

Re: Revenue Producing Hangar
Winner Regional Airport
Winner, South Dakota
AIP #3-46-0061-023/024-2026
Helms #A-9857

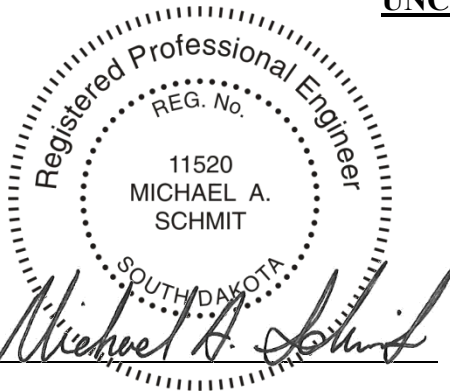
Bid Opening: **April 22, 2026**
2:00 pm Local Time

ADDENDUM NUMBER 2

The following modifications are made to the plans and specifications for the Revenue Producing Hangar Project, Winner Regional Airport:

SEE ATTACHED MECHANICAL/ELECTRICAL ADDENDUM

ALL OTHER ITEMS OF THE PLANS AND SPECIFICATIONS REMAIN UNCHANGED



BY: _____

PROJECT ENGINEER – HELMS & ASSOCIATES

Acknowledge receipt of the Addendum by inserting its number on the Bid Form. Failure to do so may subject bidder to disqualification. This Addendum forms a part of the Contract Documents. It modifies them as above.

Addendum No. ME-1
To Mechanical & Electrical Plans and Specifications:
Winner Airport Revenue Producing Hangar
Winner, South Dakota

Addendum Dated: April 20, 2026

Original Plans & Specifications Dated: April 3, 2026

SCOPE OF THIS ADDENDUM: The following becomes part of the original plans and specifications, taking precedence over the items that may conflict. The bidder shall note receipt and make acknowledgement of the addendum on the bid form, incorporating its provision in the bid.

PLAN AND SPECIFICATION CHANGES AND CLARIFICATIONS:

1. M2 – Heating Plan
 - a. Added Keynote 8.
 - b. Added snow/ice sensor to plans.
 - c. In Keynote 7, changed depth of tubing below door track 1st pour surface to 1", referenced Hangar Door Ice Melt Tubing Detail.
 - d. Added Hangar Door Ice Melt Tubing Detail.

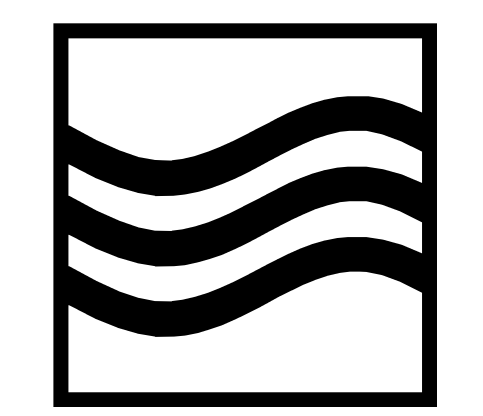
APPROVED EQUALS:

The following list of equipment manufacturers shall be added to the approved equals listed on the plan sheet schedules and considered as approved equals subject to meeting all requirements of the plans and specifications – final acceptance subject to shop drawing approval.

1. Hydronic Buffer Tank: Zilmet
2. Infloor Heat Tubing: Comfort Pro

Element Consulting Engineers
(605) 225-4344

Attachments: Sheet M2 – Heating Plan



ELEMENT CONSULTING ENGINEERS

221 6th Ave SE Suite #3 Aberdeen, SD 57401 Phone: 605-225-4344

PROPANE GAS BOILER SCHEDULE

Table with columns: EQUIP. NO., MANUFACTURER & MODEL, LOCATION, MEDIA, BOILER RELIEF (PSI), FUEL, GAS RATE (MBH), OUTPUT RATINGS (MBH, HP), AFUE %, MOTOR (V./PH./CY., FLA), SHIPPING WEIGHT (LBS), NOTES. Includes two boiler entries and a list of notes.

PUMP SCHEDULE

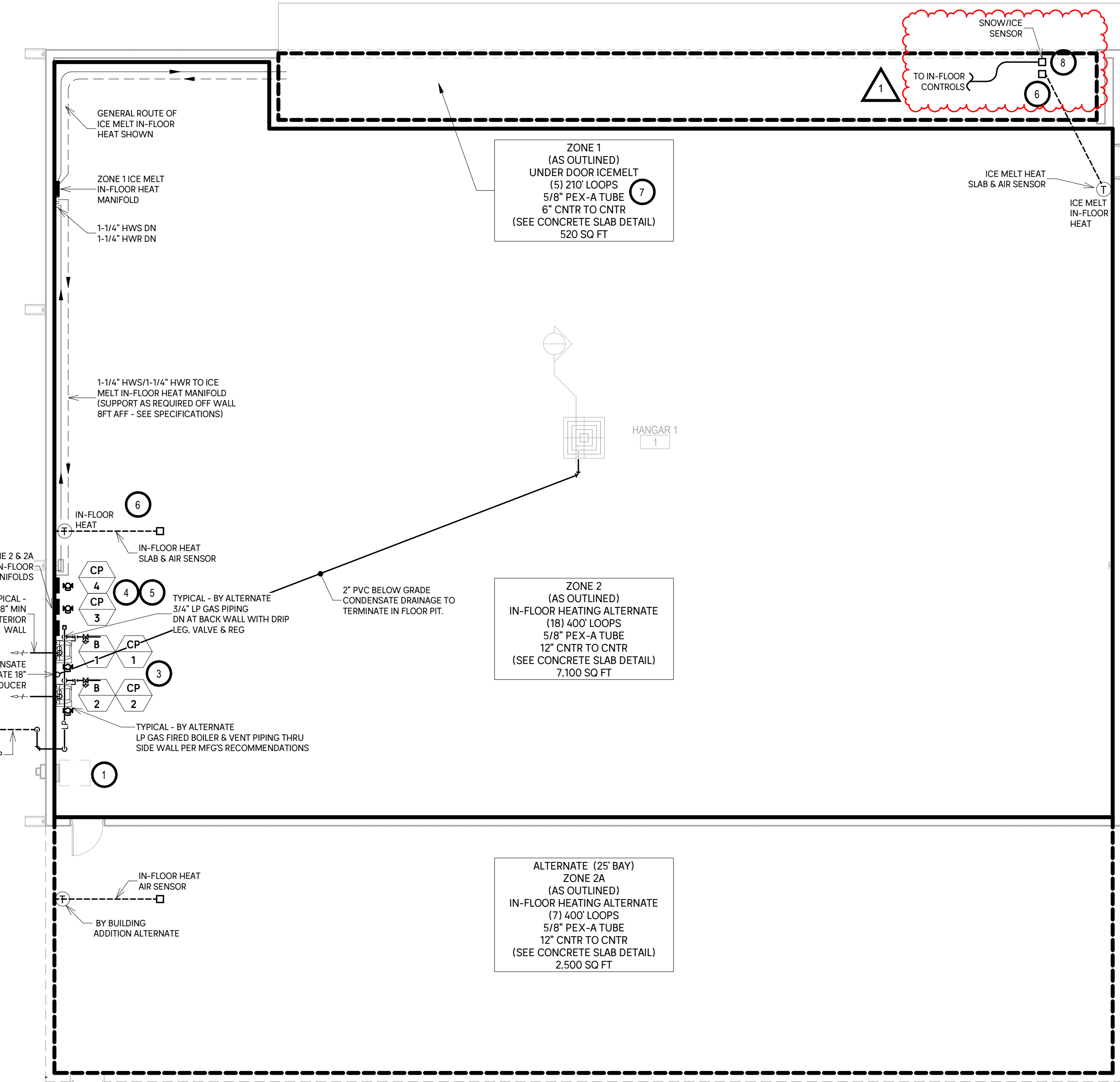
Table with columns: EQUIP. NO., MANUFACTURER & MODEL, SERVING, LOCATION, GPM, HEAD, TYPE, ELECTRICAL (HP/W, RPM, V./PH./CY., FLA), NOTES. Includes four pump entries and a list of notes.

EXPANSION TANK SCHEDULE

Table with columns: EQUIP. NO., MANUFACTURER & MODEL, SERVING, CALCULATED SYSTEM VOLUME (GAL), SIZED VOLUME WITH SAFETY FACTOR (GAL), TEMP RANGE (°F), PRESSURE RANGE (PSIG), MIN TANK VOLUME (GAL), MIN ACCEPTANCE VOLUME (GAL), NOTES. Includes one expansion tank entry and a list of notes.

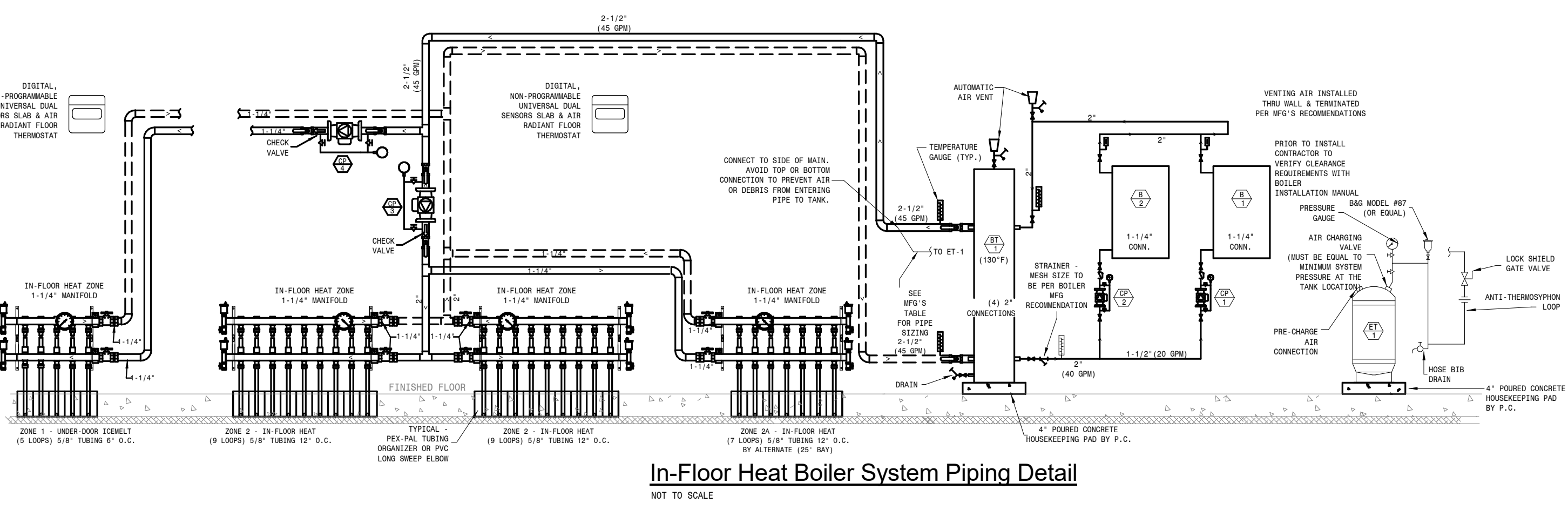
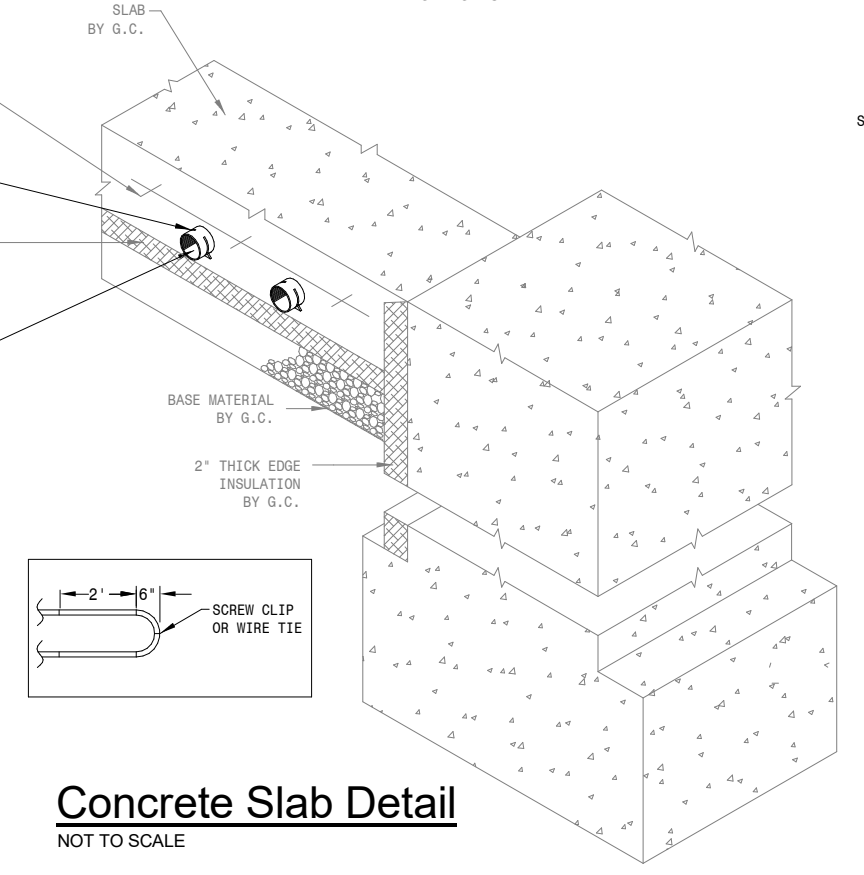
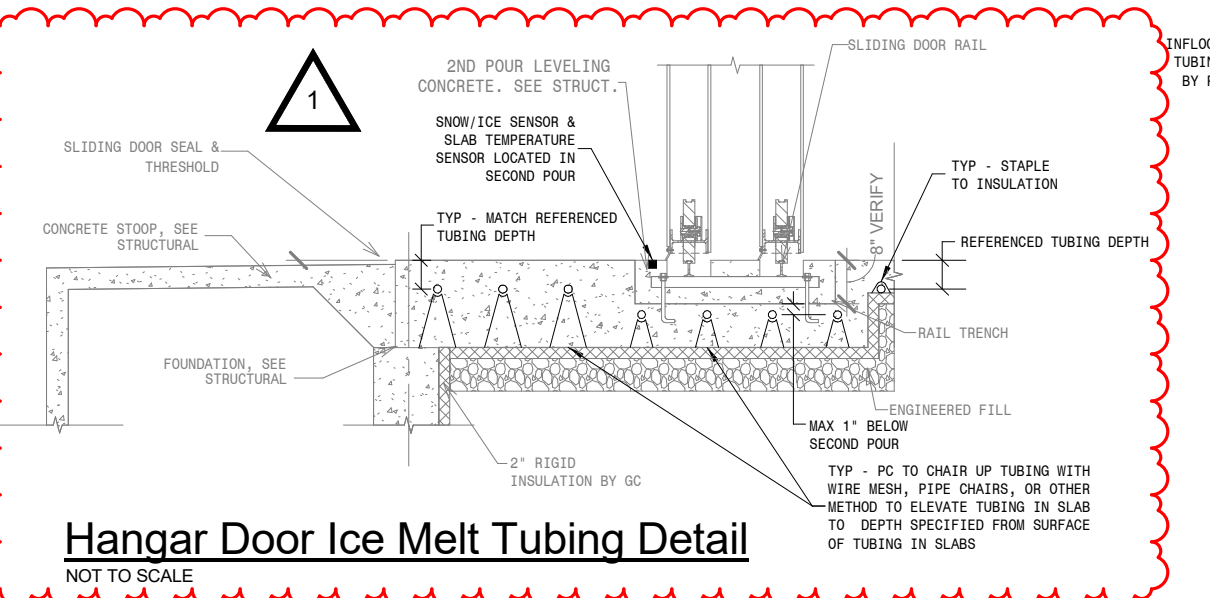
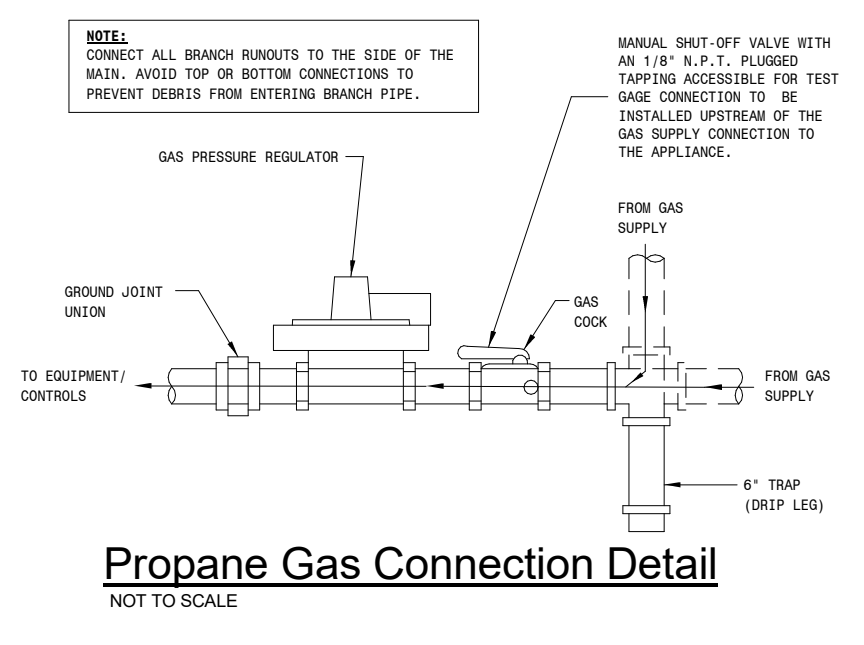
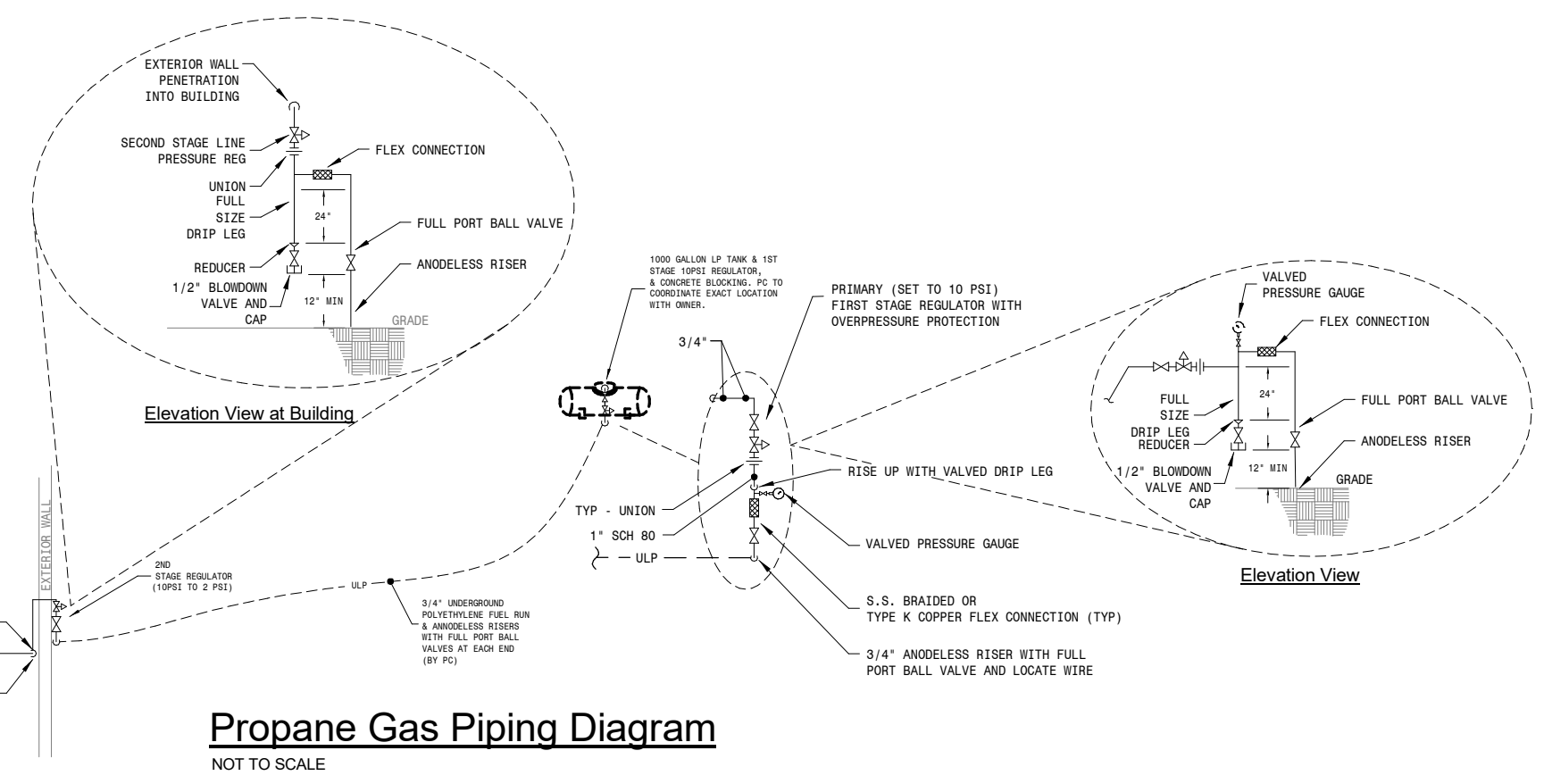
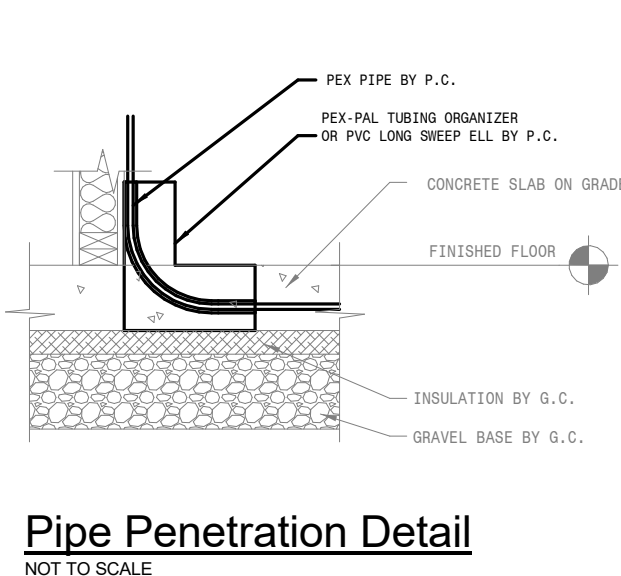
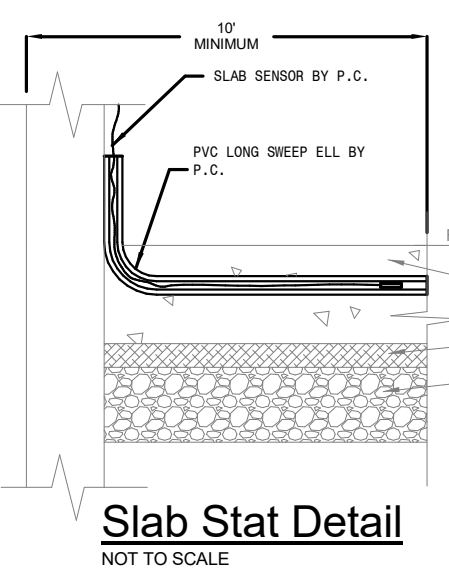
HEATING BUFFER TANK SCHEDULE

Table with columns: EQUIP. NO., MANUFACTURER & MODEL, SERVING, LOCATION, STORAGE CAPACITY, PIPING CONNECTIONS, DIMENSIONS (HEIGHT, DIAMETER), NOTES. Includes one heating buffer tank entry and a list of notes.

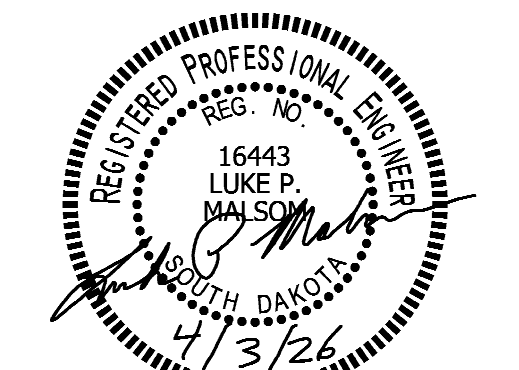


HEATING PLAN 1/8" = 1'-0" @ 24 X 36 1/16" = 1'-0" @ 11 X 17

- KEYNOTES: 1. THIS SPACE IS RESERVED FOR ELECTRICAL GEAR... 2. SEE PROPANE GAS PIPING DIAGRAM... 3. SEE IN-FLOOR HEAT BOILER SYSTEM PIPING DETAIL... 4. IN-FLOOR HEAT MANIFOLDS WITH ISOLATION VALVE... 5. SEE CONCRETE SLAB DETAIL... 6. SEE PIPE PENETRATION & SLAB STAT DETAIL... 7. SEE HANGAR DOOR ICE MELT TUBING DETAIL... 8. PROVIDE & INSTALL SNOW/ICE SENSOR...



ECE PROJECT NO: 25007



ISSUE: 4-3-26 CONSTRUCTION DOCUMENTS REVISION SCHEDULE: REV. # 1 REV. DSC. ADDENDUM ME1 REV. DATE 4/20/26

PROJECT: Winner Airport Revenue Producing Hangar Winner, South Dakota

SHEET TITLE: HEATING PLAN

M2